



AITMAN DRIVE, TW8

£450,000

Two bedroom
Two bathroom
Residents gym
Gated allocated parking
Long lease
Energy rating: d

@marshandparsons
marshandparsons.co.uk

MARSH &
PARSONS



ABOUT THE PROPERTY

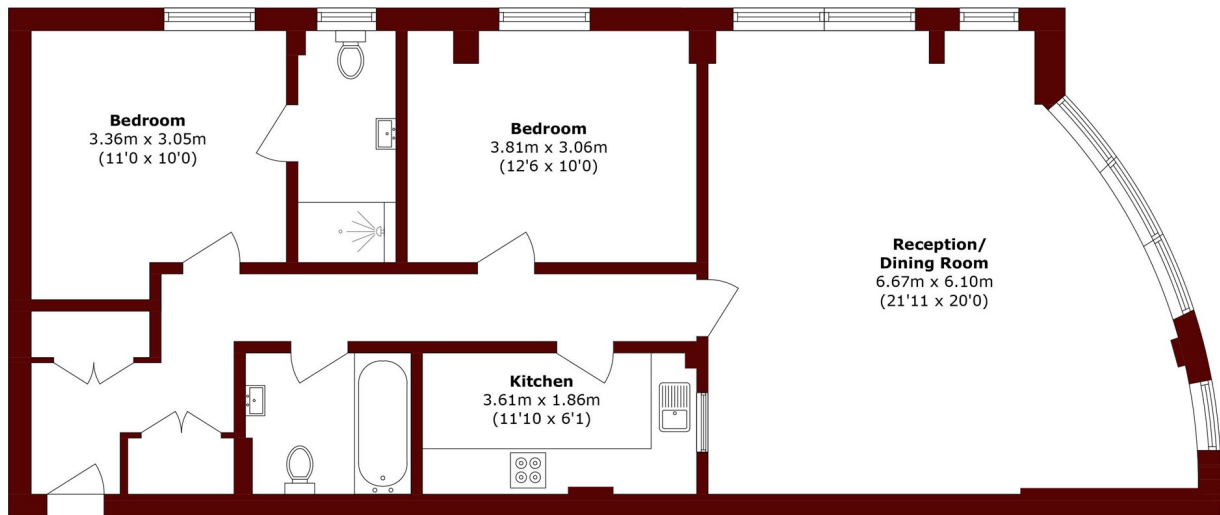
Situated in this gated development this immaculately presented two bedroom, two bathroom apartment comes with allocated parking, a residents' gym, a long lease and lift access.

Rivers House is located moments from Kew Bridge, the River Thames and only 0.9 miles from the Royal Botanic Gardens, Kew. Local amenities include Chiswick High Road and Brentford High Street, which offer many shops, restaurants, cafes, bars and pubs.

Transport links include Kew Bridge station (Southwest Rail) and Gunnersbury tube station (District & Overground lines).



STEP INSIDE AITMAN DRIVE



Total area (approx.): 88.5 sq. m (952.6 sq. ft)

Chiswick
020 8994 2556

Energy Rating: D We aim to make our particulars both accurate and reliable. However, they are not guaranteed; nor do they form part of an offer or contract. If you require clarification on any points then please contact us, especially if you're traveling some distance to view. Please note that appliances and heating systems have not been tested and therefore no warranties can be given as to their good working order

MARSH &
PARSONS