

QUEENS ROAD, WALTHAMSTOW

£3,600 Per Calendar Month
 3 Bed House



Features:

- Available August
- Three Bedrooms
- End of Terrace House
- Stylish Interior
- Library
- Eat in Kitchen/Diner
- Persian Garden
- Off Street Parking
- Ideal Family Home

Available this August, a beautifully presented three-bedroom end-of-terrace home offering style, space and character in equal measure. The interior features a generous eat-in diner and a dedicated library, perfect for both everyday living and quieter moments. Each room has been thoughtfully finished to create a harmonious flow throughout. Outside, a Persian-inspired garden creates a unique sense of calm, ideal for relaxing or entertaining, while off-street parking adds everyday ease. With its distinctive design, well-balanced layout and rare blend of comfort and convenience, this property stands out as an exceptional rental opportunity.

REQUEST A VIEWING
 0203 397 9797

E11, E7, E12 & E15
 hello11@stowbrothers.com
 0203 397 2222

E4 & N17
 hello4@stowbrothers.com
 0203 369 6444

E17 & E10
 hello17@stowbrothers.com
 0203 397 9797

E18 & IG8
 hello18@stowbrothers.com
 0203 369 1818

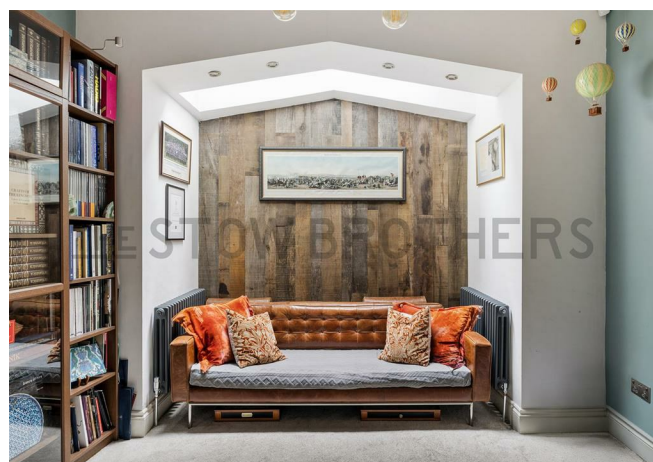
E8, E9, E5, N16, E3 & E2
 hellohackney@stowbrothers.com
 0208 520 3077

New Homes
 newhomes@stowbrothers.com
 0203 325 7227

Investment & Development
 id@stowbrothers.com
 0208 520 6220

Property Maintenance
 propertymanagement@stowbrothers.com
 0203 325 7228

STOWBROTHERS.COM
 @STOWBROTHERS



IF YOU LIVED HERE...

Set across two thoughtfully arranged floors, this charming home blends characterful features with modern comfort. A welcoming entrance hall leads to two distinct reception rooms, a ground floor WC, and the impressive rear kitchen/diner.

The front reception is warm and inviting, bathed in daylight from a classic bay window, with decorative coving, rich wooden flooring and a handsome fireplace forming a timeless setting for relaxing or entertaining. The second reception room offers an equally appealing alternative, softened by plush carpet and enriched by a striking wood-panelled wall.

To the rear, the kitchen and dining area stretches the full width of the property, seamlessly connecting to the garden through expansive glazed doors. A central island provides both function and focus, framed by elegant cabinetry,

herringbone flooring and mirrored tiling. Twin skylights and a bay window seat draw in natural light, while the layout lends itself effortlessly to sociable mealtimes or quiet mornings.

Outside, the garden unfolds into a serene and leafy escape. Mature planting, curved herringbone pathways and terracotta pots create a layered, tranquil atmosphere. A marble water feature sits at the heart, with paved areas perfect for entertaining. A greenhouse, secluded bench, and gated driveway offering off-street parking complete this private outdoor haven.

Upstairs, three bedrooms span the first floor. The main room is light and airy, with twin windows and soft carpet. The second is bright and well-sized, while the third is calm and uncluttered, finished in neutral tones with excellent light. The bathroom is beautifully finished—elegantly tiled, well-proportioned and bathed in daylight. A freestanding tub sits beneath the window, while a walk-in shower adds both practicality and polish.



WHAT ELSE?

This neighbourhood blends historic charm with modern cultural flair. Cobble lanes and period buildings sit easily alongside vibrant local hubs. Just a short stroll away, Walthamstow Village offers a mix of independent shops, The Village Pub, and the popular Eat17 restaurant. CRATE St James Street adds a lively buzz with food vendors and creative workspaces, while God's Own Junkyard dazzles with neon art and vintage curiosities. The newly opened Soho Theatre brings comedy and performance to an intimate setting, and St James Park offers a peaceful green escape. Families will appreciate the excellent local schools, including Barclay and South Grove Primary, both rated Outstanding and within easy reach.

Getting around is effortless, with Walthamstow Central Station just around a 10-minute walk away, connecting you swiftly to the Victoria Line and Overground services. Even closer, Walthamstow Queens Road is under 5 minutes on foot, offering additional Overground links.

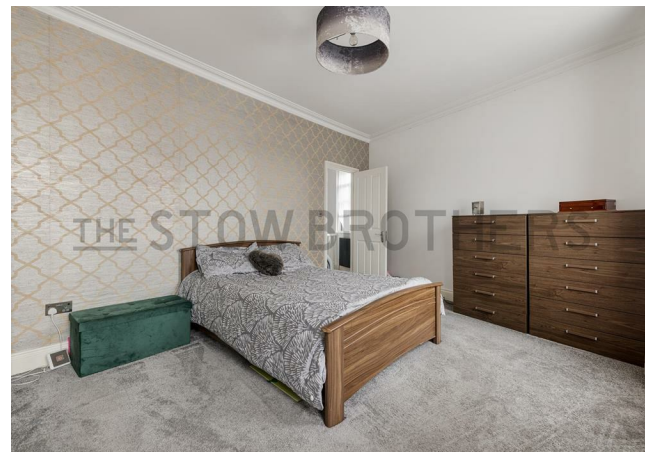
REQUEST A VIEWING
0203 397 9797

FOLLOW US → @STOWBROTHERS
STOWBROTHERS.COM



REQUEST A VIEWING
0203 397 9797

FOLLOW US → @STOWBROTHERS
STOWBROTHERS.COM



Reception

15'5" x 13'10"

Library

11'6" x 14'6"

Kitchen/Diner

19'1" x 24'4"

Bedroom

15'8" x 11'11"

Bedroom

11'8" x 10'11"

Bedroom

9'8" x 10'10"

Bathroom

5'6" x 10'11"



REQUEST A VIEWING
0203 397 9797

FOLLOW US → @STOWBROTHERS
STOWBROTHERS.COM