



Woodland Gardens, Muswell Hill, N10

Share of Freehold

£1,150,000



44 Highgate High Street, Highgate Village, London, N6 5HX

020 8348 8000

highgate@litchfields.com

www.litchfields.com

Offices also in Hampstead Garden Suburb



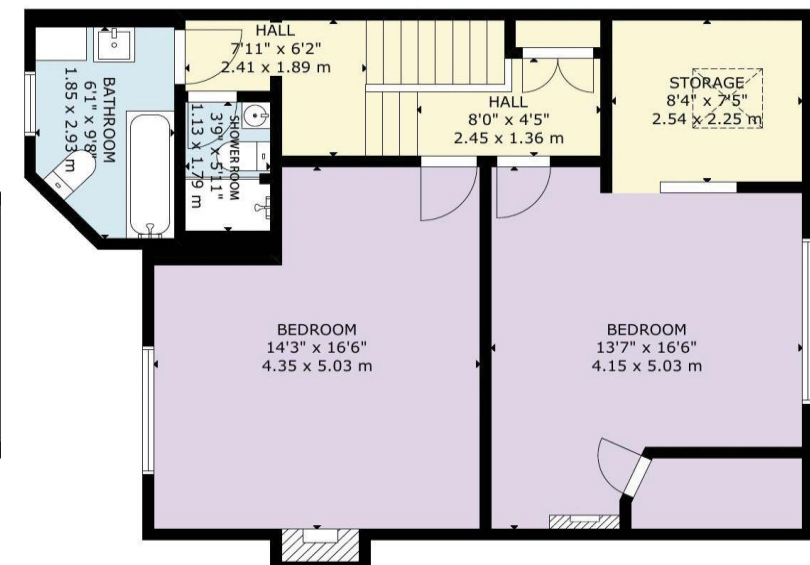
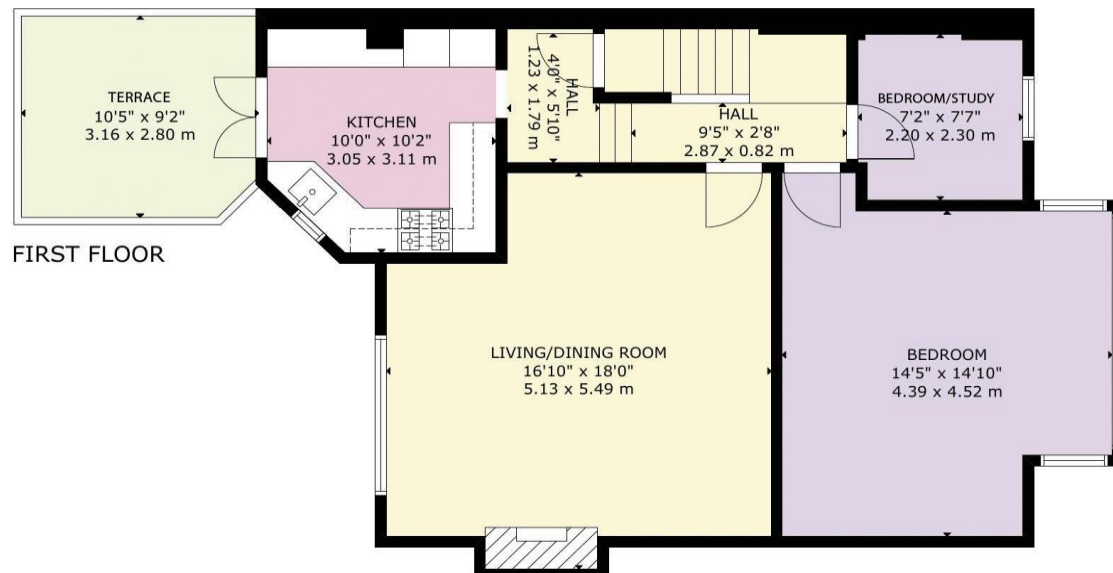
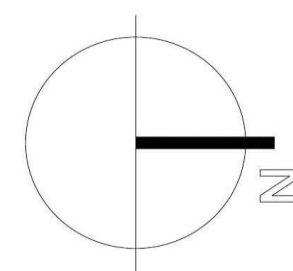
We are pleased to offer this very spacious four-bedroom duplex apartment arranged over the top two top floors of an elegant period conversion. This lovely flat is flooded with natural light and offers far-reaching views from the upper floors. The accommodation comprises a generous reception room, perfect for entertaining, featuring large windows with leafy views. The kitchen leads directly onto a secluded private terrace, an ideal sun trap for alfresco dining. There are four well-proportioned bedrooms, including three doubles and one further single bedroom/study, providing versatile space for families or those working from home. The property also benefits from both a family bathroom and an additional, separate shower room. There is easy on-street parking outside the house. Muswell Hill is one of North London's most sought-after "villages," known for its Edwardian architecture and vibrant community feel. The Broadway, a short walk away, provides you with a wide array of independent boutiques, cafes, supermarkets, and restaurants. Highgate and Queen's Woods are nearby, as well as the iconic Alexandra





- Chain Free character duplex conversion with panoramic views
- Spacious, sunny reception room
- 4 bedrooms
- kitchen
- Family bathroom
- Separate shower room
- Terrace
- Great views from upper floors
- EPC-D
- Corner property with easy parking





GROSS INTERNAL AREA
 TOTAL: 135 m²/1,445 sq ft
 FIRST FLOOR: 69 m²/738 sq ft, SECOND FLOOR: 66 m²/707 sq ft
 EXCLUDED AREAS: BALCONY: 9 m²/93 sq ft
 SIZE AND DIMENSIONS ARE APPROXIMATE, ACTUAL MAY VARY



44 Highgate High Street, Highgate Village, London, N6 5HX

020 8348 8000

highgate@litchfields.com

www.litchfields.com