



## Birnam Road, N4

£475,000

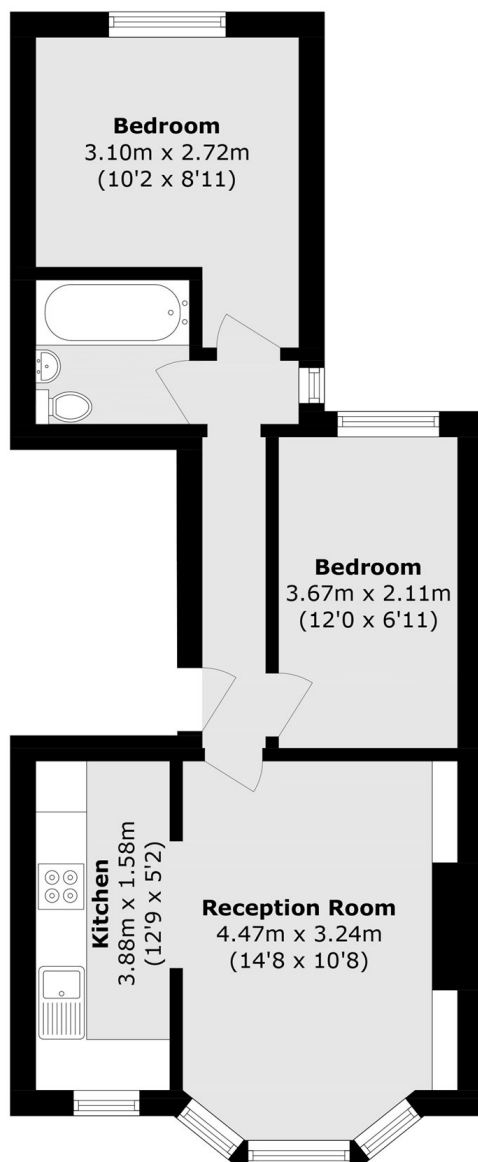
A very well presented two bedroom period conversion set on the first floor of a Victorian terraced house. This property offers a modern fitted kitchen, a reception room with a bay window, sash windows and high ceilings.

Birnam Road is a quiet tree-lined turning in the popular Tollington Park area, offering easy access to Finsbury Park station as well as a great selection of shops, bars, restaurants, and cafés that the area has to offer.

### Features

- Two Bedroom
- First Floor
- Share of Freehold
- Chain Free
- Great Transport Links
- Quiet Road

# Birnam Road, London, N4



Total area (approx.): 46.2 sq. m (497.2 sq. ft)