



Pear Tree Drive, Birmingham B43 6HS

welcome to

Pear Tree Drive, Birmingham

5 BEDROOM DETACHED RESIDENCESOUGHT AFTER LOCATION IN PEAR TREE DRIVE***NEAR TO LOCAL SCHOOLS, AMENITIES AND TRANSPORT LINKS***THREE RECEPTION ROOMS***SAUNA AND SHOWER***ENSUITE TO MASTER BEDROOM***DOWNSTAIRS CLOAK AND UTILITY ROOM***DETACHED DOUBLE GARAGE***NO UPWARD CHAIN***

Agent Note

Council Tax Band is E.

Cloakroom

Double glazed frosted window, wc, sink and central heating radiator.

Lounge

Double glazed bay window, feature fireplace and central heating radiator.

Dining Room

Open with front room.

Reception Room

Sitting room with sliding double glazed doors to rear.

Kitchen

Double glazed window, double glazed door to side access, wall and base units, BBQ, grill, oven x 3 and microwave oven, dishwasher and extractor fans x 2.

Utility Room

Double glazed window, plumbing for washing machine and central heating radiator.

Conservatory

Double glazed windows, sauna and shower and central heating radiator.

Bedroom One

Big double room, double glazed window, fitted wardrobe and central heating radiator.

En Suite

Shower, bath, heated towel rail, sink and storage. WC separate.

Bedroom Two

Above the Conservatory, good amount of storage and Vulex windows.

Bedroom Three

Large double room, double glazed window, fitted wardrobes and central heating radiator.

Bedroom Four

Large double room, double glazed window, fitted wardrobes and central heating radiator.

Bathroom

Double glazed frosted window, corner shower, spa bath, wc, sink and storage and heated towel rail.

Bedroom Five

Double glazed window, large storage/potential for en-suite and central heating radiator.

Rear Garden

Double garage and driveway access in.

Outbuilding

Double garage off Conservatory.





view this property online shipways.co.uk/Property/GRB112481



welcome to

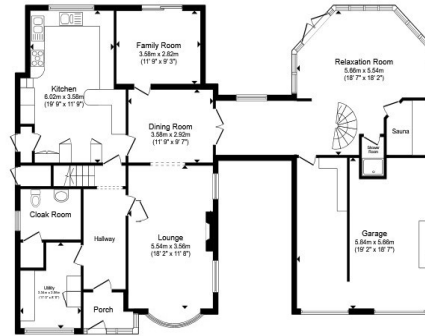
Pear Tree Drive, Birmingham

- Substantial 5 Bedroom Detached Residence
- Sought After Location in Pear Tree Drive
- Three Reception Rooms
- Sauna and Shower Downstairs
- Cloak and Utility Room

Tenure: Freehold EPC Rating: D
Council Tax Band: E

offers in the region of

£725,000



Ground Floor



First Floor



Second Floor

Total floor area 299.8 m² (3,227 sq.ft.) approx

This floor plan is for illustrative purposes only. It is not drawn to scale. Any measurements, floor areas (including any total floor area), openings and orientation are approximate. No details are guaranteed, they cannot be relied upon for any purpose and they do not form part of any agreement. No liability is taken for any error, omission or misstatement. A party must rely upon its own inspection(s). Powered by www.propertybox.io



view this property online shipways.co.uk/Property/GRB112481



Property Ref:
GRB112481 - 0006

1. MONEY LAUNDERING REGULATIONS Intending purchasers will be asked to produce identification documentation at a later stage and we would ask for your co-operation in order that there is no delay in agreeing the sale. 2. These particulars do not constitute part or all of an offer or contract. 3. The measurements indicated are supplied for guidance only and as such must be considered incorrect. Potential buyers are advised to recheck measurements before committing to any expense. 4. We have not tested any apparatus, equipment, fixtures or services and it is in the buyers interest to check the working condition of any appliances. 5. Where an EPC, or a Home Report (Scotland only) is held for this property, it is available for inspection at the branch by appointment. If you require a printed version of a Home Report, you will need to pay a reasonable production charge reflecting printing and other costs. 6. We are not able to offer an opinion either written or verbal on the content of these reports and this must be obtained from your legal representative. 7. Whilst we take care in preparing these reports, a buyer should ensure that his/her legal representative confirms as soon as possible all matters relating to title including the extent and boundaries of the property and other important matters before exchange of contracts.



0121 358 2281



greatbarr@shipways.co.uk



905 Walsall Road, Great Barr, BIRMINGHAM,
West Midlands, B42 1TN



shipways.co.uk