



Asking Price £525,000
Summit Avenue, Kingsbury



 3

Bedrooms

 1

Bathroom

211 Edgware Rd, London, NW9 6LP |
colindale@warrenbradleystates.co.uk

020 8200 7007

Asking Price £525,000
Summit Avenue, Kingsbury

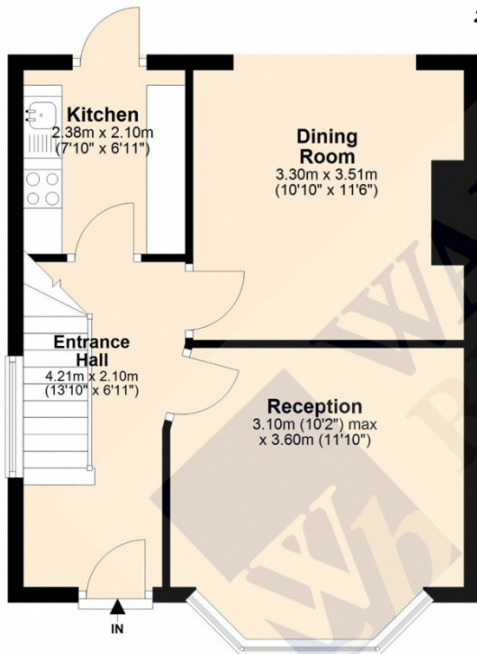


Warren Bradley Estates are delighted to offer for sale this spacious three bedroom terraced house which benefits from two reception rooms, a fitted kitchen, main bathroom, Sep WC, three large bedrooms, gas central heating, double glazing, off street parking and a well maintained rear garden.

In need of modernisation the property is offered solely by us and is on a chain free basis.

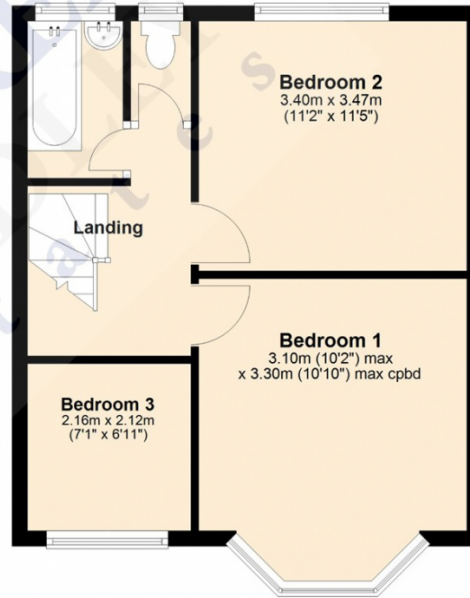
Ground Floor

Approx. 38.1 sq. metres (409.8 sq. feet)



First Floor

Approx. 37.4 sq. metres (402.5 sq. feet)



Total area: approx. 75.5 sq. metres (812.3 sq. feet)

Energy Efficiency Rating		
	Current	Potential
Very energy efficient - lower running costs		
(92+)	A	
(81-91)	B	85
(69-80)	C	70
(55-68)	D	
(39-54)	E	
(21-38)	F	
(1-20)	G	
Not energy efficient - higher running costs		
England, Scotland & Wales		EU Directive 2002/91/EC

Address: London, NW9

