

**Location:**

Located in the heart of West London, Acton is a vibrant and diverse community with excellent transport links into Central London. Bursting with charm, amenities, and green spaces, it's a popular area for young professionals and families alike. Just a 10-minute walk from ARTSCENE. Churchfield Road is

**Key points:**

- 10 year ICW warranty
- Avande Select smart living technology
- Multi zone underfloor heating
- MVHR ventilation to all units
- Low carbon electric boilers
- Fitted joinery
- 1 Bedroom with private terrace
- Luxury new development

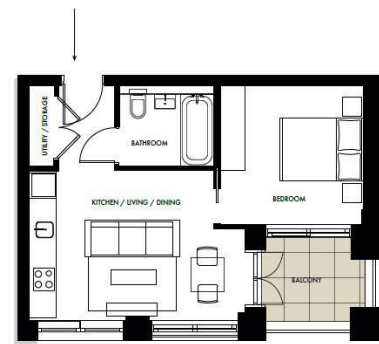
**Do Better:**

**Acton**  
sales@astonrowe.co.uk

57-59 Churchfield Road,  
Acton, London, W3 6AY

020 8992 3600

**Aston Rowe**



**APARTMENT 29**

1 BEDROOM APARTMENT

TOTAL INTERNAL AREA SQM/SQFT  
40.9 sqm / 440.1 sqft

KITCHEN / LIVING / DINING 19.9 sqm	BEDROOM 11.6 sqm	BATHROOM 4.1 sqm
UTILITY / STORAGE 1.1 sqm	BALCONY 4.4 sqm	

COLOUR SCHEME:  
■ Kitchen - Sage  
■ Bathroom 1 - Cream



**£375,000**

**East Acton Lane, London W3 7EY**

Energy Efficiency Rating		Environmental Impact (CO <sub>2</sub> ) Rating	
Current	Potential	Current	Potential

- 1 Reception Rooms
- 1 Bedrooms
- 1 Bathrooms

## The current owner says:

Welcome to ARTSCENE, a stunning modern development of one, two, and three-bedroom apartments in Acton.

Artscene offers a refined living experience in the heart of West London, crafted by Luxgrove Homes and thoughtfully curated by leading design studio Ademchic. This boutique development redefines modern elegance, with each apartment uniquely designed to blend sophisticated style with everyday comfort.

Step inside and you'll find a seamless transition from Artscene's contemporary façade to its beautifully appointed interiors. Light oak engineered flooring creates a sense of warmth and continuity, while crisp white shaker-style doors add a classic finish. The open-plan living spaces are accentuated by recessed ceiling lighting, giving each room a calm, ambient glow—ideal for entertaining or unwinding.

The kitchens feature streamlined cabinetry in soft neutral tones, complemented by premium Neff appliances, integrated lighting, and eye-catching worktops. These are kitchens designed for both function and flair.

Bathrooms are spa-inspired sanctuaries, finished with sleek, full-height tiling in modern, slimline tiles, Lusso stone basins, circular backlit mirrors, and brushed brass fixtures add texture and understated luxury to these tranquil spaces.

Set in the dynamic and well-connected neighbourhood of Acton, Artscene

## What's better:

