



## Sloane Avenue, SW3

### £350,000

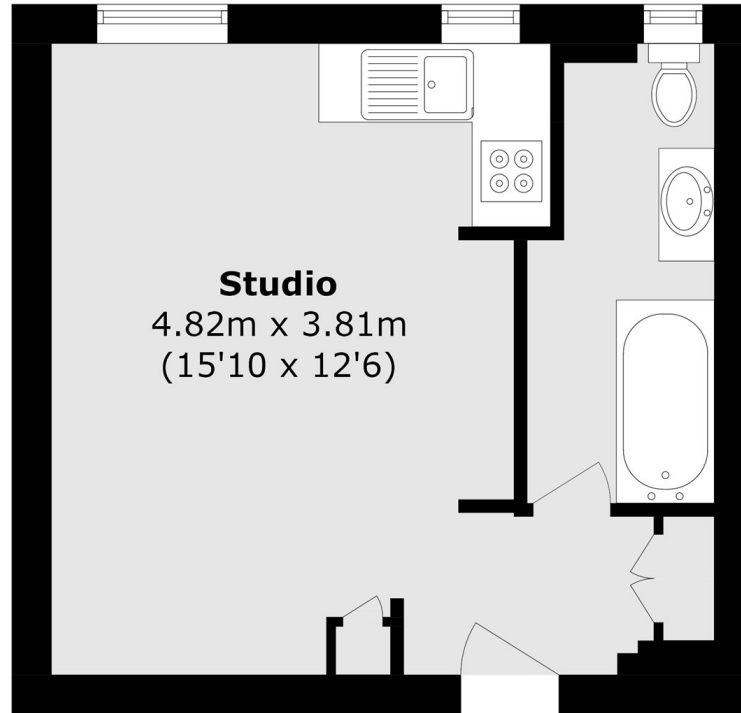
A studio apartment located on the eighth floor within a portered building. This property has proven to be a great London base and rental investment for the current owners.

Sloane Avenue Mansions is an attractive Art-Deco block positioned moments from Sloane Square. Pavilion Road, Chelsea Green and Duke of York Square are all within walking distance.

### Features

- Share of Freehold
- Studio Apartment
- Porter
- Lift
- Popular Location
- Excellent Rental Investment

**Sloane Avenue,  
London, SW3**



## **Eighth Floor**

Total Area (approx.): 24.3 sq. m (261.5 sq. ft)