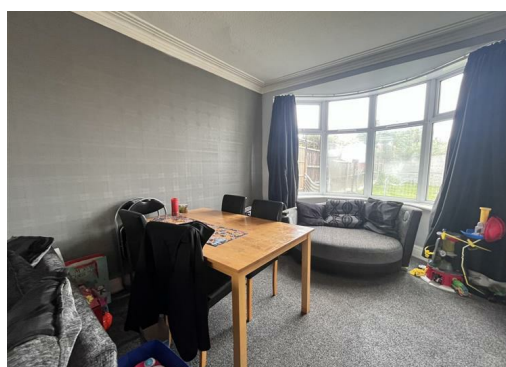




**Norcliffe Road, Bispham, FY2 9AL**

**£169,995**

**ATTENTION FIRST TIME BUYERS & INVESTORS!!!** We are delighted to be able to present to you this well presented and maintained 3 bedroom semi-detached house, situated in Bispham!



# 57 Norcliffe Road, Bispham, FY2 9AL

Property Perspective are delighted to be able to present to you this well presented and maintained 3 bedroom semi-detached house, situated in Bispham. Benefiting from a spacious corner plot position, modern kitchen and gas central heating.

The living accommodation briefly comprises of; open plan lounge/diner and kitchen to the ground floor and 3 bedrooms with bathroom to the first floor.

The property is located within a sought-after catchment area for local schooling at both Primary and Secondary levels, with schools boasting a 'GOOD to OUTSTANDING' OFSTED ratings. The area is also ideally located for local amenities/shops and travel links.

FREEHOLD  
Council tax band - B

## GROUND FLOOR

### Lounge/diner 23'8" x 11'4" (7.23m x 3.47m)

Carpet flooring with bay fronted window, gas fireplace (capped off) and curtains

### Kitchen 17'7" x 6'5" (5.37m x 1.97m)

Tile flooring with patio doors leading to the rear garden and spotlighting. A range of fitted kitchen units, worktops and integrated kitchen appliances, including oven, hob, hood, fridge and freezer

## FIRST FLOOR

### Bedroom 13'8" x 11'5" (4.18m x 3.48m)

Carpet flooring with bay fronted window and curtains

### Bedroom 10'3" x 13'10" (3.13m x 4.24m)

Carpet flooring with bay window to the rear elevation and curtains

### Bedroom 6'4" x 7'1" (1.94m x 2.16m)

Carpet flooring with window to the front elevation and blind

### Bathroom

High quality vinyl flooring with 3 piece bathroom suite in white, shower over bath with glass splash-back screen, spotlighting and radiator

### EXTERNAL

Spacious well presented gardens to the front and rear of the property, with the plot benefiting from a large corner position. Large driveway, capable of accommodating 2 vehicles.





