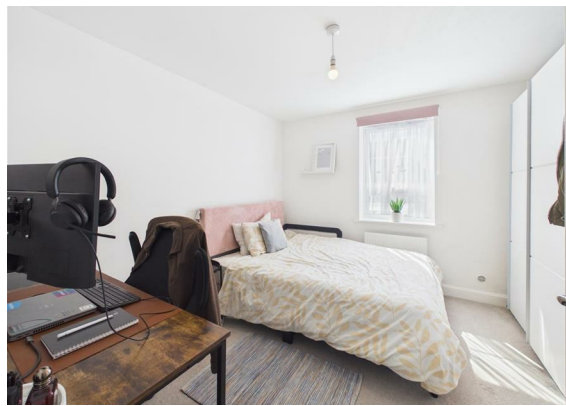


Flat 3, Skylark Avenue, Peacehaven, BN10 8GF
Asking Price £275,000



Flat 3, Skylark Avenue, Peacehaven, BN10 8GF

Asking Price £275,000

Council Tax Band: B

If you are looking for a property that is in 'Move in Condition' then look no further as your search will end here. This home is both immaculate in its presentation and generous in size which makes it the perfect first purchase or investment.

On entering the communal hall you will see that the common ways are very well maintained, this is a sign of a well run block. The private front door opens into a large entrance hall, here you will find all important built in storage cupboards. The living/dining/kitchen is a lovely light and bright room. The living/dining area is generous and will easily accommodate all of your soft furnishings alongside a table and chairs too.

The sleek kitchen has an abundance of modern matching units which are perfect for storage, these are complimented by numerous work surfaces for food preparation and integrated appliances too, which includes a fridge freezer and dishwasher. Two DOUBLE bedrooms are featured. Bedroom one is a excellent size and boasts its own en suite shower room/wc. Bedroom two is equally impressive in size and is complimented by the family modern bathroom/wc.

Moving outside you will find well kept communal gardens and a bike store. Lastly, parking will be of no concern as there are two private parking spaces directly next to the apartment.

Living/Dining/Kitchen

22'9 x 11'4 (6.93m x 3.45m)

Bedroom One

10'10 x 10'4 (3.30m x 3.15m)

Ensuite Shower Room

7' x 4'8 (2.13m x 1.42m)

Bedroom Two

10'3 x 8'8 (3.12m x 2.64m)

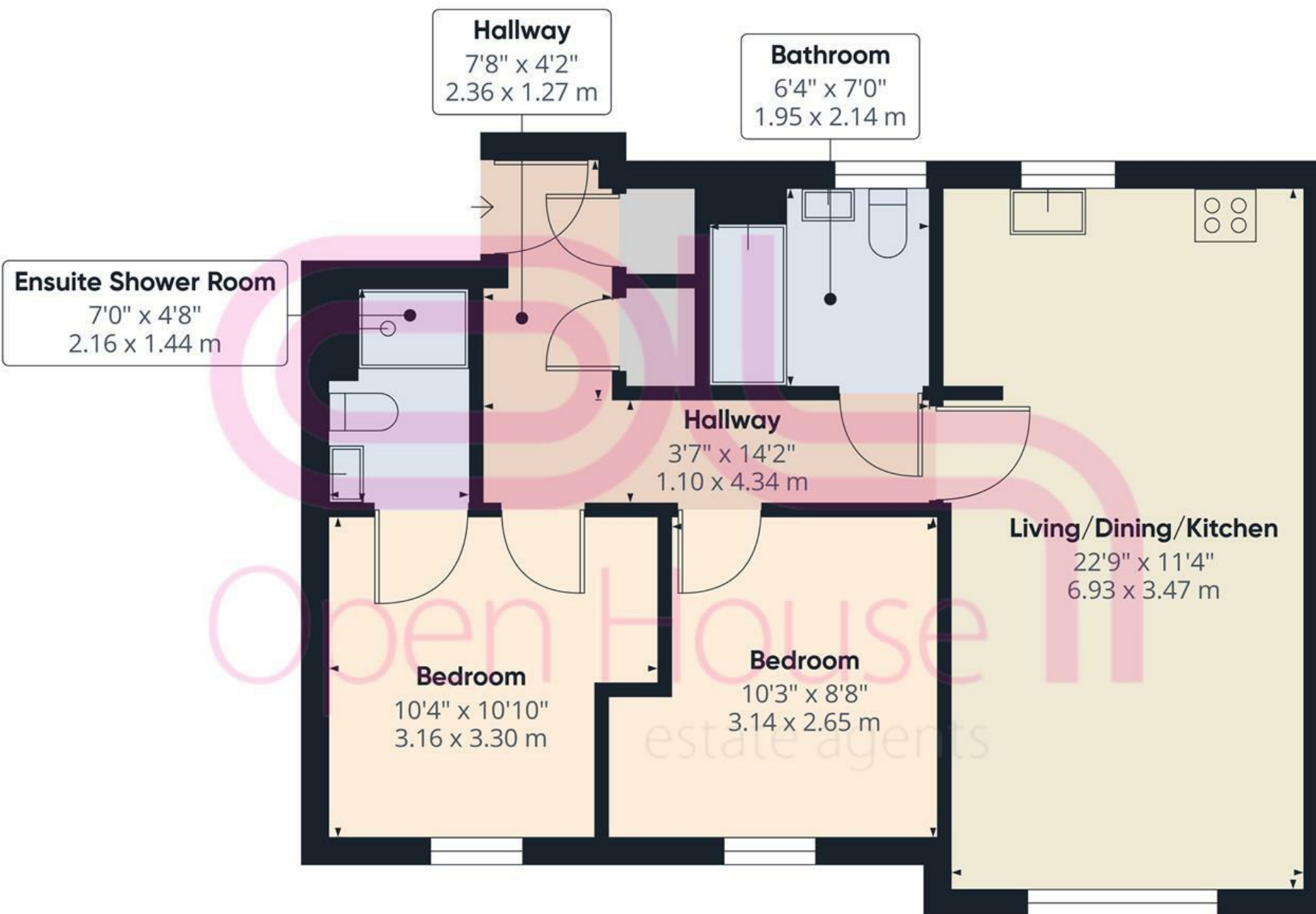
Family Bathroom

7' x 6'4 (2.13m x 1.93m)



206 South Coast Road, Peacehaven, East
Sussex, BN10 8JP
01273 830 987
bnsales@localagent.co.uk





Approximate total area⁽¹⁾
631 ft²
58.7 m²

(1) Excluding balconies and terraces

Calculations reference the RICS IPMS 3C standard. Measurements are approximate and not to scale. This floor plan is intended for illustration only.

GIRAFFE360

