



Ground Floor Flat, 29 Silverdale Road, Hove

Guide Price £375,000

**MANSELL
McTAGGART**
Trusted since 1947

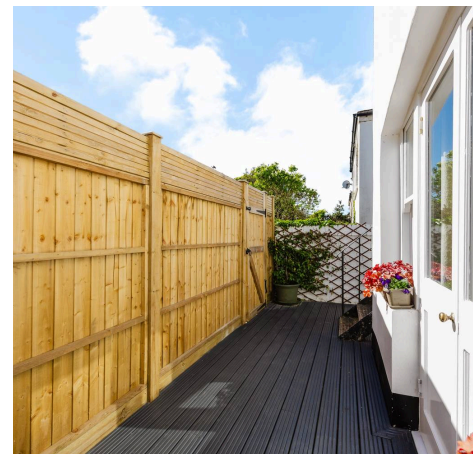
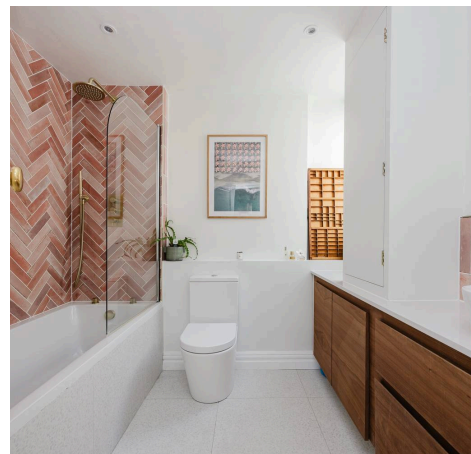
Ground Floor Flat

29 Silverdale Road, Hove

Council Tax band: B

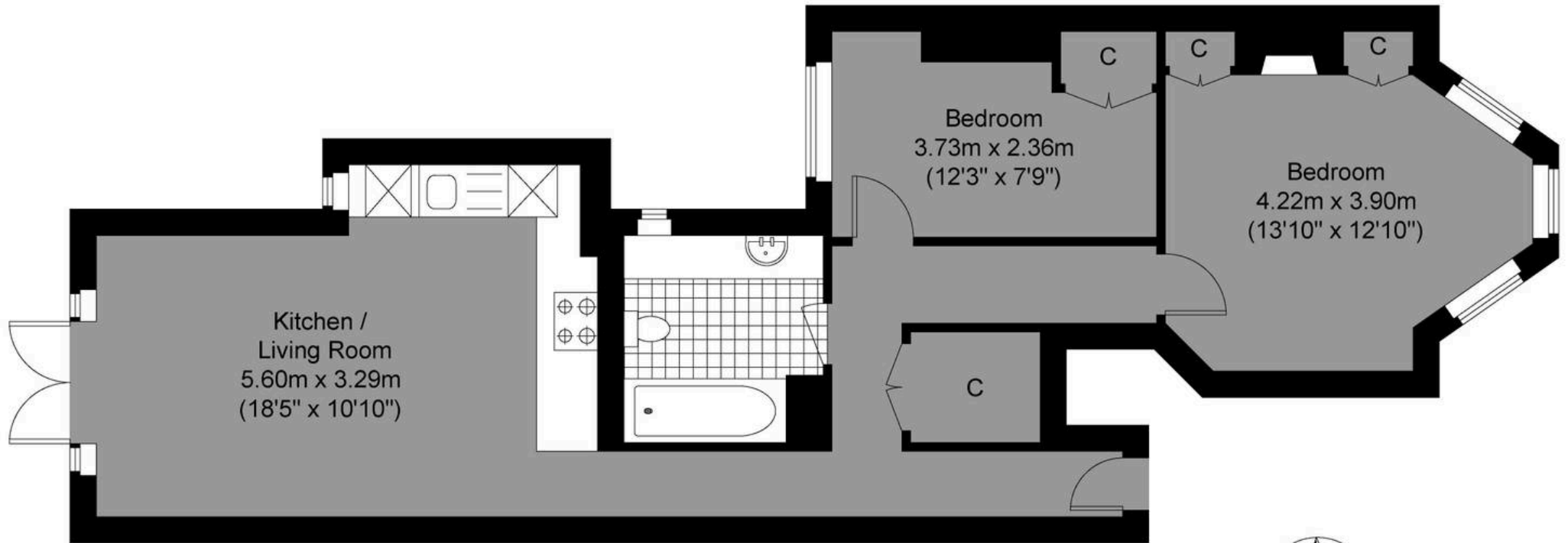
Tenure: Leasehold

- Guide Price £375,000–£400,000
- Two Bedroom Ground Floor Flat With Patio Garden
- Situated In The Popular 7 Dials
- Fully Renovated To A High Standard
- Walking Distance To Brighton Mainline Station & Churchill Square
- Sold With A Share Of Freehold
- Stunning Master Bedroom With Built In Wardrobes, Feature Fireplace & Bay Window
- Exclusive To Mansell McTaggart
- Open Plan Living/Kitchen Room With Skylights And French Doors Leading Out To The Patio



Approximate Gross Internal Area= 61.92 sq m / 666.50 sq ft

**MANSELL
McTAGGART**
— Trusted since 1947 —



Silverdale Road

Ground Floor
Approximate Floor Area
666.50 sq ft (61.92 sq m)



Illustration for identification purposes only, measurements are approximate, not to scale.

© Mansell McTaggart



Mansell McTaggart Hove

170 Church Road, Hove - BN3 2DJ

01273 044929

hove@mansellmctaggart.co.uk

www.mansellmctaggart.co.uk/branch/hove/

