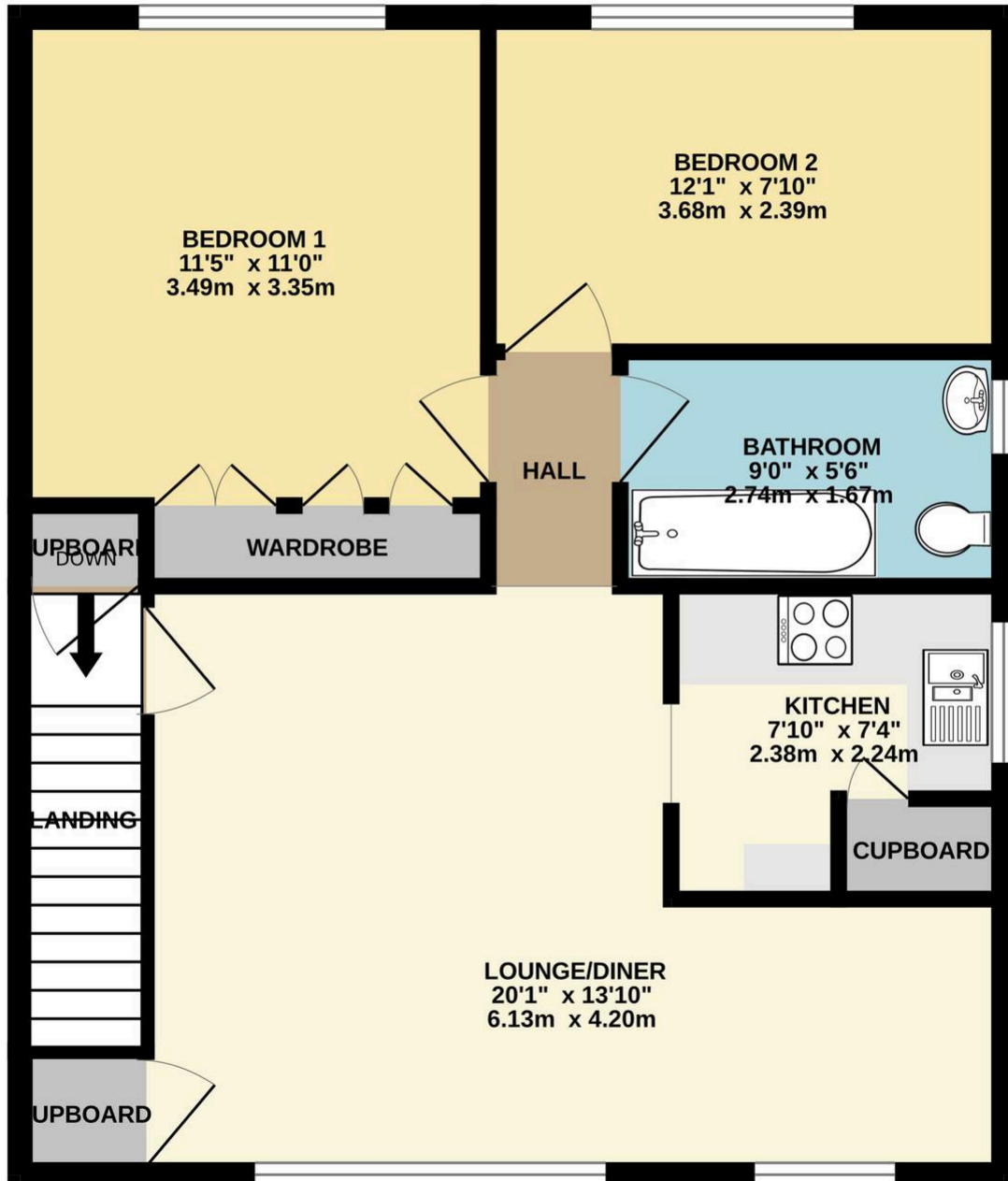


Ivydene Road, Reading

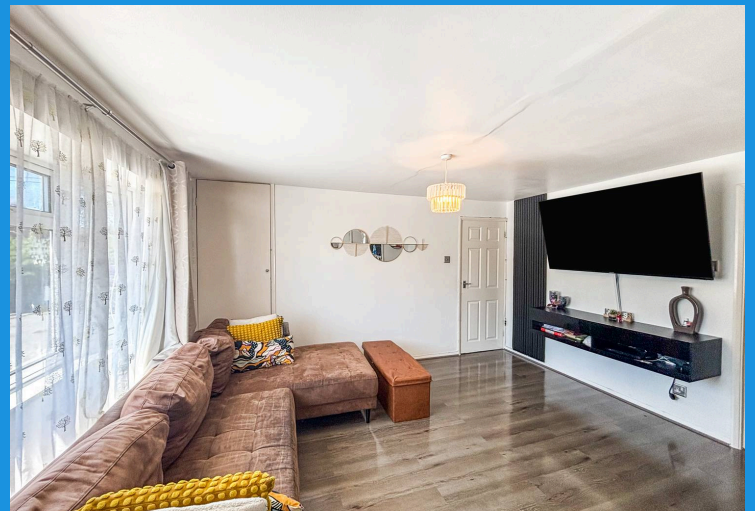
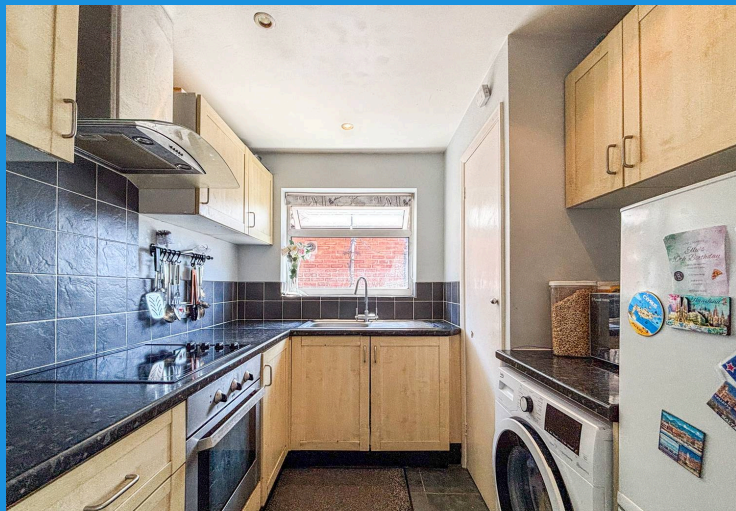
£1,400 pcm Leasehold

Two Bedroom Maisonette • Lounge / Diner • Kitchen • Bathroom • Enclosed Rear Garden • Unfurnished • Available 15th May • On Street Parking

1ST FLOOR
626 sq.ft. (58.1 sq.m.) approx.



You can include any text here. The text can be modified upon generating your brochure.



Entrance Hall

Access and stairs to the first floor.

Landing

Access to lounge / diner. Storage Cupboard.

Lounge / Diner

20' 1" x 13' 10" (6.12m x 4.22m)

'L' shaped lounge / diner. Two front aspect double glazed windows. Access to kitchen and inner hallway.

Kitchen

7' 10" x 7' 4" (2.39m x 2.24m)

Access from lounge / diner, side aspect double glazed windows, low level and eye level kitchen units with worksurface over. Fitted sink and drainer. Electric hob and oven. Storage cupboard.

Hallway

Access to both bedrooms and family bathroom.

Bathroom

9' 0" x 5' 6" (2.74m x 1.68m)

Side aspect double glazed window. Three piece bathroom suite with bath with shower attachment, low level WC, and wash hand basin.

Bedroom One

11' 5" x 11' 0" (3.48m x 3.35m)

Rear aspect double glazed window. Built in wardrobes.

Bedroom Two

12' 1" x 7' 10" (3.68m x 2.39m)

Rear aspect double glazed window.

