

## ***Our View “A superb property conveniently located on the outskirts on Newton Abbot”***

### **A well presented three bedroom semi detached property with enclosed gardens and driveway located on a culdesac on the outskirts of Newton Abbot**

The accommodation begins with an entrance hallway featuring wood-effect flooring. From here, there is access to a downstairs WC, which includes a low-flush toilet, pedestal wash hand basin, and an obscure double-glazed window to the front. Continuing through the hallway, at the rear of the property you will find a spacious living room with a double-glazed window and double doors leading out to the rear garden, along with a useful storage cupboard. Stairs rise to the first floor, where the landing provides access to three bedrooms, all of which offer double-glazed windows overlooking either the front or

rear of the property. The master bedroom benefits from a modern fitted ensuite shower room comprising a low-flush WC, pedestal wash basin, and mains-fed shower, with part-tiled walls. Completing the accommodation is a family bathroom, which includes a low-flush WC, pedestal wash hand basin, panel bath, partially tiled walls, and an obscure double-glazed window to the front. Externally, the property benefits from enclosed and well-presented gardens, with a driveway offering parking for two cars. To the rear is a deceptively spacious garden with a patio area leading out from the living room, providing an ideal space for outdoor dining and entertaining. Beyond the patio is a lawned area and a storage shed. The garden backs onto woodland, offering privacy and a pleasant outlook that must be seen to be appreciated

- Well presented property
- Living room
- Kitchen dining room
- Three bedrooms (master ensuite)
- Family bathroom
- Enclosed gardens
- Driveway
- Culdesac location
- 
- 

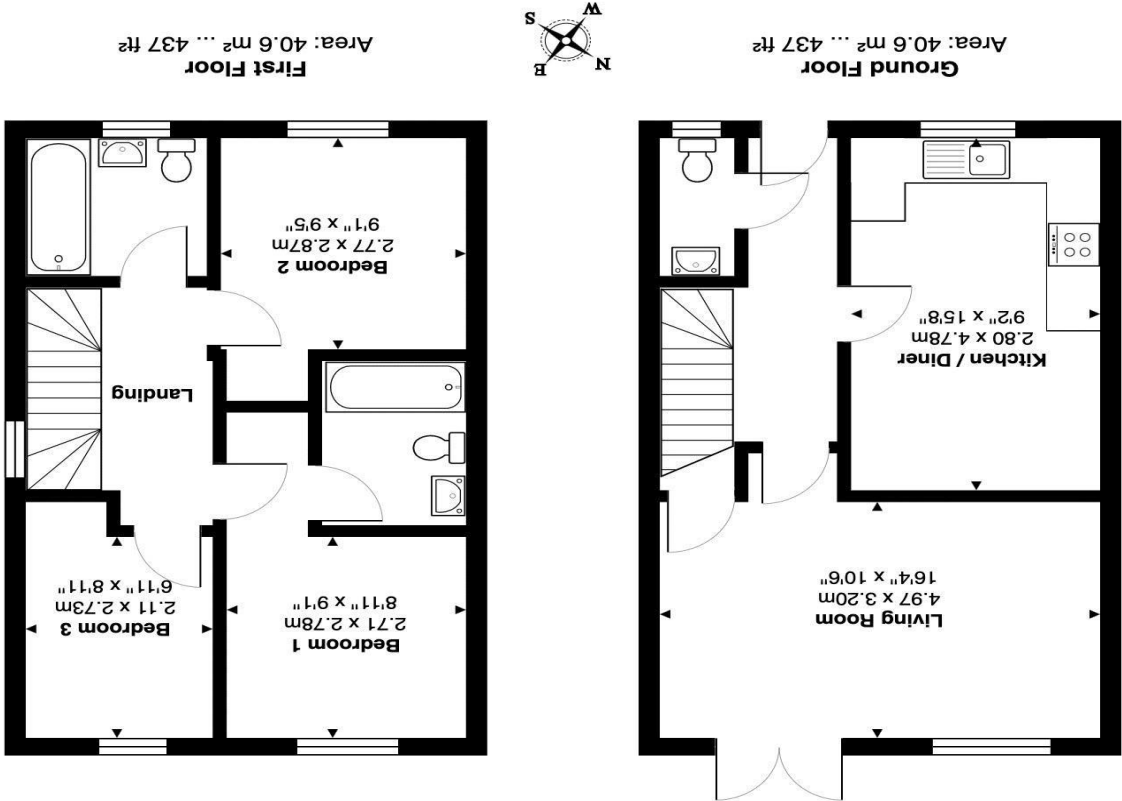
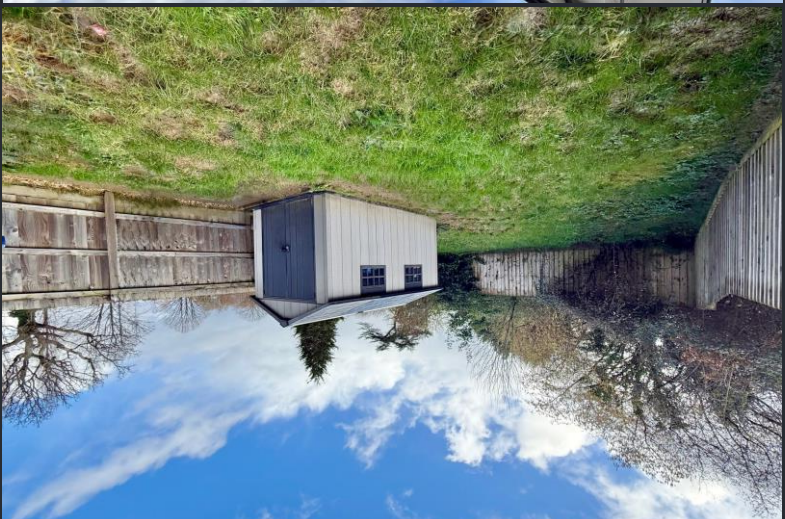
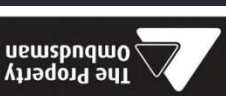
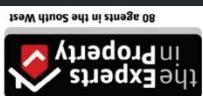






6 Queen Street | Newton Abbot | Devon | TQ12 2EF | Tel: 01626 298400

ALLSWORTH  
PROPERTY



ALLSWORTH  
PROPERTY

8 Horseshoe Drive, Newton Abbot, TQ12 6WL  
Guide Price £299,950 Ref: DSN7148

