



Middlemarch

Woodfields, Northampton

oriordanbond
SALES & LETTINGS



Middlemarch

Woodfields

NN3 8QY

PRICE £190,000

A deceptively spacious two double bedroom semi-detached property, situated in a cul-de-sac, within the popular Woodfields area. The property is offered for sale with no onward chain.

Accommodation comprises entrance hall with walk-in storage cupboard, sitting room, dining room, fitted kitchen, two first floor double bedrooms and a bathroom with separate WC. Outside is an enclosed rear garden, low maintenance frontage and allocated off road parking for one car. Further benefits include uPVC double glazing and gas radiator heating. (B/866/S)

Additional information

- Council Tax Band: B
- Energy Efficiency Rating: C

Viewing

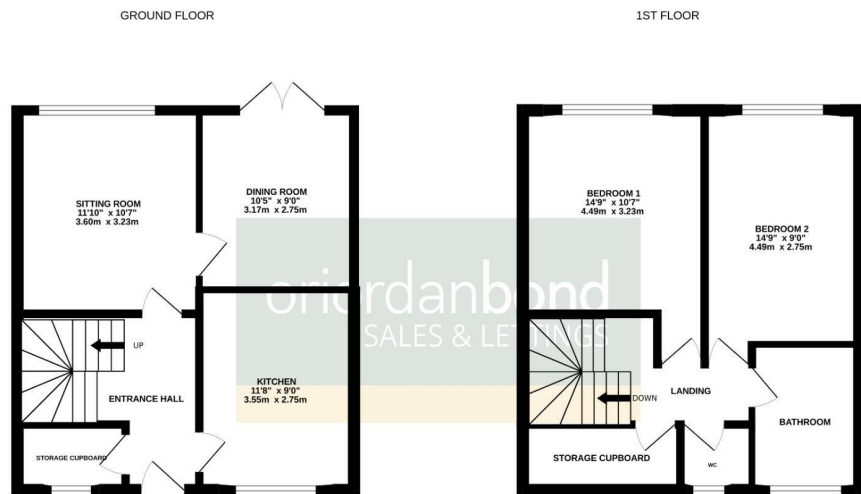
Viewing strictly by appointment – details below

Disclaimer

O'Riordan Bond Estate Agents Limited has not tested apparatus, equipment, fittings or services and so cannot verify they are in working order. The buyer is advised to obtain verification from their solicitor or surveyor.

O'Riordan Bond Weston Favell Sales
01604 784007

westonfavell@oriordanbond.co.uk



TOTAL FLOOR AREA : 866 sq.ft. (80.5 sq.m.) approx.

Whilst every attempt has been made to ensure the accuracy of the floorplan contained here, measurements of doors, windows, rooms and any other items are approximate and no responsibility is taken for any error, omission or mis-statement. This plan is for illustrative purposes only and should be used as such by any prospective purchaser. The services, systems and appliances shown have not been tested and no guarantee as to their operability or efficiency can be given.
Made with Metropen 02/02/20

