

Your Logo

## 13 Abbottsmede Close,

Guide Price £300,000

1 1 1



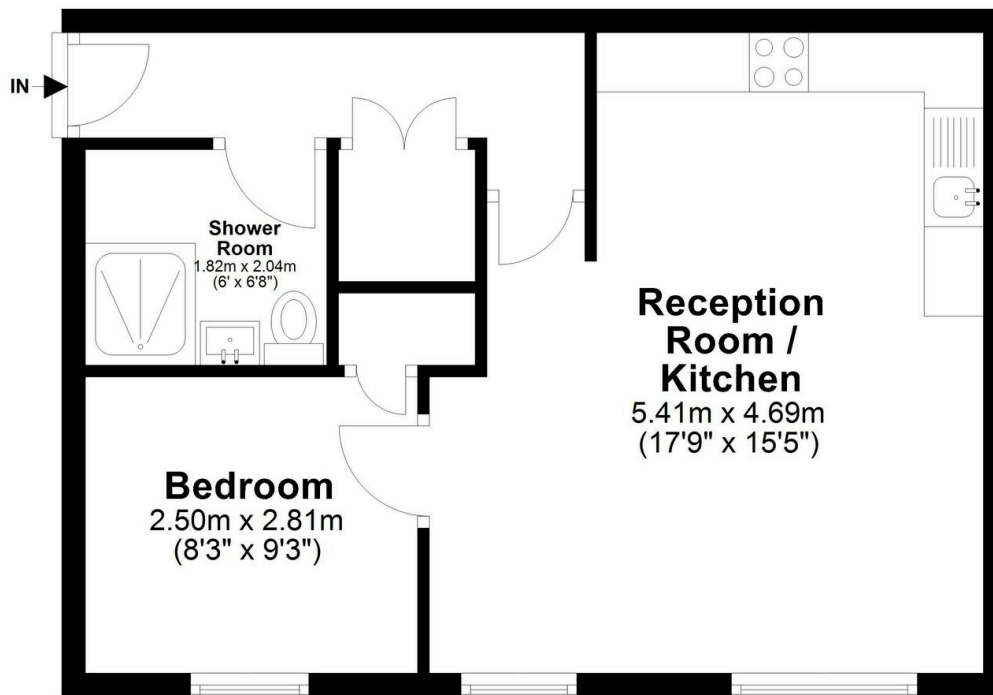
For All Enquiries Quote (DB1594) - A spacious and well-appointed ground floor apartment forming part of this highly regarded and exceptionally popular development of apartments and houses, set in the heart of leafy Strawberry Hill.

## Key Features

- For all enquiries quote (DB1594)
- Allocated parking space
- Well-kept communal gardens
- Secure entry phone system
- 
- Ground floor apartment
- Open plan lounge/kitchen
- Short walk to Strawberry Hill station
- 
- 

## Ground Floor

Approx. 41.1 sq. metres (442.5 sq. feet)



Total area: approx. 41.1 sq. metres (442.5 sq. feet)