



Blenheim Court

FARNHAM ROAD | LISS | HAMPSHIRE | GU33 6JE

Wilson | Hill

Each Apartment Comprises: Two Spacious Double Bedrooms | Fully Fitted Bathroom with Walk-In Shower and separate Bath | Luxury Fitted Kitchen/Living/Dining Room | Utility Room | Entrance Hall | Lift | Parking for One Car and Visitor Parking | Some also have a Balcony

Liss 1 mile, Petersfield 4.5 miles, Farnham 14 miles, Guildford 23 miles, London 53 miles



| The Properties

Set on the outskirts of the Hampshire village of Liss and surrounded by beautiful open countryside, Blenheim Court comprises age-exclusive lifestyle apartments in an idyllic and tranquil environment. Care packages are available which could range from help with small daily tasks such as changing a light bulb, to assistance with medication. It's up to you to decide how much or how little help you would like and you only ever pay for services when you use them.

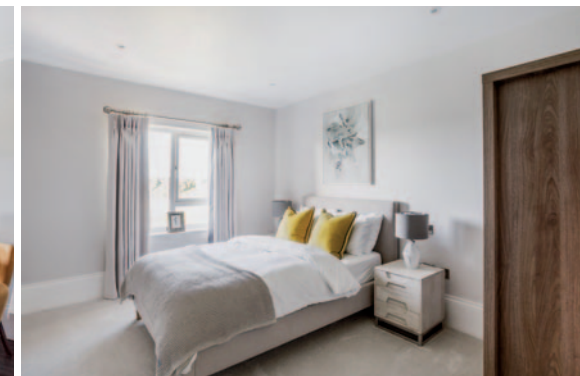
There is a separately owned brand new luxury care home on the same site offering excellent quality care and the very best facilities.

4 – First Floor Two Bedroom Apartment, about 1047 square feet

5 – First Floor Two Bedroom Apartment, about 993 square feet

6 – First Floor Two Bedroom Apartment, about 945 square feet

12 – Ground floor Two Bedroom Apartment, about 938 square feet





Location

Blenheim Court can be found on the B3006 Farnham Road, just a short distance from the A3. This major route takes you directly to the coast in the south, and northbound to Farnham, Guildford and on to London.

Liss is also well served by public transport. Liss station is under a mile from Blenheim Court, and there are frequent direct services to London Waterloo in under 1hr 15mins, or Portsmouth in just 39 minutes. A local bus service connects Liss to the nearby towns of Alton, Petersfield and Selborne. Liss also provides a comprehensive range of local shops and amenities.

The area sits in The Southdowns National Park whilst there are many National Trust attractions in the area with Uppark House in Petersfield, Stansted Park at

Rowlands Castle and The Vyne at Basingstoke, providing beautiful settings for walks. For the energetic, there are many golf courses locally, such as Petersfield Golf Club in Liss. A good choice of health and sports clubs are available as well as a large selection of pubs and restaurants in the area which cater for a broad range of tastes. Excellent shopping facilities are available in nearby Petersfield whilst Guildford, Portsmouth and Southampton provide even wider shopping and leisure experiences.

Outside

Blenheim Court has attractive communal gardens with resident and visitor parking.



Directions to GU33 6JE

Following the A3 south from Liphook after a few miles and at the Ham Barn roundabout take the first exit on the left signed to Liss. Follow the road along for 0.8 miles into West Liss, fork right onto Farnham Road and the entrance to Blenheim Court will be found 0.3 miles on the left hand side.

“ A beautiful retirement development for the over 55's between Petersfield and Liphook with some lovely country views ”

Service Charge: Includes buildings insurance, rubbish collection, communal area cleaning, upkeep of gardens, lighting and heating to communal areas, lift maintenance.

All Mains Services

Local Authority: East Hampshire District Council,
www.easthants.gov.uk, 01730 266551

Council Tax: TBC

EPC: B84

Viewing strictly by appointment.

Apartment 12



Total Floor Area 938 sq ft 87 sq m

Kitchen/Living/Dining	28'10" x 11'2"	8800mm x 3400mm
Master Bedroom	16'5" x 13'1"	5000mm x 4000mm
Bedroom 2	13'5" x 9'10"	4100mm x 3000mm

W – Wardrobe C – Cupboard CLK – Cloakroom
Floor plans show approximate measurements only. Exact layout & sizes may vary.



Wilson Hill have not tested apparatus, equipment, fittings or services and so cannot verify they are in working order. The buyer is advised to obtain verification from their solicitor or surveyor. Maps and plans shown as a guide only.

Details and a selection of photographs taken from Apartments 4 & 12 dated October 2019.

