



Greenfell Mansions, Glasher Street, London, SE8 3EX



Greenfell Mansions, London SE8

Share of Freehold (160 years remaining)

A spacious fourth-floor apartment in Deptford's Greenfell Mansions, offering modern living with a generous covered balcony. With secure parking and share of freehold, this well-connected home sits between Greenwich's heritage and Deptford's creative energy.

Key Features

- Large covered balcony
- Excellent transport links
- Walk to Central Greenwich
- Allocated parking
- Service Charge: **£3,368.24**
- Council Tax: **C**
- Chain free
- EPC: **B**

Spanning 624 square feet, the apartment features thoughtfully designed living spaces that maximise natural light and functionality. The standout feature is undoubtedly the large covered balcony, offering a private outdoor retreat. This versatile space extends your living area, perfect for morning coffee, alfresco dining, or simply unwinding after a busy day. The secure allocated parking space adds exceptional convenience in an area where such provision is highly sought after.

The location places you at the crossroads of Greenwich's elegant heritage and Deptford's vibrant contemporary culture. Greenwich Park's expansive green spaces, historic architecture, and riverside walks are within easy reach, whilst Deptford's thriving creative scene centred around Deptford Market Yard brings independent cafes, artisan food stalls, and weekend markets to your doorstep. The area's character blends artistic energy with riverside charm, creating a neighbourhood that feels both established and excitingly progressive.









GREENFELL
MANIONS 125-152

KEY
18-82
ON
1-118

GLAISHER
STREET

Greenfell Mansions

Approximate Gross Internal Area = 63.4 sq m / 682 sq ft

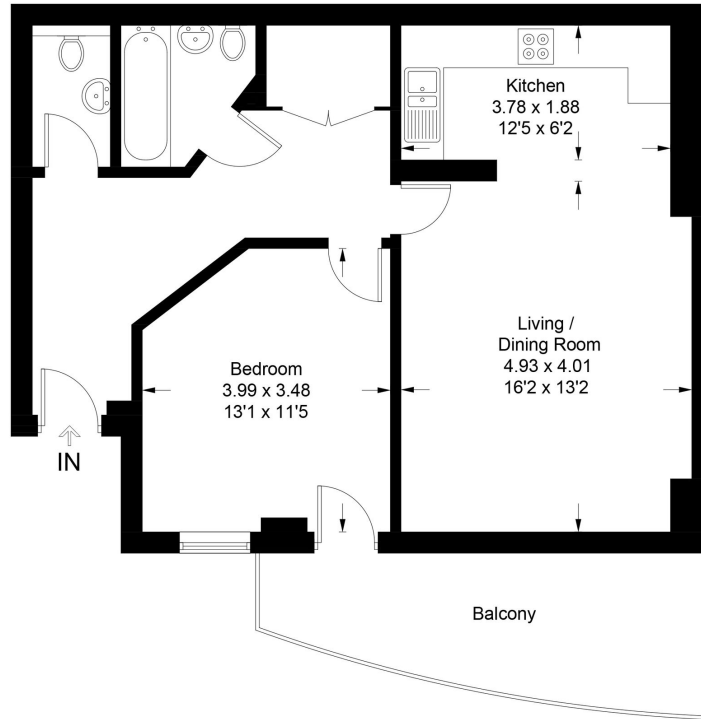


Illustration for identification purposes only, measurements are approximate, not to scale. Fourlabs.co © (ID1138693)