

10 Dymens Meadow Shrewsbury SY2 5JL



2 Bedroom House
£825 PCM

The features

- TWO BEDROOM TERRACED HOME
- LIVING ROOM
- TWO DOUBLE BEDROOMS
- LAWNED GARDEN TO FRONT
- COMMUNAL PARKING
- GAS CENTRAL HEATING AND DOUBLE GLAZING
- KITCHEN/DINING ROOM
- BATHROOM
- ENCLOSED PAVED GARDEN TO REAR
- EPC RATING C



****TWO BEDROOM MID TERRACED HOME****

In this convenient residential location with local schools and amenities close by. The accommodation briefly comprises of: Entrance hall, living room, kitchen/dining room, utility area, two double bedrooms, bathroom with shower, enclosed rear garden with patio and access to communal parking.

Property details

ENTRANCE HALL

LIVING ROOM

KITCHEN/DINING ROOM

STAIRS AND LANDING

BEDROOM 1

BEDROOM 2

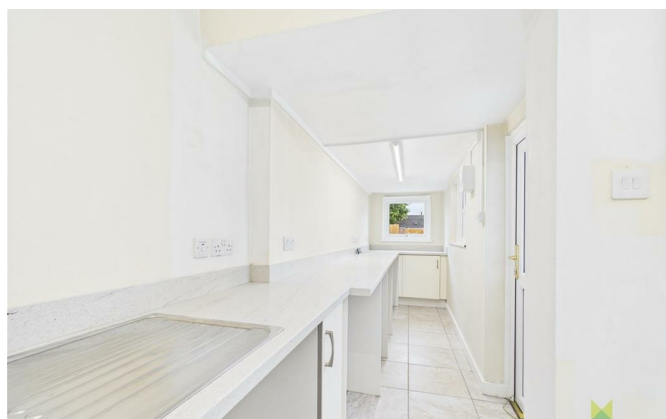
BATHROOM

GARDEN AND OUTSIDE

The property benefits from communal parking. To the front is a lawn garden to the rear the garden is paved for ease of maintenance.

10 Dymens Meadow, Shrewsbury, SY2 5JL.

2 Bedroom House
£825 PCM





Judy Bourne

Director at Monks
judy@monks.co.uk

Get in touch

Call. 01743 361422
Email. info@monks.co.uk
Click. www.monks.co.uk

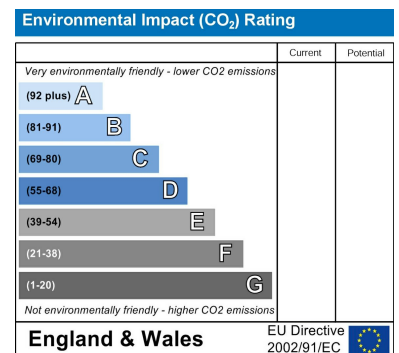
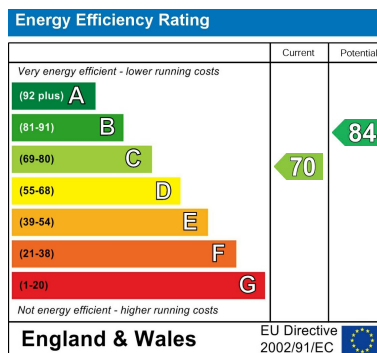
Shrewsbury office

10a-11 Shoplatch,
Shrewsbury, Shropshire, SY1

We're available 7 days a week

HOME – four words that define who,
and what we are:

Honest, Original, Motivated, Empathetic



Monks for themselves and for the vendors of this property, whose agents they are give notice that:

- These particulars provide a general outline only for the guidance of intended purchasers and do not constitute part of an offer or contract.
- All descriptions, dimensions and distances are approximate, references to state and condition, relevant permissions for use and occupation and other details are provided in good faith and believed to be correct.
- No person in the employment of Monks has any authority to make or give any representation or warranty whatever in relation to this property.
- Electricians and other appliances mentioned in these particulars have not been tested by Monks. Therefore prospective purchasers must satisfy themselves as to their working order.