



Mansell Street, E1

£500,000

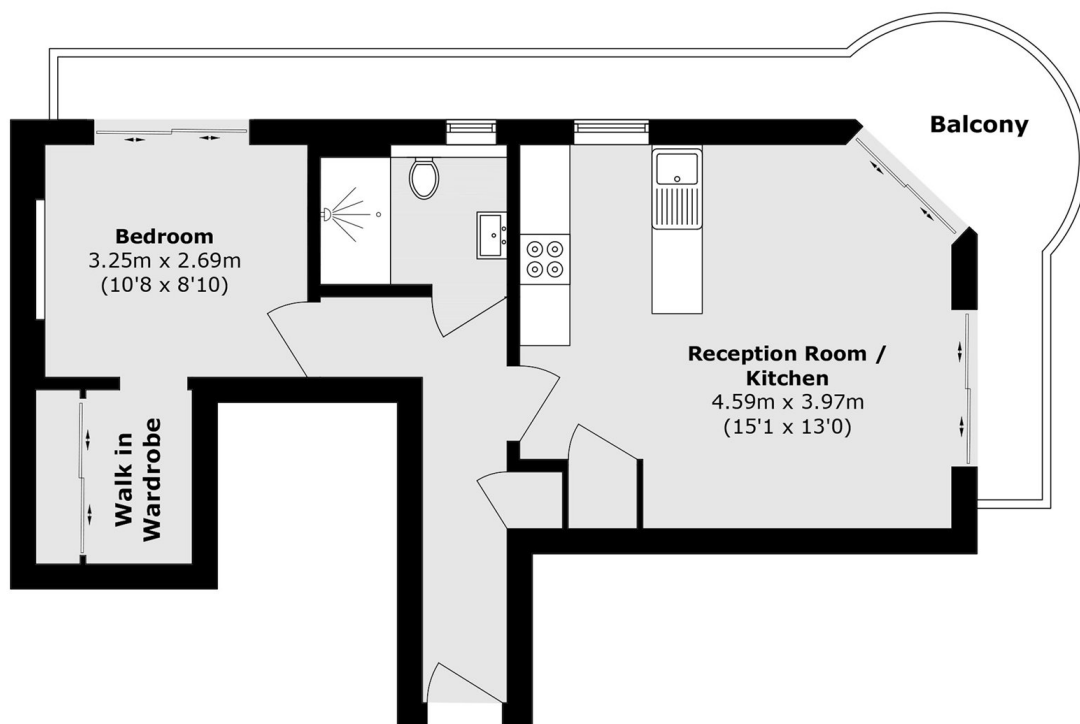
This well-presented one-bedroom apartment is located on the seventh floor. The apartment comprises a double bedroom with a walk-in wardrobe, a contemporary family bathroom and an open plan kitchen/living room that leads to the wrap around balcony, which is also accessible from the bedroom. Being a corner apartment, it benefits from being dual aspect with a predominantly south facing view. All furniture and appliances are included in the sale and the apartment is being sold chain free.

The property offers excellent transport links with Aldgate, Tower Hill, and Tower Gateway stations all nearby. Tower Bridge is also within easy walking distance, making this an ideal, well-connected home for City professionals.

Features

- Wrap Around Balcony
- Dual Aspect
- South Facing
- Concierge
- Walk-in Wardrobe
- Fully Furnished

Mansell Street, London, E1



Total area (approx.): 47.3 sq. m (509.1 sq. ft)

Total area (approx.): 14.6 sq. m (157.1 sq. ft)