



CUMBERLAND STREET
PIMLICO

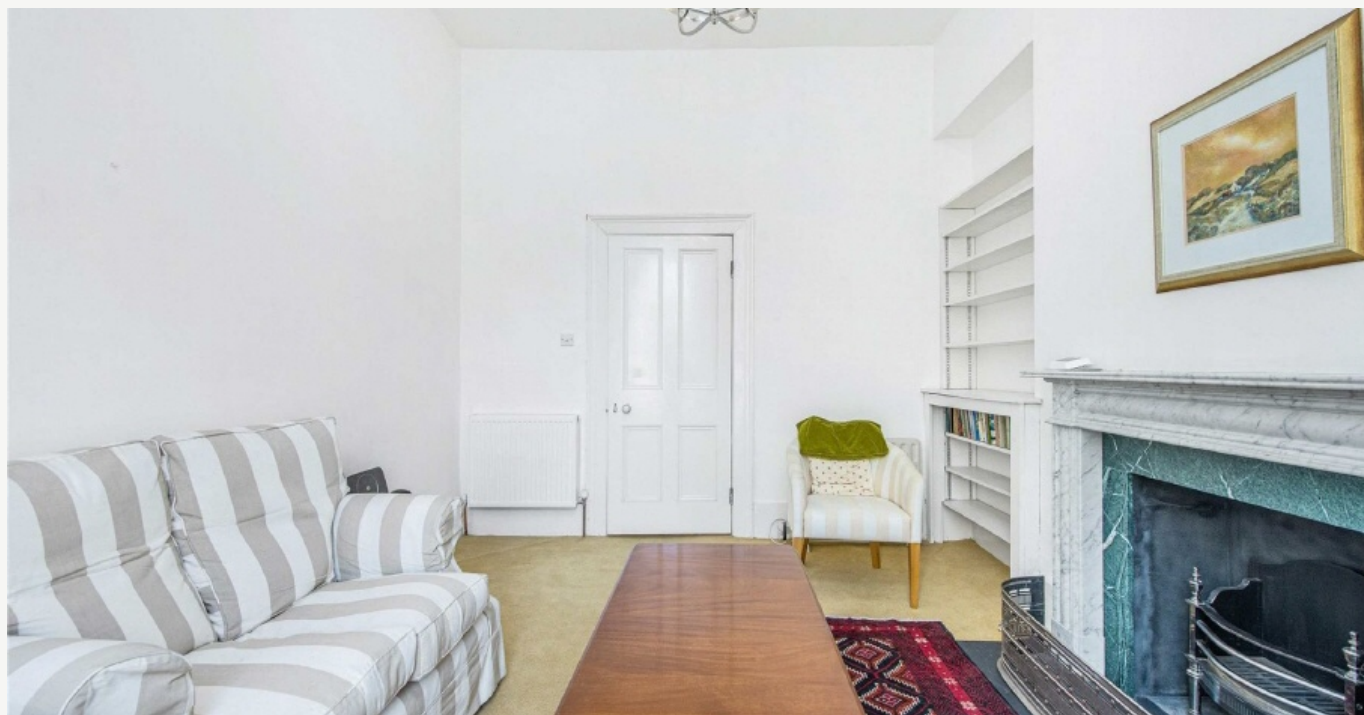
JACKSON-STOPS 

CUMBERLAND STREET PIMLICO, SW1V

ASKING PRICE: £2,250 PCM

A first floor, one bedroom, flat in the Pimlico Grid. The property offers plenty of natural light and an eat in kitchen.

Just 0.4 miles from Victoria Station, 0.6 miles from Pimlico Underground Station, 0.6 miles from Sloane Square Underground Station and 0.7 miles from Battersea Park.



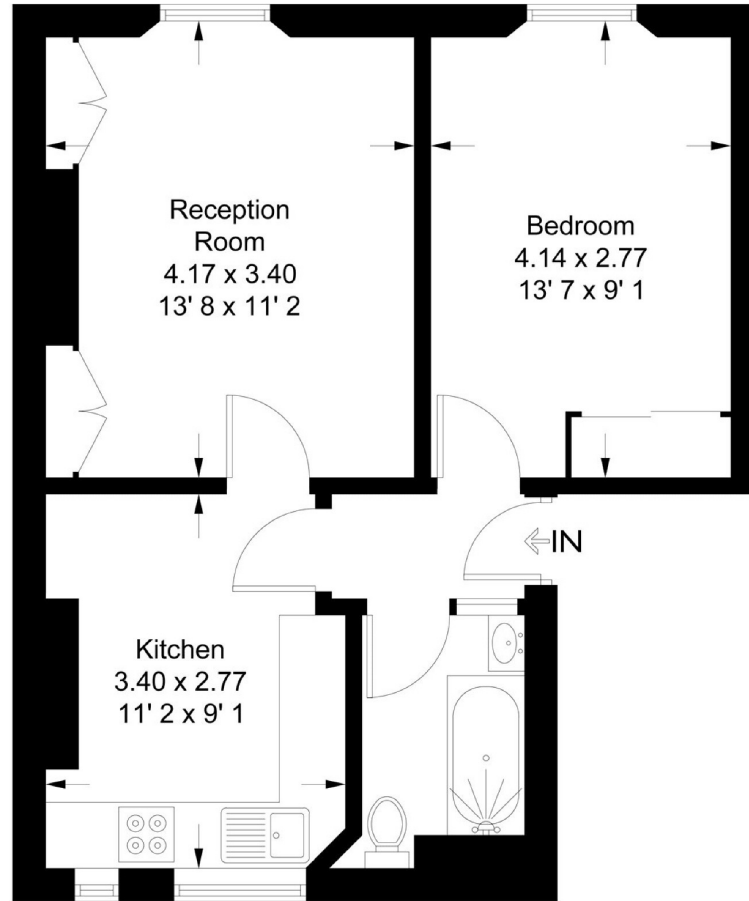
KEY FEATURES

- Bedroom
- Bathroom
- Kitchen
- Reception
- Balcony
- Tax Band: E



Cumberland Street

Approximate Gross Internal Area = 453 sq ft / 42.1 sq m



First Floor

This plan is not to scale and must be used as layout guidance only. All measurements and areas are approximate and should not be relied upon to provide accurate information. This plan must not be relied upon when making property valuations, design considerations or any other such relevant decisions. We accept no responsibility or liability (whether in contract, tort or otherwise) in relation to any loss whatsoever arising from or in connection with any use of this plan or the adequacy, accuracy or completeness of it or any information within it.

Energy Rating: C. We aim to make our particulars both accurate and reliable. However they are not guaranteed; nor do they form part of an offer or contract. If you require clarification on any points then please contact us, especially if you are travelling some distance to view. Please note that appliances and heating systems have not been tested and therefore no warranties can be given as to their good working order.

ASKING PRICE: £2,250 PCM

PIMLICO

020 7828 4243

pimlicolettings@jackson-stops.com

jackson-stops.co.uk

JACKSON-STOPS 