



**Aldreds**  
Estate Agents

6 Avondale Road

Gorleston, NR31 6DL

Guide Price £415,000 - £425,000



5



3



2



D

## 6 Avondale Road

Gorleston, NR31 6DL

**\*\*Guide Price £415,000-£425,000\*\*** This spacious five bedroom mid-terrace home is ideally positioned in a desirable location close to the beach with sea views. Beautifully maintained throughout and presented in true turn-key condition, the property offers generous and versatile accommodation perfect for modern family living, including an impressive 45ft kitchen/dining room/snug that creates a wonderful open space for entertaining and everyday life.

Upstairs, the home continues to impress with five well-proportioned double bedrooms, including a superb master bedroom with en-suite positioned to the rear. Outside, the property benefits from a private south-facing rear garden, providing a sunny and secluded space to relax, making this an exceptional opportunity to secure a stylish and spacious coastal home.

### Porch

Double glazed door to front

### Entrance Hall

Laminate floor, access to lounge and kitchen, carpeted stairs with glass balustrade to first floor with under stairs cupboard.

### Lounge

12'7" x 14'9" (3.86m x 4.50m)

Carpet floor, double glazed bay window to front, double radiator, decorative fireplace.

### Kitchen With Snug

11'5" x 30'6" (41'7" through to dining room) (3.5m x 9.3m (12.7m through to dining room))

Combination of tile floor with wood effect vinyl section, double glazed French doors to rear, solid wood countertops with under and over counter storage cupboards, double gas oven, gas hob with extractor, sink and draining board, space for free standing fridge/freezer, washing machine, dryer, integrated dishwasher and wine fridge, breakfast bar with USB points. Opening through to dining area, multi fuel burner in the snug.

### Dining Area

11'0" x 10'9" (3.37m x 3.30m)

Continuation of tile floor, double glazed French doors to rear, opening through to kitchen.

### First Floor Landing

Carpet floor, carpeted stairs with glass balustrade to second floor, radiator, double glazed window to front, access to bathroom and bedrooms 2 and 5.

### Bedroom 2

15'1" x 10'5" (4.62m x 3.20m)

Carpet floor, double glazed bay window to front, radiator.

### Bedroom 5

10'9" x 11'1" (3.28m x 3.40m)

Carpet floor, double glazed window to rear, radiator, fitted wardrobes.

### Bathroom

5'6" x 8'11" (1.70m x 2.74m)

Tile floor, double glazed window to side, free standing roll top bath with shower attachment, WC, basin.

### First Floor Secondary Landing

Carpet floor, inset storage cupboards, access to master bedroom and en-suite.

### Master Bedroom

11'6" x 10'2" (3.53m x 3.12m)

Carpet floor, double glazed window to rear, radiator, fitted wardrobes.





### Master En-Suite

8'2" x 7'4" (2.49m x 2.26m)

Vinyl floor, double glazed window to side, double shower cubicle with wall mounted shower, WC, basin with vanity unit, built in storage cupboard.

### Second Floor Landing

Carpet floor, storage cupboard, access to bedrooms 3 and 4.

### Bedroom 3

12'4" x 12'2" (3.76m x 3.73m)

Carpet floor, two double glazed windows to front with sea view, radiator, fitted wardrobes, access to en-suite and separate WC.

### Bedroom 3 En-Suite

Tile floor, shower cubicle with wall mounted shower, basin.

### Bedroom 4

10'9" x 10'9" (3.28m x 3.28m)

Carpet floor, double glazed window to rear, radiator.

### Outside Front

Brick weave path to front door, brick wall boundaries, access gate.

### Outside Rear

Paving slabs with chipped slate, initial decking from back door, with addition decked seating area to the rear, combination of brick wall and timber fence boundaries, inset wood fired oven.

### Council Tax

Great Yarmouth Borough Council - Band C.

### Tenure

Freehold.

### Services

Mains gas, electric, water, drainage.

### Directions

From the Gorleston office head south along the High Street, continue over the traffic lights into Lowestoft Road, continue up the hill, turn left into Avondale Road where the property can be found on the right.

### Location

Gorleston on Sea is a coastal town 2 miles from Great Yarmouth centre and has a varied selection of local shops \* Golf Course \* Modern District hospital \* Schools for all ages \* Library \* Regular bus services to the main shopping areas and a sandy beach.

### What 3 Words

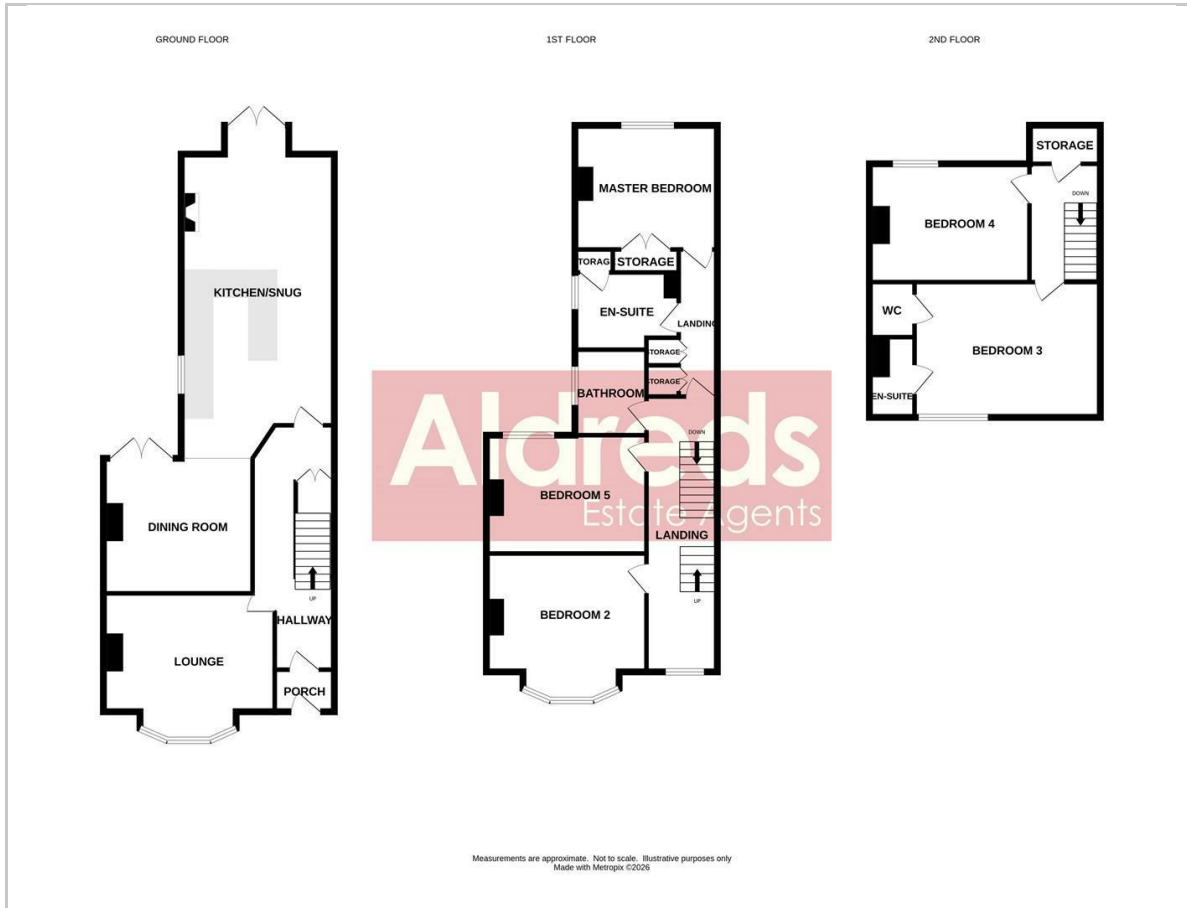
///builder.dignitary.oath

### Ref

G18473/03/26



## Floor Plan



## Area Map



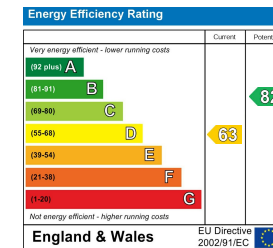
## Viewing

Please contact our Aldreds Gorleston Office on 01493 664600 if you wish to arrange a viewing appointment for this property or require further information.

### Disclaimer

These particulars are issued on an understanding that all negotiations shall be conducted through Messrs. Aldreds. Please note: Messrs. Aldreds for themselves and for the vendors or lessors of this property whose agents they are given notice that: 1. Particulars are set out as a general outline only for guidance of intending purchasers or lessees, and do not constitute nor constitute part of, an offer or contract. 2. All descriptions, dimensions, references to condition and necessary permissions for use and occupation, and other details are given without responsibility and any intending purchasers or tenants should not rely on them as statements or representations of fact but must satisfy themselves by inspection or otherwise as to the correctness of each of them. 3. No person in the employment of Messrs. Aldreds has any authority to make or give any representation or warranty whatever in relation to this property. 4. If you are proposing to visit the property and are travelling some distance please check with Aldreds on the issue of availability prior to travelling. 5. Aldreds Property Consultants and associated services may offer additional services to the prospective purchaser for which they will be entitled to receive a commission. Aldreds are pleased to be working with Mortgage Advice Bureau. They're an award-winning mortgage broker with over 1,400 advisers across the UK, and have access to over 12,000 mortgage products from over 90 lenders. Aldreds Estate Agents Ltd receive a commission of £200 on each completed case. Your home may be repossessed if you do not keep up repayments on your mortgage. There may be a fee for mortgage advice. The actual amount you pay will depend upon your circumstances. The fee is up to 1%, but a typical fee is 0.3% of the amount borrowed. Mortgage Advice Bureau is a trading name of Mortgage Seeker Limited which is an appointed representative of Mortgage Advice Bureau Limited and Mortgage Advice Bureau (Derby) Limited which are authorised and regulated by the Financial Conduct Authority. Mortgage Seeker Limited Registered Office: Lovewell Blake, Sixty Six North Quay, Great Yarmouth, Norfolk, NR30 1HE. Registered in England Number: 03721415. 6. Potential purchasers should check with their providers that the broadband and mobile phone coverage they would require is available.

## Energy Efficiency Graph



149 High Street, Gorleston, Norfolk, NR31 6RB  
 Tel: 01493 664600 Email: gorleston@aldreds.co.uk <https://www.aldreds.co.uk/>  
 Registered in England Reg. No. 08945751 Registered Office: 17 Hall Quay, Great Yarmouth, Norfolk NR30 1HJ  
 Directors: Mark Duffield B.S.c. FRICS. Dan Crawley MNAEA Paul Lambert MNAEA