



## Skerne Road, KT2

### £335,000

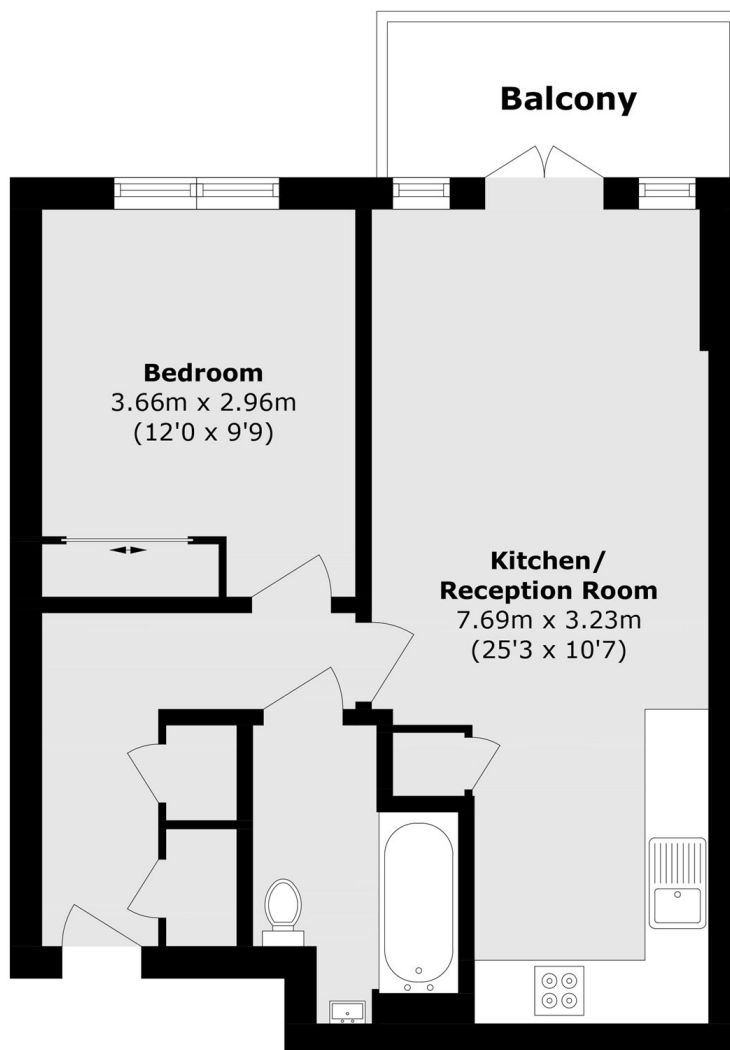
An immaculate one double bedroom apartment located in a smart modern development in the heart of Kingston. The property is located on the fourth floor of this secure development, accessed via lift service and would make an ideal first purchase or investment property. The apartment has a large living room with a private balcony overlooking the communal gardens, a separate kitchen which is open plan to the lounge and a smart, modern bathroom.

The apartment couldn't be better located on Skerne Road, which is less than 200 yards to the River Thames, Canbury Gardens and Kingston Station.

### Features

- One Double Bedroom
- Immaculate Condition
- Large Private Balcony
- Modern Bathroom
- Close To River
- Excellent Location

# Skerne Road, Kingston Upon Thames, KT2



Total area (approx.): 46.4 sq. m (499.4 sq. ft)

Balcony Total (approx.): 5.3 sq. m (57.3 sq. ft)