

HENDERSON CONNELLAN

ESTATE AGENTS

St. Marys Road, Kettering, NN15

"Location Location Location"

"Location Location Location"

This delightful three-bedroom semi-detached house offers comfortable family living with the significant advantage of a generous garden and an exceptionally convenient location. Situated within easy reach of the town centre, the train station, and reputable schools, this home is perfectly positioned. The property presents well-proportioned living spaces designed for everyday comfort. The ground floor comprises a welcoming reception room, a practical kitchen and a bathroom. Upstairs, you will also discover three comfortable bedrooms. The presence of UPVC windows and gas central heating ensures a warm and energy-efficient environment. Outside, the property boasts a front and rear generous garden. With its excellent accessibility to local amenities and transport links, this home combines an appealing living environment with superb practicality.

Living Room - 4.27m x 3.66m (14'0" x 12'0")

Kitchen - 3.96m x 3.35m (13'0" x 11'0")

Bathroom - 2.74m x 1.83m (9'0" x 6'0")

Bedroom 1 - 4.27m x 3.05m (14'0" x 10'0")

Bedroom 2 - 3.66m x 2.74m (12'0" x 9'0")

Bedroom 3 - 3.66m x 1.83m (12'0" x 6'0")

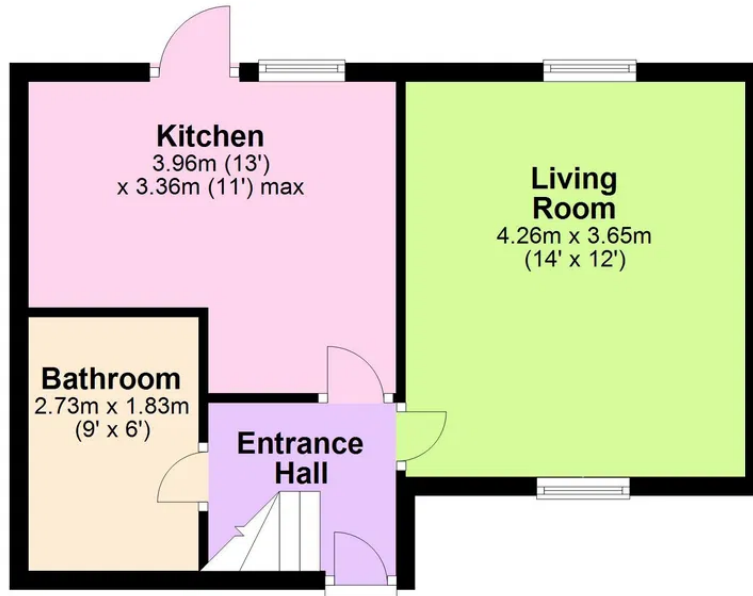
EPC RATING: C COUNCIL TAX: A





Ground Floor

Approx. 36.9 sq. metres (396.7 sq. feet)



First Floor

Approx. 37.0 sq. metres (397.8 sq. feet)



Total area: approx. 73.8 sq. metres (794.5 sq. feet)