



## Lewisham High Street, SE13

£3,600 Per calendar month

A newly refurbished top floor lateral flat offering 1,579 Sq Ft of space. There are four generous size bedrooms, one with en suite shower, and a large open plan living space perfect for professional sharers.

Lewisham High Street is conveniently positioned for Lewisham train and DLR stations. The amenities of Lewisham town centre are also within easy reach.

### Features

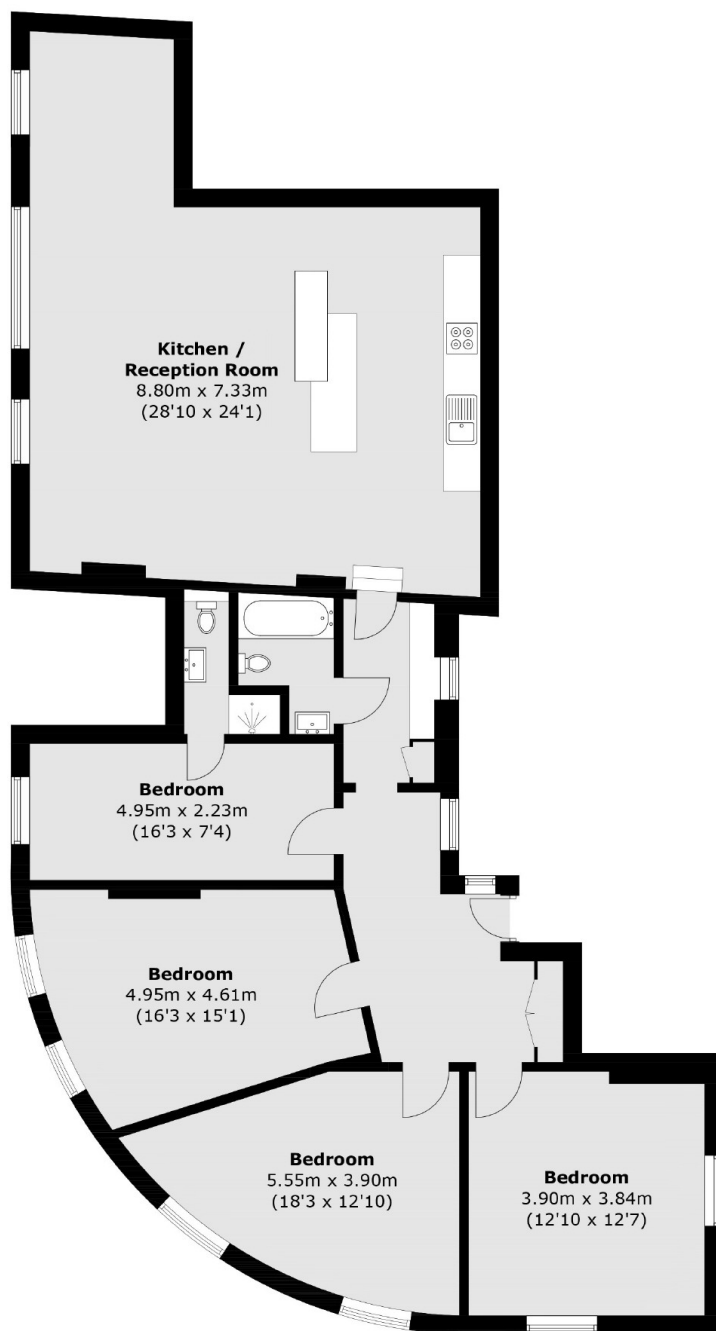
- Top Floor Flat
- Four Double Bedrooms
- Two Bathrooms
- 1,579 Sq Ft
- Close To Transport
- HMO Licence



Lewisham High Street, SE13



Lewisham High Street,  
London, SE13



### Third Floor

Total area (approx.): 135.2 sq. m (1,455.3 sq. ft)