

61A Bettsworth Road, Ryde, PO33 3EN

Asking Price £279,995

EPC Rating: Council Tax Band:

ELLIOTT
LINCOLN
ESTATE AGENTS & ASSOCIATES

Reassuringly familiar, refreshingly new



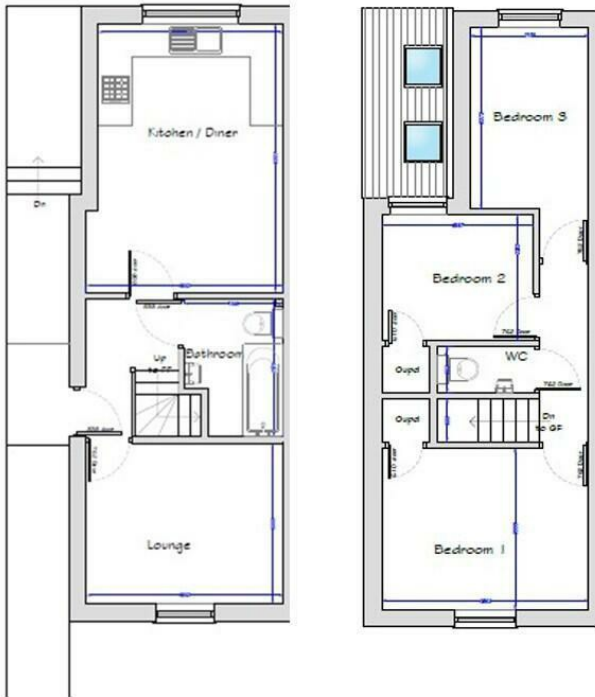
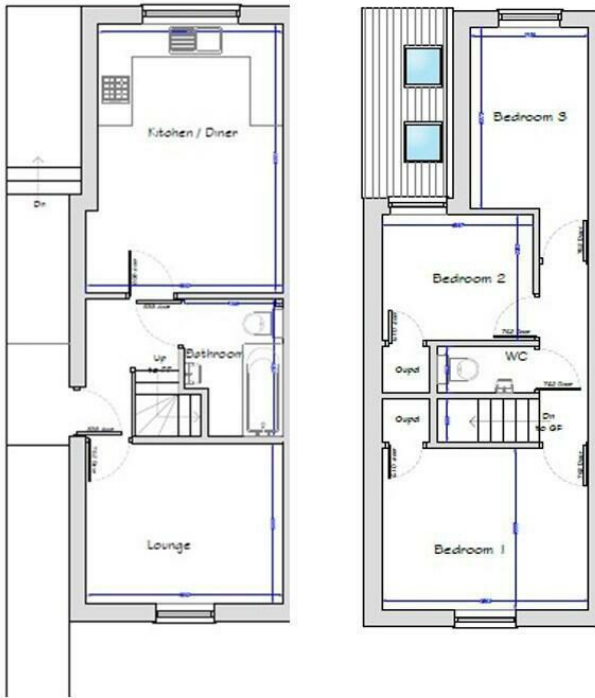
Brand-new Passive (EPC A) 3-bedroom, 1.5 bathroom semi-detached home in Ryde.

A rare opportunity to secure a state-of-the-art, ultra-energy-efficient brand-new home in a convenient Ryde setting. Built to a passive / low-energy standard with a predicted A-rated EPC, these superb houses are designed for low-cost living without compromising on style.

ELLIOTT
LINCOLN
ESTATE AGENTS & ASSOCIATES

Reassuringly familiar, refreshingly new

Call or WhatsApp: 01983 642622
office@elliottlincoln.co.uk
www.propertysoftwaregroup.com



Energy Efficiency Rating		
	Current	Potential
Very energy efficient - lower running costs		
(92 plus) A		
(81-91) B		
(69-80) C		
(55-68) D		
(39-54) E		
(21-38) F		
(1-20) G		
Not energy efficient - higher running costs		
England & Wales	EU Directive 2002/91/EC 