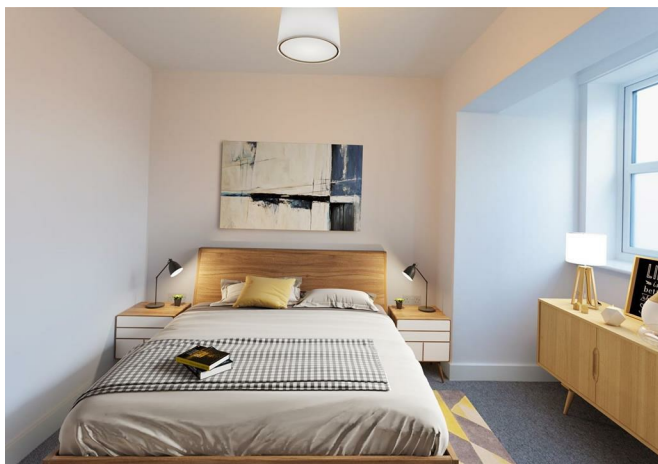




# Reigate Hill House, 28 Reigate Hill, Reigate

£1,475 Per Month





“

With Reigate Station on its doorstep, Reigate Hill House offers convenience for commuters as well as being within walking distance to the town centre.

”



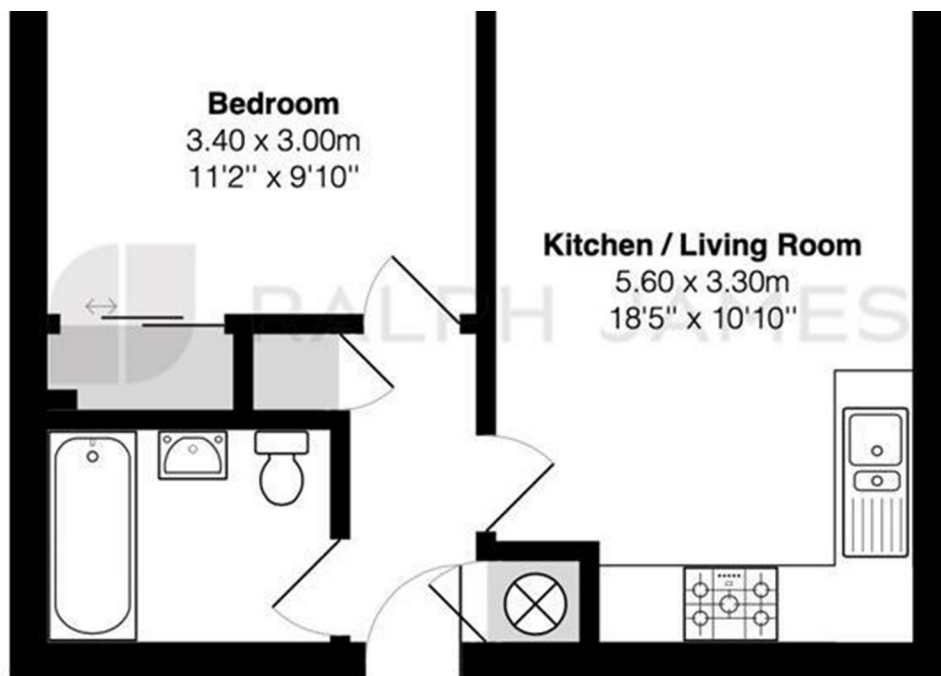
**\*\*PHOTOS AND MARKETING ARE FOR ILLUSTRATIVE PURPOSES ONLY\*\***

Ralph James is thrilled to present this modern double-bedroom apartment, situated on the third floor. Upon entering the property, a welcoming hallway guides you into the expansive open-plan living area, adorned with light oak effect wood laminate flooring. The kitchen is tastefully appointed with a sleek white high gloss base and wall units, and it comes fully equipped with integrated appliances, including an oven, vitroceramic hob, fridge/freezer, and washer/dryer.

The double bedroom offers both built-in wardrobes and plush-fitted carpets, ensuring comfort and ample storage space. The luxurious 'Roca' bathroom suite is a highlight, featuring a soothing monsoon shower, adorned with exquisite Porcelanosa tiling.

For added comfort and security, the property boasts triple-glazed windows throughout and a reliable video door entry system. Provided for convenience, an allocated parking space comes included.

This apartment truly exemplifies modern luxury living!



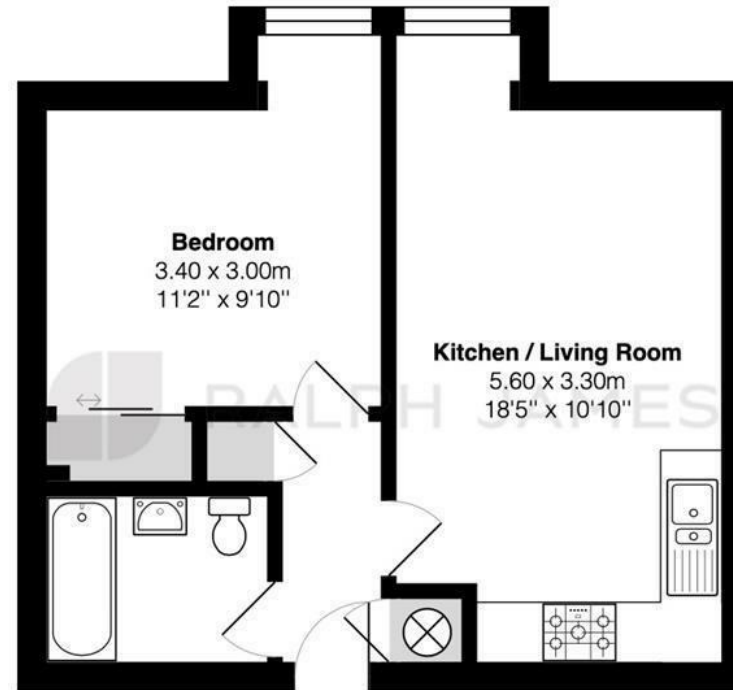
**Reigate Hill House, Reigate**

FOR ILLUSTRATIVE PURPOSES ONLY.

Whilst every attempt has been made to ensure the accuracy of the floor plan shown

## Need to know

- Large double bedroom flat
- Triple glazing throughout
- Allocated parking
- Open plan or separate layout options
- Brand new development
- Super fast broadband
- Smart controlled heating
- Central Reigate
- EPC B
- Council Tax: C



### Reigate Hill House, Reigate

FOR ILLUSTRATIVE PURPOSES ONLY.

Whilst every attempt has been made to ensure the accuracy of the floor plan shown, all measurements, positioning, fixtures, features, fittings and any other data shown are an approximate interpretation for illustrative purposes only and are not to scale.

No responsibility is taken for any error, omission, miss-statement or use of data shown.

The above statement applies to both 'Still Moving London LTD' and the Company or individual displaying this floor plan.

Unauthorised reproduction prohibited.

Â© Still Moving London LTD (www.stillmoving.london)

## Interested?

reigate@ralphjames.co.uk  
01737 333677

1

ralphjames.co.uk