



23 Hanworth Lane Chertsey Surrey KT16 9JX

£595,000



Hanworth Lane, Chertsey, Surrey, KT16

Approximate Area = 1264 sq ft / 117.3 sq m

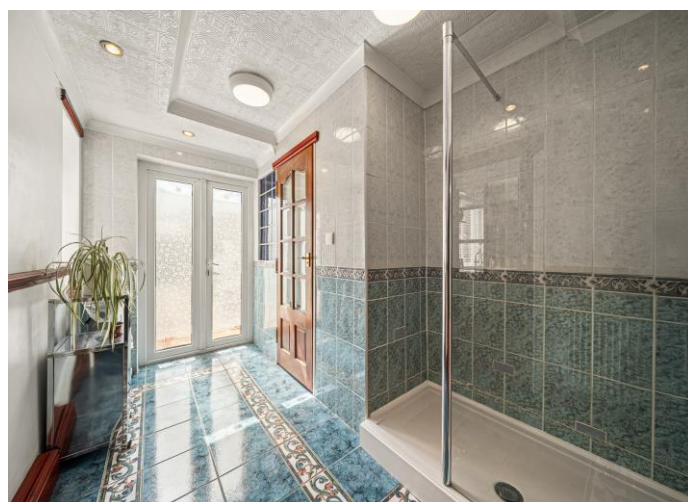
For Identification Only - Not to scale



Floor plan Produced in accordance with RICS Property Measurement 2nd Edition, Incorporating International Property Measurement Standards (IPMS2 Residential). Produced for James Neave Estate Agents.



This three-bedroom semi-detached home is nestled in a quiet, no-through road close to Chertsey Town Centre and the train station, offering a wonderful blend of convenience, peace, and immense future potential. Arriving at the property, you are greeted by a mature front garden alongside a private driveway providing off-street parking, which leads to a large integral garage. Inside, the home is presented immaculately throughout, bearing all the hallmarks of a property that has been incredibly well loved and cared for by the current owner. While the decor presents a more traditional feel and may not be super modern, it offers an exceptionally clean, comfortable, and welcoming environment to move straight into. A spacious front living room provides a relaxing space to unwind, while the heart of the home lies to the rear with a bright kitchen diner that opens directly onto the garden. This space flows seamlessly into a convenient downstairs shower room and toilet area, which also provides direct internal access into the garage. Upstairs, the property boasts three good-sized bedrooms, all featuring practical built-in storage. The family bathroom is located on this level, alongside access to a large loft space that is currently excellent for storage. One of the standout features of this property is its incredible scope for growth. It offers plenty of potential to extend into the loft, to the side, or to the rear, subject to the normal planning permissions, making it a perfect long-term investment for a buyer looking to put their own stamp on a house over time. Outside, the mature rear garden faces southeast, serving as a fantastic sun trap, and comes complete with a patio, lawn, and a summer house. Situated within easy reach of popular local schools, St Peter's Hospital, and the M25, this home is ideally positioned for modern family life. EPC Rating E.



AGENTS NOTES: These details do not constitute any part of an offer or contract. In issuing them we do not have any authority to give any warranty or representation whatsoever in respect of this property. These details are provided without any responsibility on our part or the part of the vendors. No statements in these details are to be relied upon as representations of fact and purchasers should satisfy themselves by inspection or otherwise as to the accuracy of the statements contained therein.

Equipment: We have not tested the equipment or central heating system mentioned in these particulars and purchasers are advised to satisfy themselves as to their working order and condition.

Measurements: Great care is taken when measuring but measurements should not be relied upon for ordering carpets, equipment, etc.