



**Guide Price**

**£280,000**

**Freehold**

2x  1x  1x 

**Sherbourne Drive,  
Barming, Maidstone,  
Kent ME16**

**OVER 60?**

Secure this property  
for up to **59% less!**

*Wards*  
Helping you move forwards



## Main features

- Perfect first time buy
- Set in a popular cul-de-sac location
- Open plan lounge/diner
- Double glazing and central heating
- Allocated parking bay for residents only

## Accommodation

### GROUND FLOOR

Entrance Porch

Lounge/Diner: 19'0 x 11'7 (5.80m x 3.53m)

Kitchen: 11'6 x 7'4 (3.51m x 2.24m)

Lean To: 9'8 x 7'7 (2.95m x 2.31m)

### FIRST FLOOR

Landing

Bedroom 1: 11'7 x 11'0 (3.53m x 3.36m)

Bedroom 2: 11'7 x 8'6 (3.53m x 2.59m)

Bathroom

### OUTSIDE

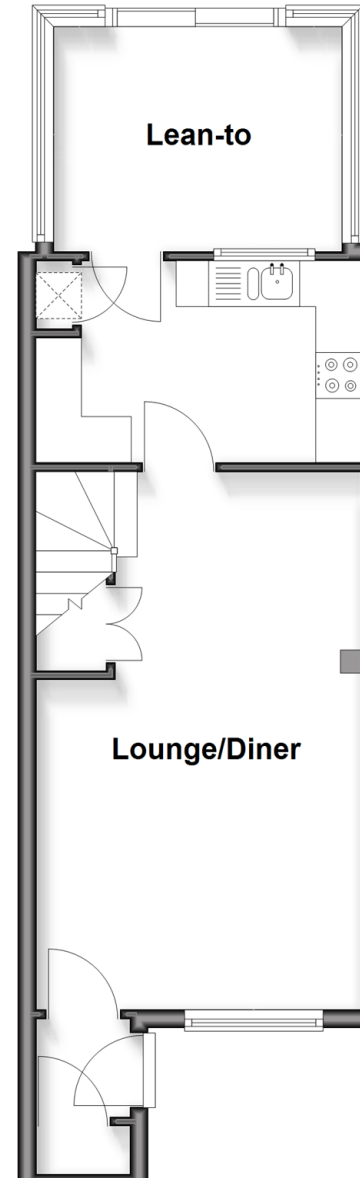
Rear Garden

Front Garden

Allocated Parking Bay

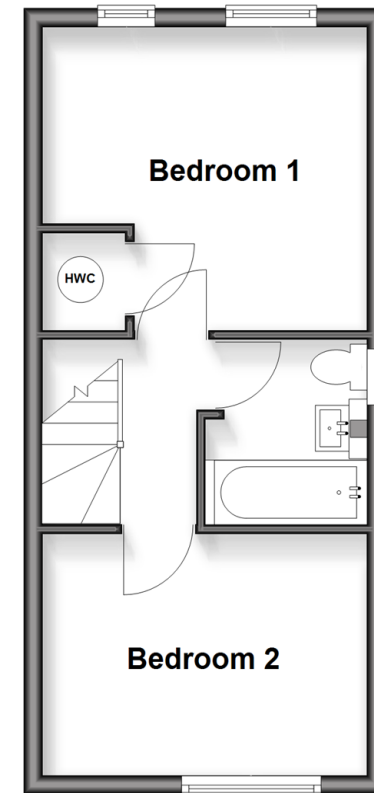
## Ground Floor

Approx. 39.1 sq. metres (420.5 sq. feet)



## First Floor

Approx. 29.1 sq. metres (313.6 sq. feet)



Call Maidstone - 01622 683737 ■ [wardsof Kent.co.uk](http://wardsof Kent.co.uk)

- Legal advice should be taken to verify fixtures/fittings, planning, alterations and/or lease details
- Appliances & services are untested, dimensions are approximate and floor plans are not to scale
- Through a Homewise Home For Life Plan people aged 60+ can secure this property for up to 59% less, by purchasing a Lifetime Lease



13159117/20260220/DS/DS