

Townmead Road, SW6

£500,000

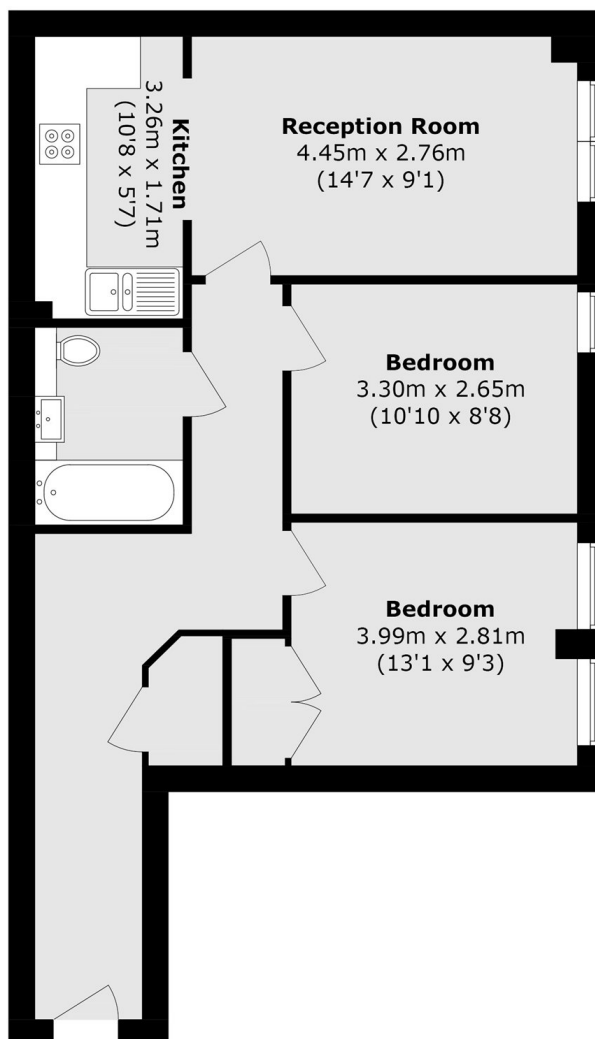
A well proportioned and spacious two double bedroom flat located on the third floor of a modern purpose built block benefiting from lift access. This contemporary and bright apartment is set within a popular riverside development benefiting from a 24 hour concierge, communal gardens, and access to a gym. The spacious open-plan kitchen and living room offers direct views over the communal gardens.

Nacovia House is located within a popular riverside development in Imperial Wharf, which sits on the banks of the River Thames on the border of Fulham and Chelsea. The property is next to Imperial Wharf Station and is within close proximity to Fulham Broadway. The King's Road in Chelsea and the River Thames are both only a short walk away, offering excellent local amenities, transport links, and riverside walks.

Features

- Two Double Bedrooms
- Open Plan Kitchen Living
- Third Floor Purpose Built Flat
- 24 Hour Concierge
- Communal Gardens and Gym
- Sold Chain Free

Townmead Road, London, SW6



Third Floor

Total Area (approx.): 56.3 sq. m (606.0 sq. ft)