



**50, MOUNT STUART DRIVE, WEMYSS
BAY, PA18 6DX**



 **neillclerk**
ESTATE AGENTS



Description

Enjoying a highly popular location this well presented and freshly decorated four bedroom DETACHED VILLA offers an impressive family home. A monoblock driveway provides essential off street parking for two cars & leads to the garage with light and power installed. Electric car charging point. The garage may offer future development potential, subject to permissions being granted.

The front garden features lawned plot. There is landscaped enclosed rear garden which backs onto woodland with paved patio which is a perfect space for relaxing on summer days plus lawn and well stocked borders. Garden shed. Specification includes: double glazing & gas central heating.

Lies close to local shops, transport facilities & the local primary school. Wemyss Bay offers a railway station with regular rail service to Glasgow, plus ferry to the Isle of Bute.

Impressive family accommodation comprises: Hall by UPVC double glazed door with side panel. The bright front facing Lounge features a 5 light box bay window formation. The Dining Room with French doors is a perfect space for entertaining and enjoys views over the rear garden to the woodland beyond.

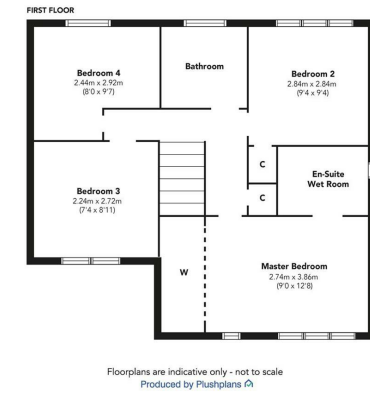
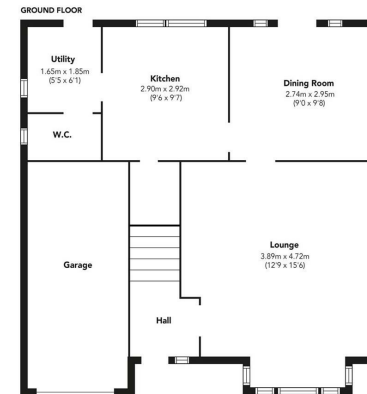
The Kitchen overlooks the garden and features soft cream fitted units, oak effect work surfaces and splashback tiling. Appliances include: stainless steel chimney extractor hood and gas cooker. The Utility Room with side window has a double glazed door to the rear garden plus dishwasher and fridge/freezer. There is a WC compartment with side window & quality two piece suite and heated towel rail.

Stairs lead to Upper Landing with cupboard and hatch to loft. The Master Bedroom features fitted wardrobes and benefits from an Ensuite Wet Room. There is a 2nd double Bedroom and two further single Bedrooms. The quality Bathroom with rear window features suite including: vanity wash hand basin, wc & shower bath with chrome style shower. Anthracite heated towel rail and wet wall panelling.

Viewing is essential. EPC=C

Measurements

Hallway
Lounge
3.89m x 4.72m (12'9" x 15'6")
Dining Room
2.74m x 2.95m (9'0" x 9'8")
Kitchen
2.90m x 2.92m (9'6" x 9'7")
Utility Room
1.65m x 1.85m (5'5" x 6'1")
Plumbed Cloakroom
Upper Landing
Master Bedroom
2.74m x 3.86m (9'0" x 12'8")
Ensuite Wet Room
Bedroom 2
2.84m x 2.84m (9'4" x 9'4")
Bedroom 3
2.24m x 2.72m (7'4" x 8'11")
Bedroom 4
2.44m x 2.92m (8'0" x 9'7")
Bathroom



Floorplans are indicative only - not to scale
Produced by Plushplans











The next step..



To view call 01475 888400. Speak to us 7 days a week until 11pm every day to book your viewing appointment.

House to sell or rent?

Call 01475 888400 to book your free market appraisal.

Require a solicitor?

Ask us to supply a free legal quotation from Neill Clerk & Murray, Solicitors.
www.neillclerkmurray.co.uk

Stay fully up-to-date by following Neill Clerk on:



**60 West Blackhall Street
Greenock
Renfrewshire
PA15 1UY**

t: 01475 888400

e: sales@neillclerk.co.uk

w: www.neillclerk.co.uk



Agents Notes:

These sales particulars are set out as a general outline only, issued in good faith, but do not constitute representations of fact and do not form part of any offer or contract. Any services, equipment, appliances, fittings or central heating systems have not been tested and no warranty is given or implied that these are in working order. All measurements are approximate and for guidance only.

Neither Neill Clerk Estate Agents nor any of its employees or agents has any authority to make or give any representation or warranty whatever in relation to this property.