



Northumberland Gardens

Isleworth, TW7

£385,000

This well presented two double bedroom ground floor maisonette is ideally located within a short walk of Syon Lane train station servicing London Waterloo, a choice of excellent local including the sought after Nishkam School and amenities. Offered to the market with no forward chain the property offers a welcoming hallway, a bright and spacious reception room, a large principal bedroom with built in wardrobes, second double bedroom with a built in wardrobe, modern kitchen and family bathroom. Externally the property offers a large private front garden and a private rear patio. Further benefits include a lease in excess of 900 years, low ground rent, zero service charge, double glazing and gas central heating.

- No Forward Chain
- Two Double Bedrooms
- Long Lease
- Private Garden
- Ample Internal Storage
- Close to Train Station
- Low Ground Rent & No Service Charge
- Well Presented

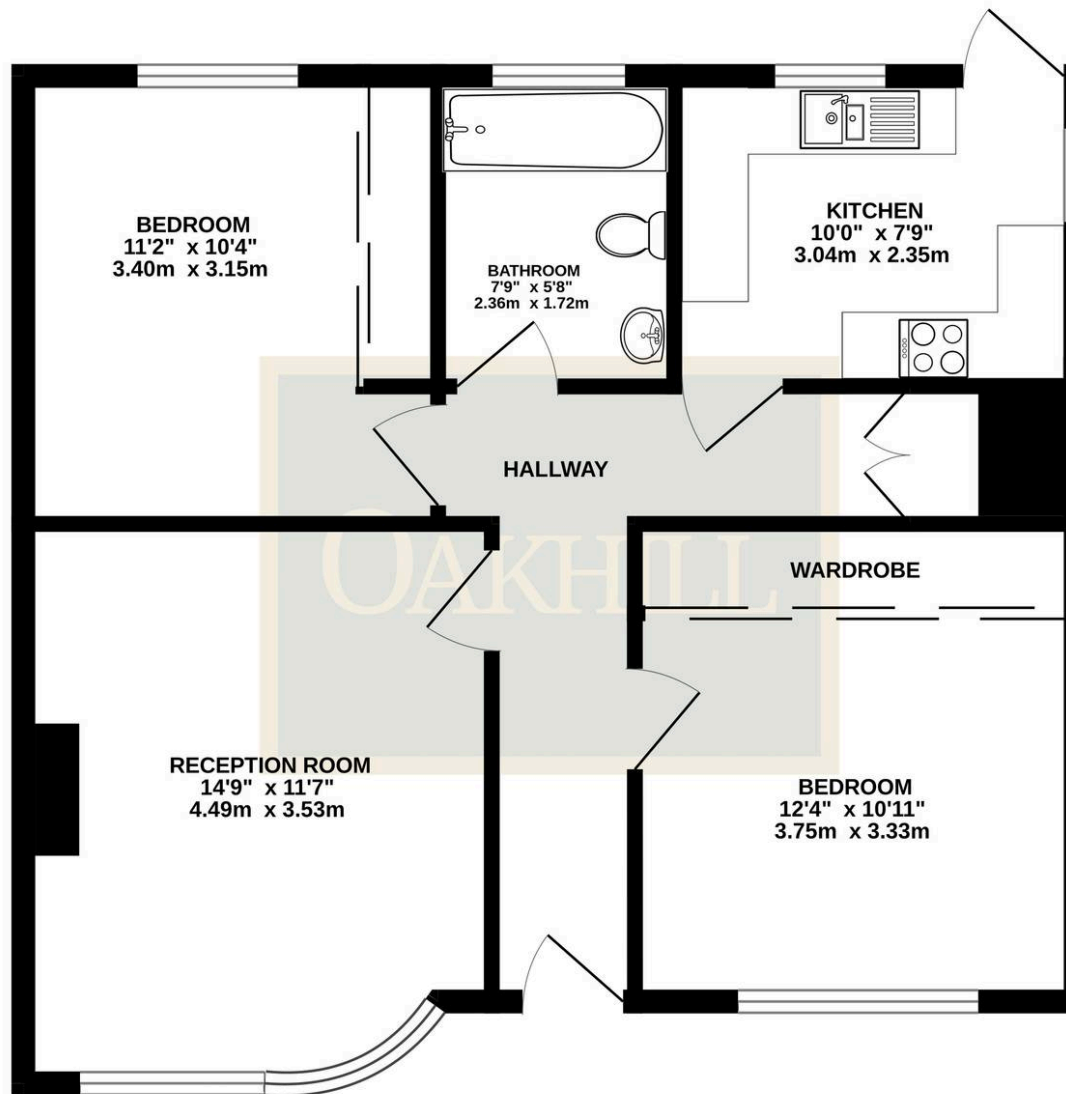


SCAN HERE
FOR
PROPERTY
DETAILS



OAKHILL

GROUND FLOOR



TOTAL FLOOR AREA: 495sq.ft. (46.0 sq.m.) approx.

Whilst every attempt has been made to ensure the accuracy of the floorplan contained here, measurements of doors, windows, rooms and any other items are approximate and no responsibility is taken for any error, omission or mis-statement. This plan is for illustrative purposes only and should be used as such by any prospective purchaser. The services, systems and appliances shown have not been tested and no guarantee as to their operability or efficiency can be given.
Made with Metropix ©2026

