






RIBSDEN HOLT

Chertsey Road, Windlesham, Surrey



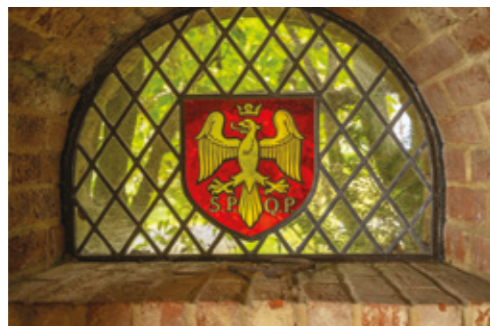
SET IN OVER 12 ACRES A LARGE COUNTRY HOUSE WITH FAR REACHING VIEWS

			EPC
7-9	7	5	G
			
12.82 acres			

Local Authority: Surrey Heath Borough Council

Council Tax band: H

Tenure: Freehold



DESCRIPTION

Ribsden Holt is approached via wrought iron entrance gates which open onto an exceptional driveway that winds gently up through the grounds. Bordering the drive are banks of rhododendrons, mature lawns and specimen trees. Approaching the front of the house, the eye is immediately drawn to the beautiful views southwards over miles of Surrey countryside to The North Downs. Views like these in this area are almost impossible to find. As you enter through an impressive front door the charm and character of Ribsden Holt is immediately apparent.

The reception hall and staircase are indeed rare examples of this style of architecture which continues throughout the house with beamed ceilings, polished wood floors, large open fireplaces, leaded light windows and fascinating interior latch doors.

The accommodation is laid out over four floors and the drawing room is particularly noteworthy being large enough to have a sitting area in front of a huge period fireplace, a bar area for guests and still have space for a grand piano. It also opens into the dining room so, combined, these rooms flow well for those who enjoy entertaining.



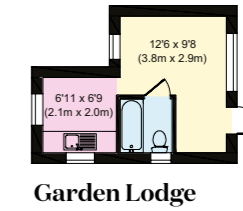
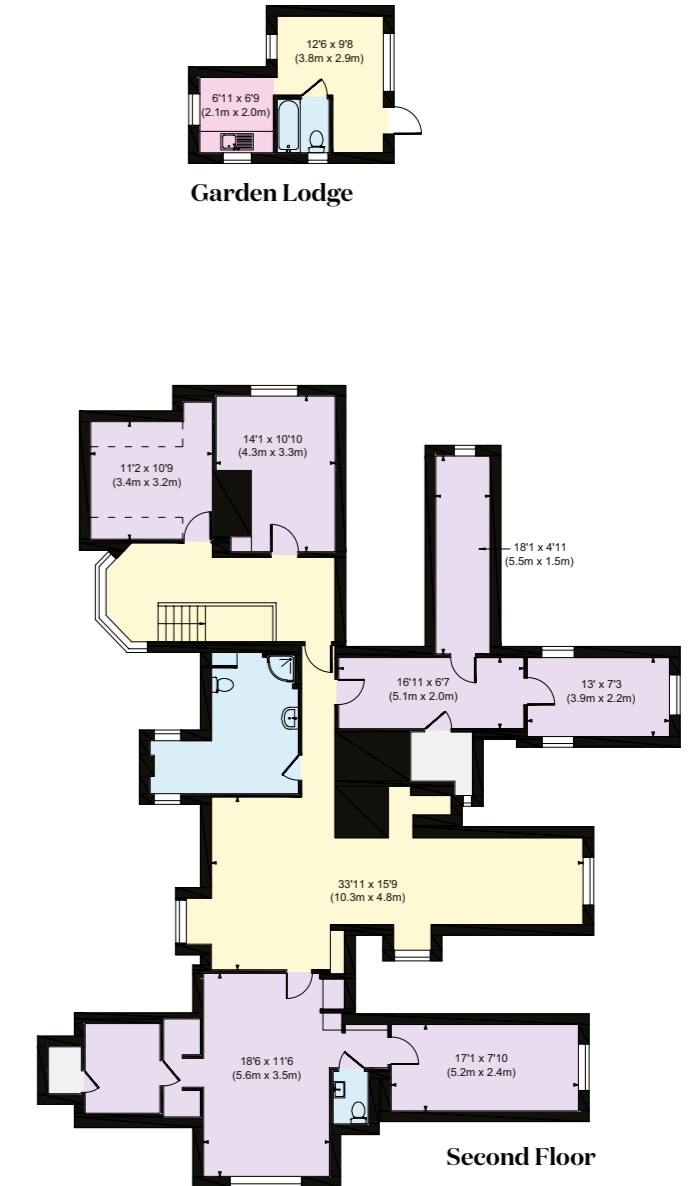
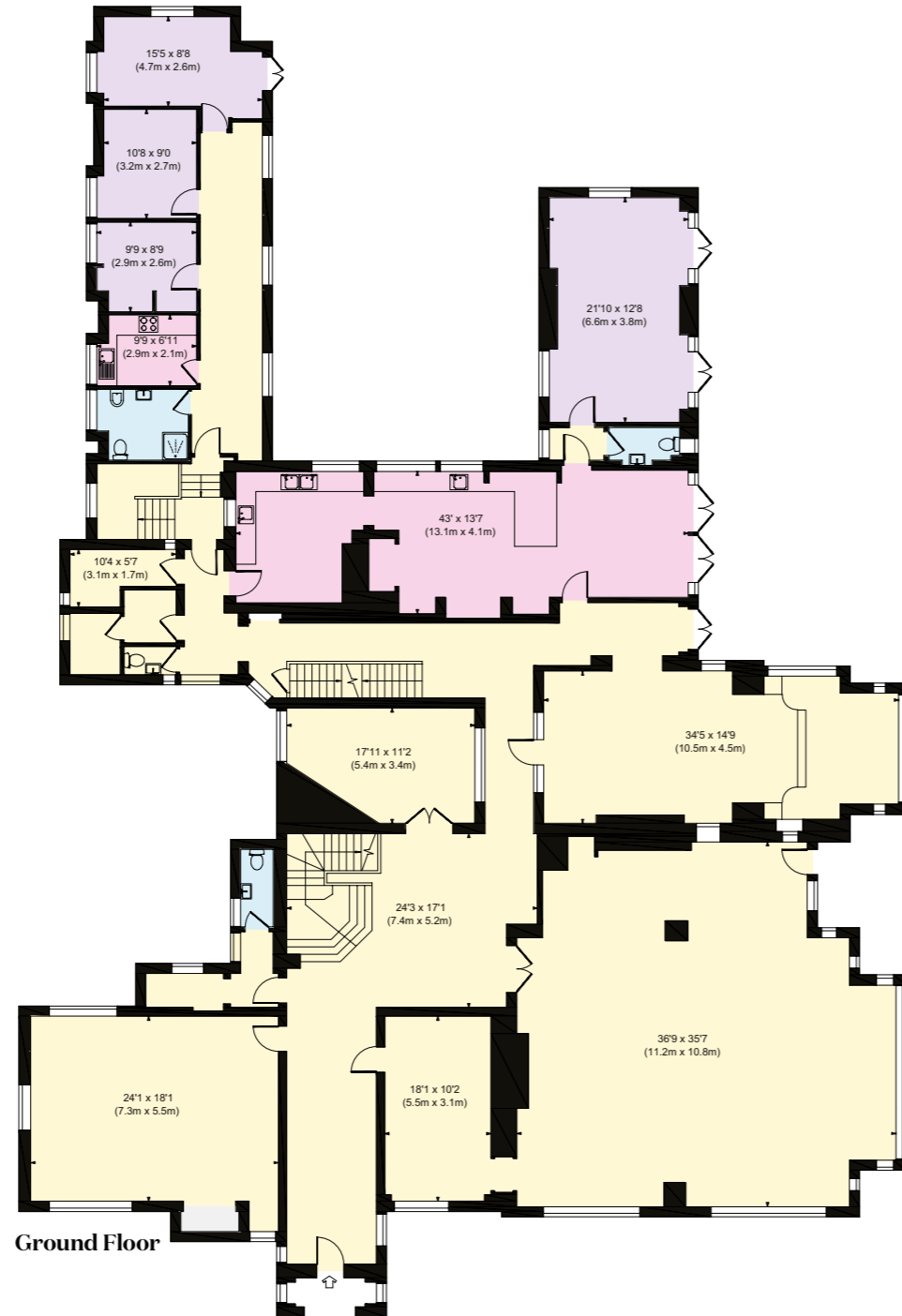
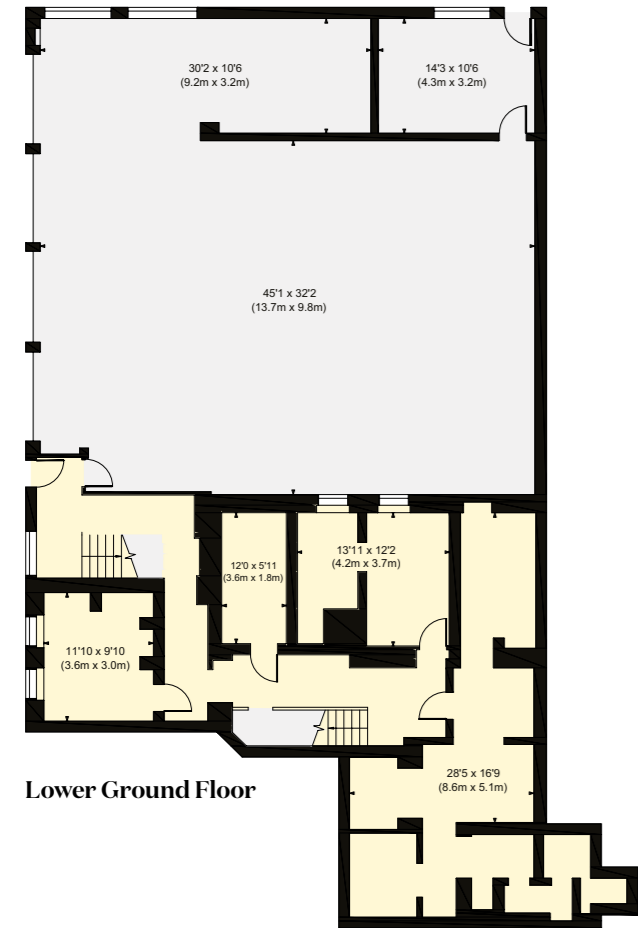


On the first floor the principal suite is equally impressive with double bay windows enjoying distant views, dual bathrooms and dressing rooms. There are three further suites on this floor, whilst the second floor offers additional bedrooms, sitting rooms and storage.

To the rear of the property, and accessed via a secondary staircase, there is a self-contained staff flat with two bedrooms, kitchen, sitting room and bathroom. The lower ground level is dedicated to garaging for ten cars, various storage rooms and large wine cellar.







- Reception
- Bedroom
- Bathroom
- Kitchen/Utility
- Storage
- Outside

Approximate Gross Internal Area = Main House 13,122 sq. ft / 1,218.99 sq. m
 Garage 1,776 sq. ft / 165.01 sq. m
 Garden Lodge 172 sq. ft / 16.00 sq. m
 Total 15,070 sq. ft / 1,400.00 sq. m

This plan is for layout guidance only. Not drawn to scale unless stated. Windows and door openings are approximate. Whilst every care is taken in the preparation of this plan, please check all dimensions, shapes and compass bearings before making any decisions reliant upon them.

OUTSIDE

The extensive grounds extend to approximately 12.82 acres and comprise a mixture of formal lawns and gardens, exceptional rhododendron plant beds, various mature specimen trees and a hillside pine woodland. A swimming pool and tennis court are set to one side of the formal gardens. There is a beautiful winding driveway that leads up through the gates to the house.

LOCATION

Situation Just 25 miles from Central London the property is situated on a leafy rural road, just on the edge of Sunningdale and Windlesham villages.

Conveniently located for access to the motorway network, with Junction 3 of the M3 being about 3.2 miles away. This connects with the M25 and provides good vehicular access to Central London, Heathrow and the West Country. It is worth noting that Farnborough Airport, an important hub for private aircraft, is only about 10 miles away.

The property is only about 2.5 miles from Sunningdale Station (Waterloo 50 minutes) and Waitrose supermarket. There are a number of good local shops in Windlesham and Sunningdale with Ascot offering a more comprehensive selection, including coffee shops and restaurants. The recently refurbished Brickmakers Pub, less than a quarter of a mile away, is highly regarded and has a great restaurant.

The area is ideal for those with sporting interests. There are several world renowned golf courses nearby including Sunningdale, Wentworth, Swinley, Queenwood and Foxhills. There is a choice of health and tennis clubs including Penny Hill Park and David Lloyd Royal Berkshire Health and Racquets club. Horse racing can be found at Royal Ascot and Windsor and several of the country's top Polo clubs are nearby. There is also the opportunity to walk from the property to Chobham Common which has some beautiful views over the surrounding countryside.

There is an excellent selection of both state and private schooling including Coworth Flexlands, Hall Grove, Woodcote House, Papplewick, St Mary's, St George's, St John's Beaumont and the American Community School. Wellington and Eton Colleges also provide excellent senior education locally.





We would be delighted to tell you more.

Edward Shaw
01344 293140
edward.shaw@knightfrank.com

Knight Frank Ascot & Virginia Water
59 High Street, Ascot
SL5 7HP

George Pratt
020 7861 1166
george.pratt@knightfrank.com

Knight Frank Country Department
55 Baker Street, London
W1U 8AN

knightfrank.co.uk

Your partners in property

Important Notice 1. Particulars: These particulars are not an offer or contract, nor part of one. You should not rely on statements given by Knight Frank in the particulars, by word of mouth or in writing ("information") as being factually accurate about the property, its condition or its value. Neither Knight Frank nor any joint agent has any authority to make any representations about the property, and accordingly any information given is entirely without responsibility on the part of Knight Frank. 2. Material Information: Please note that the material information is provided to Knight Frank by third parties and is provided here as a guide only. While Knight Frank has taken steps to verify this information, we advise you to confirm the details of any such material information prior to any offer being submitted. If we are informed of changes to this information by the seller or another third party, we will use reasonable endeavours to update this as soon as practical. 3. Photos, Videos etc: The photographs, property videos and virtual viewings etc. show only certain parts of the property as they appeared at the time they were taken. Areas, measurements and distances given are approximate only. 4. Regulations etc: Any reference to alterations to, or use of, any part of the property does not mean that any necessary planning, building regulations or other consent has been obtained. A buyer must find out by inspection or in other ways that these matters have been properly dealt with and that all information is correct. 5. Fixtures and fittings: A list of the fitted carpets, curtains, light fittings and other items fixed to the property which are included in the sale (or may be available by separate negotiation) will be provided by the Seller's Solicitors. 6. VAT: The VAT position relating to the property may change without notice. 7. To find out how we process Personal Data, please refer to our Group Privacy Statement and other notices at <https://www.knightfrank.com/legals/privacy-statement>.

Particulars dated March 2026. Photographs and videos dated March 2025. All information is correct at the time of going to print. Knight Frank is the trading name of Knight Frank LLP. Knight Frank LLP is a limited liability partnership registered in England and Wales with registered number OC305934. Our registered office is at 55 Baker Street, London W1U 8AN. We use the term 'partner' to refer to a member of Knight Frank LLP, or an employee or consultant. A list of members names of Knight Frank LLP may be inspected at our registered office. If you do not want us to contact you further about our services then please contact us by either calling 020 3544 0692, email to marketing.help@knightfrank.com or post to our UK Residential Marketing Manager at our registered office (above) providing your name and address. Brochure by wordperfectprint.com

