



Wyndmill Crescent, West Bromwich, B71 3RA - No Upward Chain

£122,500

🛏️ 2 🚿 1 🚗 1



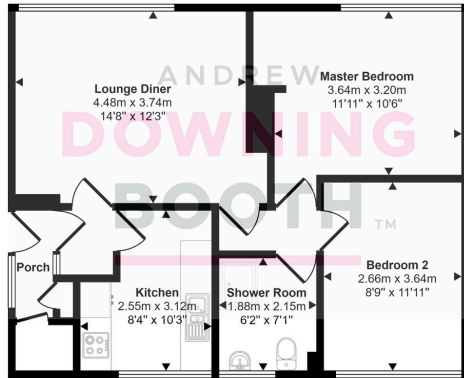
This two-bedroom maisonette with its own entrance on Wyndmill Crescent offers a fantastic opportunity for first-time buyers or investors, offered with no upward chain and an extended lease upon completion.

Conveniently located with beautiful views of a nature reserve, this delightful property provides easy access to local amenities, including shops, schools, and excellent public transport links, effortlessly connecting you to West Bromwich town centre and beyond. Residents will appreciate the communal garden space, offering a pleasant outdoor retreat.

Step inside to a welcoming entrance porch and hall, leading to a bright living room, a contemporary fitted kitchen, two comfortable bedrooms, and a modern family bathroom. Early viewing is highly recommended to fully appreciate the comfortable living spaces and potential this home offers.



Approx Gross Internal Area
61 sq m / 653 sq ft



Floorplan

This floorplan is only for illustrative purposes and is not to scale. Measurements of rooms, doors, windows, and any items are approximate and no responsibility is taken for any error, omission or mis-statement. Icons of items such as bathroom suites are representations only and may not look like the real items. Made with Made Snappy 360.

- Two Bedroom Flat
- No Upward Chain
- Low Service Charge & Extended Lease Upon Completion
- Two Spacious Bedrooms
- Fitted Kitchen
- Family Bathroom
- EPC Rating: C
- Council Tax Band: A

