

BRUNTON

RESIDENTIAL



DATALLER DRIVE, HAZLERIGG

£1,200 Per Month

BRUNTON

RESIDENTIAL





BRUNTON

RESIDENTIAL



BRUNTON

RESIDENTIAL



Available Now - Rent £1,200pcm - Unfurnished - 3 bed Miller Homes "Masterton" build semi-detached home - EPC B - CALL TODAY!

Brunton Residential are delighted to offer this excellent semi-detached home located on Dataller Drive in the ever-popular Oakwood Grange, Hazelrigg estate. This home is in fantastic condition throughout and has a stunning rear garden area and single garage.

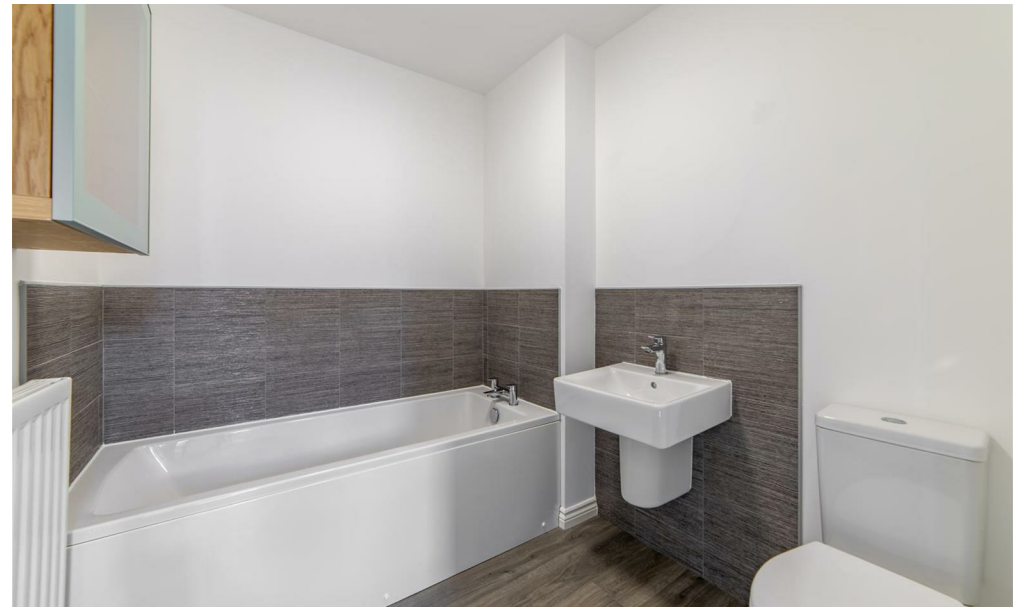
BRUNTON

RESIDENTIAL



BRUNTON

RESIDENTIAL



BRUNTON

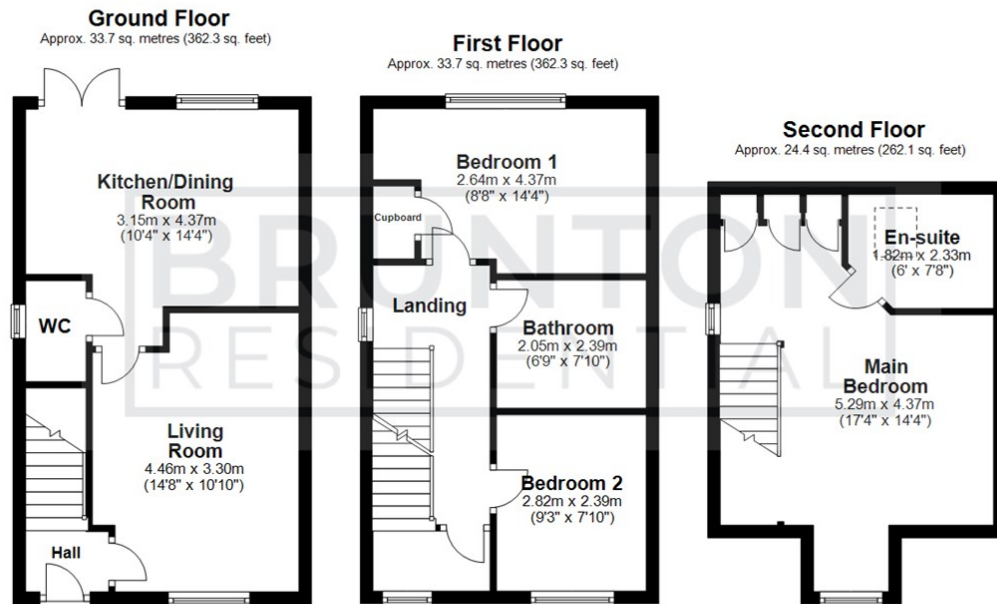
RESIDENTIAL

TENURE :

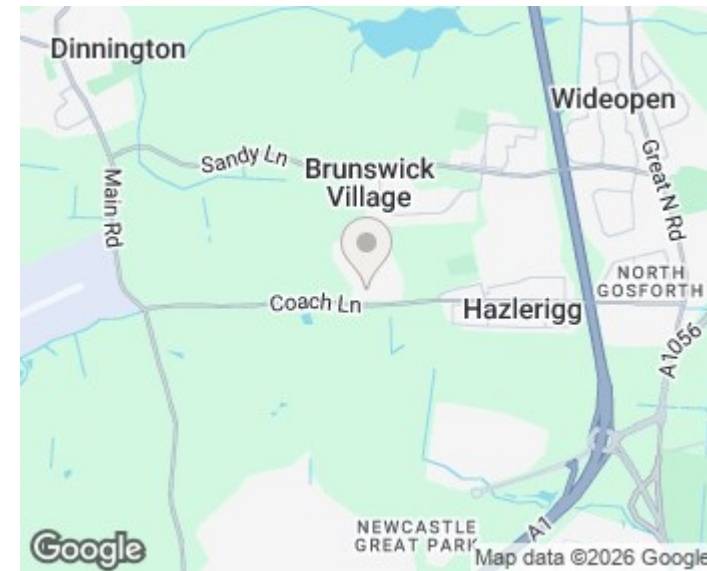
LOCAL AUTHORITY : Newcastle

COUNCIL TAX BAND : C

EPC RATING : B



All measurements are approximate and are for illustration only.
Plan produced using PlanUp.



Energy Efficiency Rating		Current	Potential
Very energy efficient - lower running costs			
(92 plus) A			96
(81-91) B		84	
(69-80) C			
(55-68) D			
(39-54) E			
(21-38) F			
(1-20) G			
Not energy efficient - higher running costs			
England & Wales		EU Directive 2002/91/EC	

Environmental Impact (CO ₂) Rating		Current	Potential
Very environmentally friendly - lower CO ₂ emissions			
(92 plus) A			
(81-91) B			
(69-80) C			
(55-68) D			
(39-54) E			
(21-38) F			
(1-20) G			
Not environmentally friendly - higher CO ₂ emissions			
England & Wales		EU Directive 2002/91/EC	