



Ffordd Y Mileniwm, £160,000

- COUNCIL TAX BAND - B
- 2 DOUBLE BEDROOMS - UPGRADES THROUGHOUT
- CLOSE TO JACKSON BAY, BARRY ISLAND, TRAIN STATION & GOODSHEDS
- WATERFRONT LOCATION
- ALLOCATED PARKING TO REAR
- ENSUITE & FAMILY BATHROOM
- EPC Rating: B



 2  1  1



About the property

Close to local amenities; The Goodsheds development, Barry Island, Jacksons Bay, parks, shops, supermarkets, Ysgol Sant Baruc, Barry Island Primary School, train station, bus routes, easy access to link roads leading to M4 corridor. *Water Front Location*

Accommodation

Communal Entrance

Wall mounted post boxes for individual apartments, telecom system for guests/ trade, automatic lighting, fitted carpet, stairs ascending to upper floors.

Inner Hallway

Security fire door, wall mounted telecom system, power points, radiator, wood effect cushioned vinyl flooring, doors leading into all apartment accommodation;-

Kitchen/Living Room



21' 5" max x 10' 2" (6.53m max x 3.10m)

T.V. point, power points, radiator, continuation of wood effect cushioned vinyl flooring, window to side and rear aspect. Matching wall and base units with complimentary work tops, fitted breakfast bar, inset sink, drainer and mixer tap, inset gas hob, oven and over head cooker hood, space for tall fridge freezer, space for washing machine, concealed combi boiler, ceramic splash back tiled areas, power points.

Bedroom One

12' 5" x 8' 6" (3.78m x 2.59m)

Spacious double bedroom. Fitted carpet, power points, radiator, window to front aspect, door leading into En Suite:-

En Suite

W.C., wash hand basin, double shower cubicle, radiator, splash back tiled areas, cushioned vinyl flooring.

Bedroom Two

11' 5" x 10' 6" (3.48m x 3.20m)

Double bedrooms. Wood effect cushioned vinyl flooring, power points, radiator, window to rear aspect. *Space for Home Office if required*

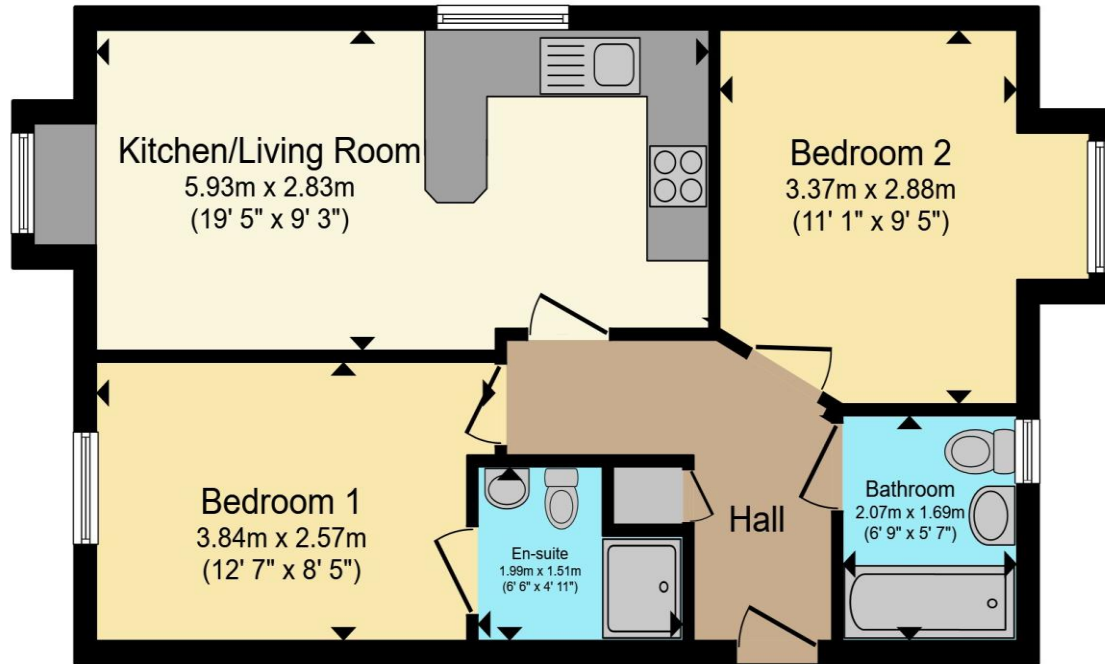
Family Bathroom

W.C., wash hand basin, bath with shower attachment, splash back tiled areas, radiator, wood effect cushioned vinyl flooring. radiator. window to side aspect.

01446 733224

barry@peteralan.co.uk

Floorplan



Total floor area 50.6 m² (544 sq.ft.) approx

This floor plan is for illustrative purposes only. It is not drawn to scale. Any measurements, floor areas (including any total floor area), openings and orientation are approximate. No details are guaranteed, they cannot be relied upon for any purpose and they do not form part of any agreement. No liability is taken for any error, omission or misstatement. A party must rely upon its own inspection(s). Powered by www.propertybox.io

Important Information

Note while we endeavour to make our sales details accurate and reliable, if there is any point which is of particular interest to you, please contact the office and we will be pleased to confirm the position for you. We have not personally tested any apparatus, equipment, fixtures, fittings or services and cannot verify they are in working order or fit for their purposes. Nothing in these particulars is intended to indicate that carpets or curtains, furnishings or fittings, electrical goods (whether wired or not). Gas fires or light fittings or any other fixtures not expressly included form part of the property offered for sale. This computer generated Floorplan, if applicable, is intended as a general guide to the layout and design of the property. It is not to scale and should not be relied upon for dimensions. Tenure: We cannot confirm the tenure of the property as we have not had access to the legal documents. The buyer is advised to obtain verification from their solicitor or surveyor.

Peter Alan Limited is registered in England and Wales under company number 2073153, Registered Office is Cumbria House, 16-20 Hockliffe Street, Leighton Buzzard, Bedfordshire, LU7 1GN. VAT Registration Number is 500 2481 05. For activities relating to regulated mortgages and non-investment insurance contracts, Peter Alan Limited is an appointed representative of Connells Limited which is authorised and regulated by the Financial Conduct Authority. Connells Limited's Financial Services Register number is 302221. Most buy-to-let