



Price

£102,000

Leasehold

2x  1x  1x 

Plot 8, Acorn Avenue, Newport, Isle of
Wight, PO30 5DE

cubitt & west
Helping you move forwards

Main features

- Two spacious double bedrooms
- Large open-plan kitchen and dining area
- Separate living room
- Downstairs WC
- Modern family bathroom
- Private rear garden
- Two allocated parking spaces

Accommodation

GROUND FLOOR

Entrance Hall

Kitchen/ Dining Room : 15'1 x 9'8
(4.60m x 2.95m)

Living Room : 15'1 x 10'5 (4.60m x 3.18m)

Downstairs Cloakroom

FIRST FLOOR

Bedroom 1 : 15'1 x 11'4 (4.60m x 3.46m)

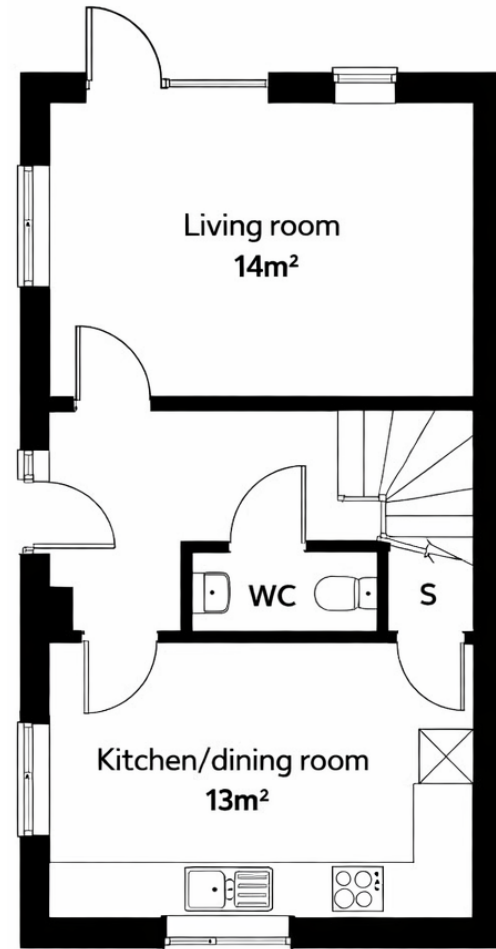
Bathroom

Bedroom 2 : 15'1 x 10'2 (4.60m x 3.10m)

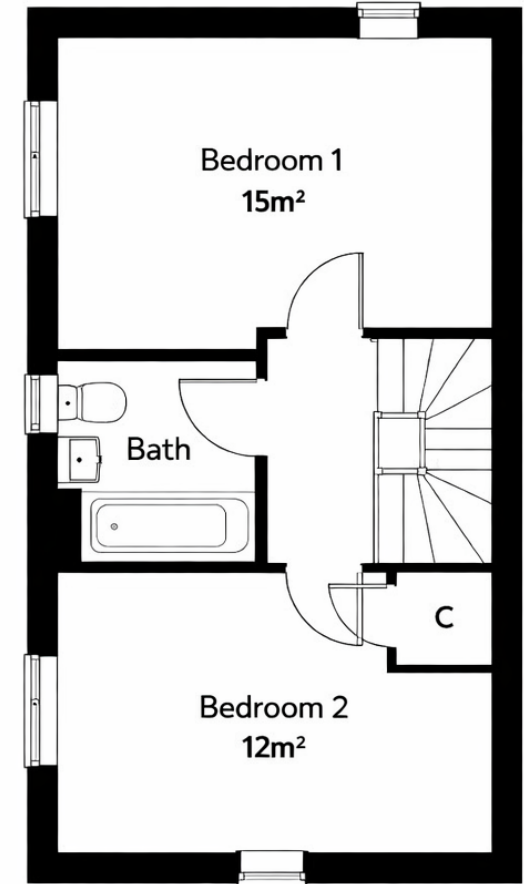
OUTSIDE

Allocated Parking

Private Rear Garden



Ground floor



First floor

Unable to display material information. Please check with the branch for material information details for this property