

# MATTHEW JAMES

Residential Sales • Lettings • Management



Flat 7 Staveley Varndell Street, London, NW1 3RL

**Asking Price £239,950**

A bright, airy first floor studio flat, excellently located close to London Euston and St Pancras International Stations and within a few minutes walk of the wide open green spaces of Regents Park. Mornington Crescent and Camden Town with its famous bustling market are a short walk to the north and there are great transport options available in close proximity, including Underground, Overground and bus route options in all directions, giving speedy access to the City, West End and beyond. Chain Free.

## First Floor

Accessed via a communal entrance hallway and staircase.

## Entrance Lobby

Features include a fitted carpet and entry phone system

## Studio Room



A good sized bright studio room with a fitted carpet, double glazed casement windows to the rear of the building overlooking communal gardens, radiator, TV, telephone and media points. Opening to....

## Kitchen



Comprising of white wall and base units with stainless steel fittings and wooden worktops, incorporating a white porcelain sink and mixer tap, spaces for a washing machine and fridge, double glazed casement window to the front of the building, Vaillant Combi boiler, linoleum flooring, a pod of spotlights and radiator.

## Bathroom



A white suite with chrome fittings comprising of a panel enclosed bath with a wall mounted shower fitting and mixer tap, wall mounted wash basin, low flush WC, frosted double glazed casement window to the front of the building, built-in storage cupboard, part tiled walls, linoleum flooring and radiator.

## Exterior



Communal garden.

## Additional Information

Leasehold - 125 years from 14/09/2000

Service Charge 2025-26 - 1548.03pa

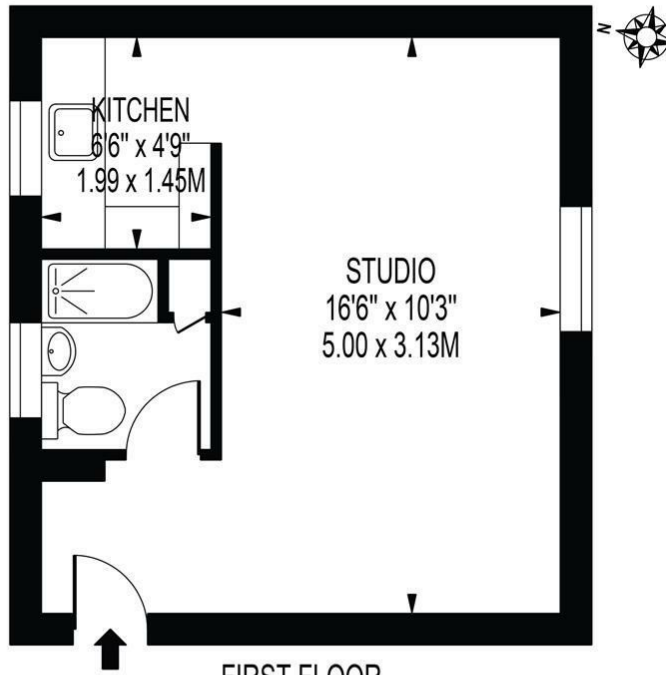
Ground Rent £10pa

Council Tax - Camden Band A

# Floor Plan

## STAVELEY

APPROXIMATE GROSS INTERNAL FLOOR AREA: 264 SQ FT - 24.55 SQ M

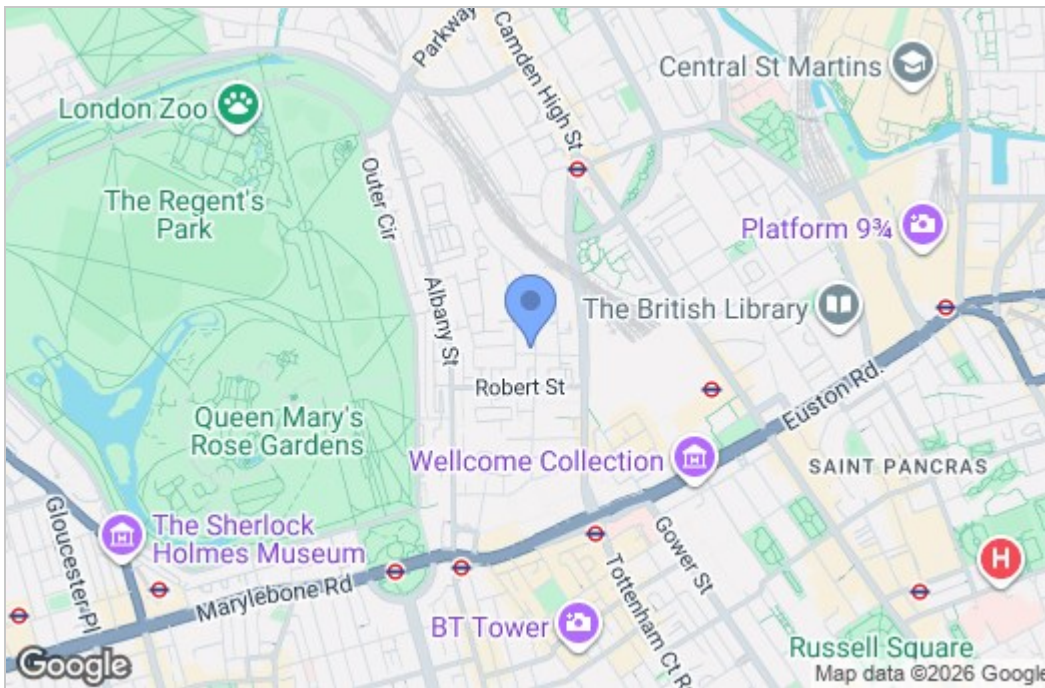


### FIRST FLOOR

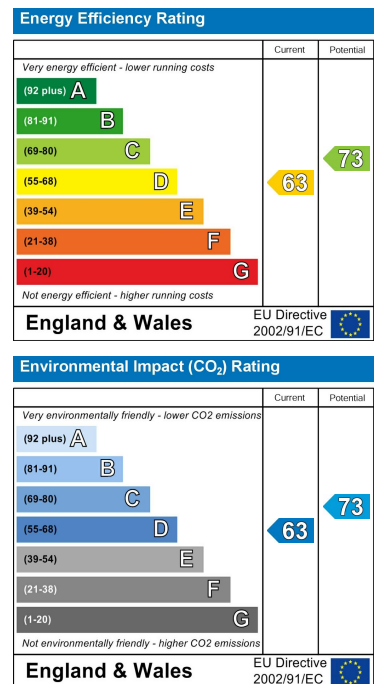
FOR ILLUSTRATION PURPOSES ONLY

THIS FLOOR PLAN SHOULD BE USED AS A GENERAL OUTLINE FOR GUIDANCE ONLY AND DOES NOT CONSTITUTE IN WHOLE OR IN PART AN OFFER OR CONTRACT. ANY INTENDING PURCHASER OR LESSEE SHOULD SATISFY THEMSELVES BY INSPECTION, SEARCHES, ENQUIRIES AND FULL SURVEY AS TO THE CORRECTNESS OF EACH STATEMENT. ANY AREAS, MEASUREMENTS OR DISTANCES QUOTED ARE APPROXIMATE AND SHOULD NOT BE USED TO VALUE A PROPERTY OR BE THE BASIS OF ANY SALE OR LET.

# Area Map



# Energy Efficiency Graph



These particulars, whilst believed to be accurate are set out as a general outline only for guidance and do not constitute any part of an offer or contract. Intending purchasers should not rely on them as statements of representation of fact, but must satisfy themselves by inspection or otherwise as to their accuracy. No person in this firm's employment has the authority to make or give any representation or warranty in respect of the property.

43- 45 Fortess Road, Kentish Town, London, NW5 1AD

Tel: 020 7284 4343 Email: als@matthewjames.co.uk www.matthewjames.co.uk