



**Connells**

Houghton Road  
Dunstable



### Property Description

\* NO UPPER CHAIN\* \*OFF ROAD PARKING\* \*GOODSIZE REAR GARDEN\* EXCELLENT A5/M1 COMMUTER ACCESS\*

Accommodation comprises; entrance hall, lounge, dining area, kitchen and utility room. The first floor comprises; landing, three goodsize bedrooms and family bathroom. Outside the property boasts, off road parking for two cars and a goodsize rear garden.

Alongside this the property benefits from a desirable location featuring easy access to the A5/M1 for commuter links whilst still being close to good schools and local amenities.

### Entrance Hall

### Cloakroom

WC, wash hand basin

### Lounge

Laminate flooring, radiator, bay window to side aspect.

### Kitchen

Tiled flooring, fitted kitchen, wall and base units, integrated oven and hob, cooker-hood, splash back wall, one bowl stainless steel sink and drainer, window to rear aspect.

### Dining Area

Laminate flooring, door to side aspect, radiator

### Utility Room

Work top, space for washing machine & tumble dryer, door out to rear garden and window to rear aspect.

### Landing

### Bedroom One

Laminate flooring, radiator, window to side aspect

### Bedroom Two

Laminate flooring, radiator, window to side aspect.

### Bedroom Three

Laminate flooring, radiator, window to rear aspect.

### Shower Room

Double walk-in shower, tiled floor to ceiling, WC, wash hand basin, heated towel rail, window to rear aspect.

## Outside

### Front Garden

Paved, driveway parking.

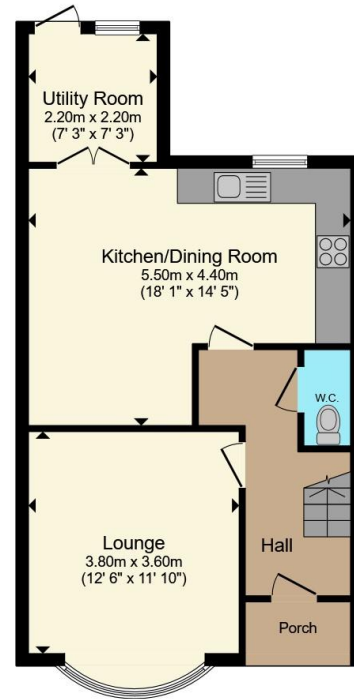
### Rear Garden

Laid to lawn, paved pathway and patio area.

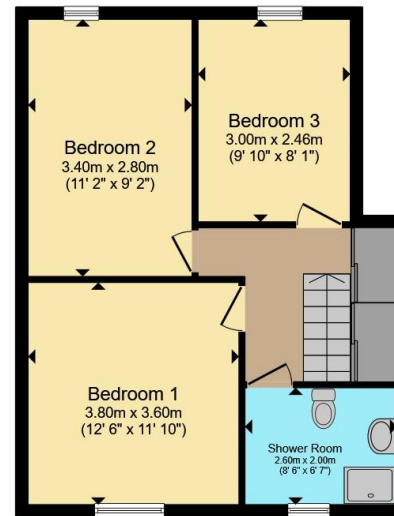








**Ground Floor**



**First Floor**

Total floor area 101.2 m<sup>2</sup> (1,090 sq.ft.) approx

This floor plan is for illustrative purposes only. It is not drawn to scale. Any measurements, floor areas (including any total floor area), openings and orientation are approximate. No details are guaranteed, they cannot be relied upon for any purpose and they do not form part of any agreement. No liability is taken for any error, omission or misstatement. A party must rely upon its own inspection(s). Powered by [www.propertybox.io](http://www.propertybox.io)



To view this property please contact Connells on

**T 01582 661 265**

**E [dunstable@connells.co.uk](mailto:dunstable@connells.co.uk)**

19 High Street North  
DUNSTABLE LU6 1HX

EPC Rating: D Council Tax  
Band: B

Tenure: Freehold

**view this property online [connells.co.uk/Property/DUN312246](http://connells.co.uk/Property/DUN312246)**



1. MONEY LAUNDERING REGULATIONS Intending purchasers will be asked to produce identification documentation at a later stage and we would ask for your co-operation in order that there will be no delay in agreeing the sale. 2. These particulars do not constitute part or all of an offer or contract. 3. The measurements indicated are supplied for guidance only and as such must be considered incorrect. Potential buyers are advised to recheck measurements before committing to any expense. 4. We have not tested any apparatus, equipment, fixtures, fittings or services and it is in the buyers interest to check the working condition of any appliances.

Connells Residential is registered in England and Wales under company number 1489613, Registered Office is Cumbria House, 16-20 Hockliffe Street, Leighton Buzzard, Bedfordshire, LU7 1GN. VAT Registration Number is 500 2481 05.

**See all our properties at [www.connells.co.uk](http://www.connells.co.uk) | [www.rightmove.co.uk](http://www.rightmove.co.uk) | [www.zoopla.co.uk](http://www.zoopla.co.uk)**

Property Ref: DUN312246 - 0004