

**RUSH  
WITT &  
WILSON**



**3 Wilton Court Mansions Marina, Bexhill-On-Sea, East Sussex TN40 1BJ  
Offers In Excess Of £295,000 Leasehold**

## About this property

A very special sea facing apartment, situated on the third floor, with stair and lift access available, spanning over 1300SqFt, comprising large entrance hallway, stunning open plan living / dining room, both coming with bay windows with panoramic sea views from east to west, reaching as far as Beachy Head, fitted kitchen / breakfast room, three bedrooms, with the main also benefitting from panoramic sea views, separate w.c and bathroom suite. Other internal benefits include gas central heating system and double glazed windows and doors throughout.

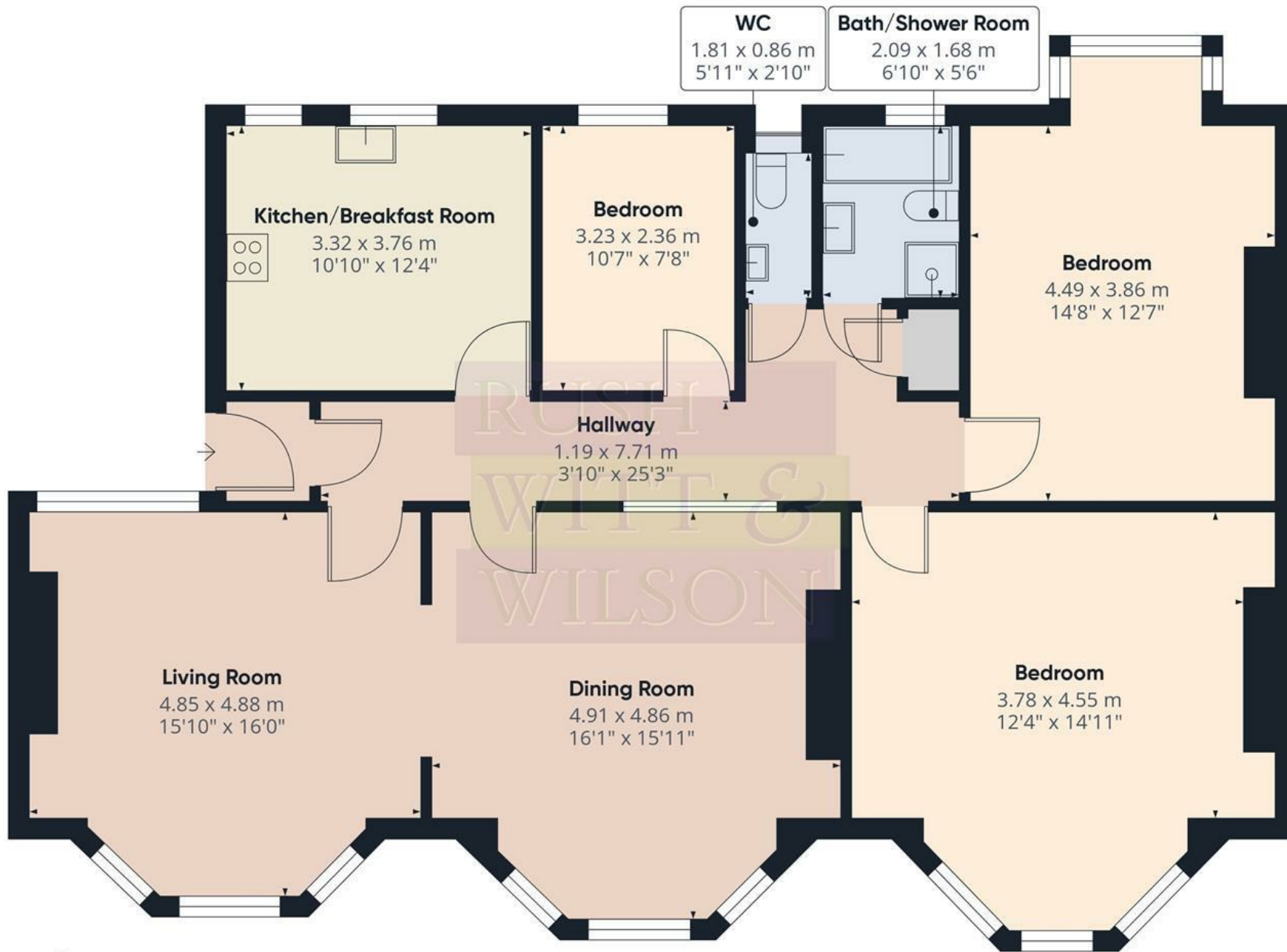
The property comes positioned along Bexhill's picturesque seafront & Bexhill's Town Centre, which offers a wide range of local amenities, a short walk to Bexhill Train Station, which offers direct links to London Victoria & Ashford International, short walk to the famous De La Warr Pavilion and Egerton Park.

Viewing comes highly recommended by Rush, Witt & Wilson Bexhill to enjoy this spectacular seafront apartment and to experience seafront living at its finest!









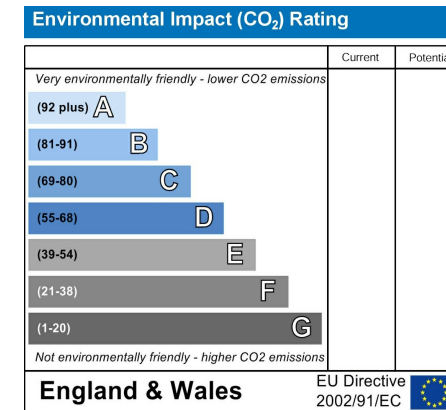
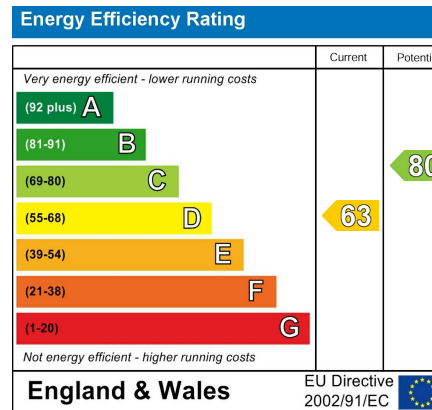
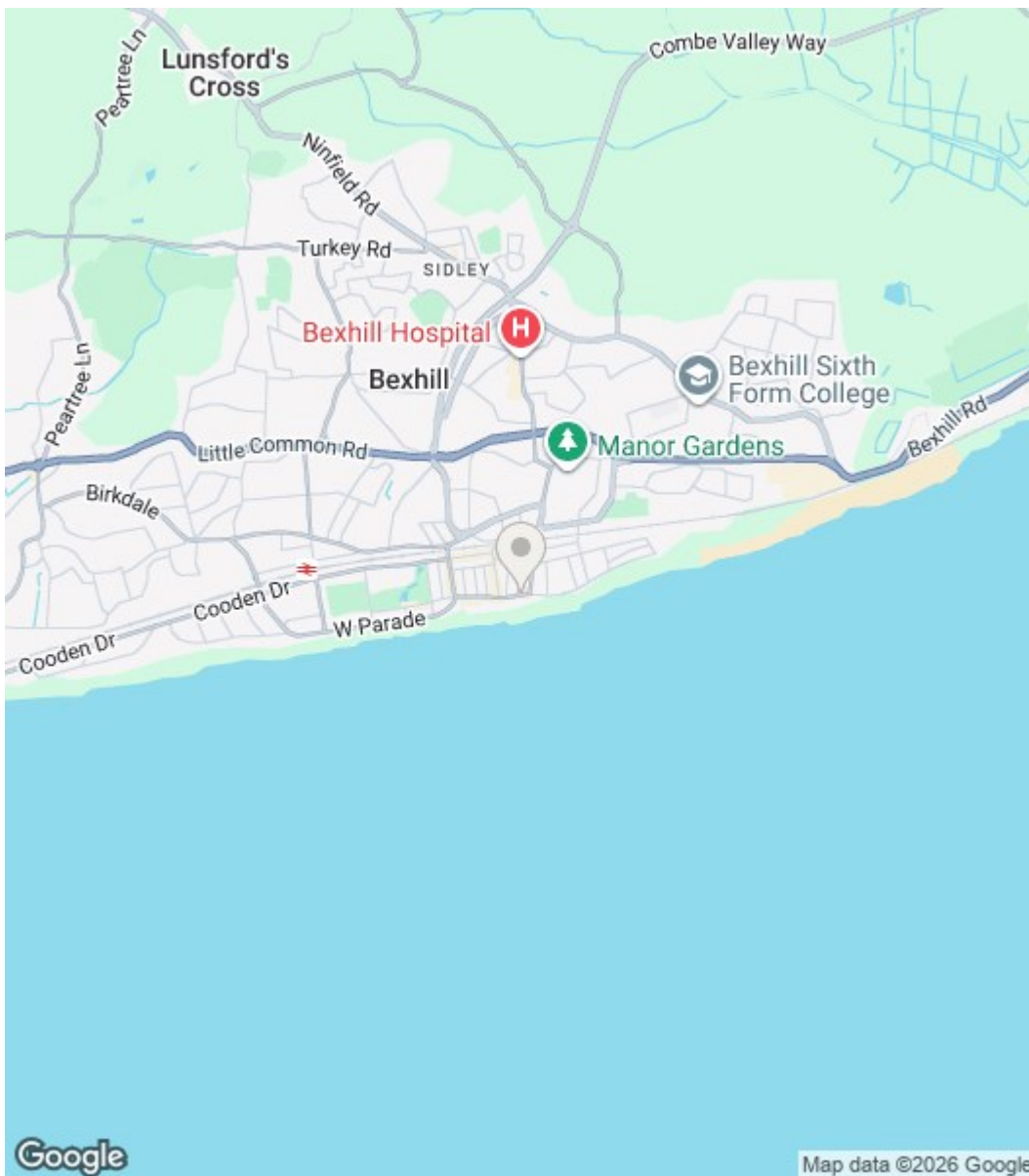
**Approximate total area<sup>(1)</sup>**  
121 m<sup>2</sup>  
1303 ft<sup>2</sup>

(1) Excluding balconies and terraces

Calculations reference the RICS IPMS 3C standard. Measurements are approximate and not to scale. This floor plan is intended for illustration only.

**GIRAFFE360**





Council Tax Band - D

Fixtures and fittings: A list of the fitted carpets, curtains, light fittings and other items fixed to the property which are included in the sale (or may be available by separate negotiation) will be provided by the Seller's Solicitors.

Important Notice:

1. Particulars: These particulars are not an offer or contract, nor part of one. You should not rely on statements by Rush, Witt & Wilson in the particulars or by word of mouth or in writing ("information") as being factually accurate about the property, its condition or its value. Neither Rush, Witt & Wilson nor any joint agent has any authority to make any representations about the property, and accordingly any information given is entirely without responsibility on the part of the agents, seller(s) or lessor(s).
2. Photos, Videos etc: The photographs, property videos and virtual viewings etc. show only certain parts of the property as they appeared at the time they were taken. Areas, measurements and distances given are approximate only.
3. Regulations etc: Any reference to alterations to, or use of, any part of the property does not mean that any necessary planning, building regulations or other consent has been obtained. A buyer or lessee must find out by inspection or in other ways that these matters have been properly dealt with and that all information is correct.
4. VAT: The VAT position relating to the property may change without notice.
5. To find out how we process Personal Data, please refer to our Group Privacy Statement and other notices at <https://rushwittwilson.co.uk/privacy-policy>



Residential Estate Agents  
Lettings & Property Management



3 Devonshire Road  
Bexhill-on-Sea  
East Sussex  
TN40 1AH  
Tel: 01424 225588  
[bexhill@rushwittwilson.co.uk](mailto:bexhill@rushwittwilson.co.uk)  
[www.rushwittwilson.co.uk](http://www.rushwittwilson.co.uk)