



Principal Place, EC2A

£1,150,000

A two double bedroom, two bathroom apartment in Principal Tower with unobstructed west-facing views. The apartment comprises two large double bedrooms, one with en-suit, a family bathroom and an open plan kitchen/living room that leads onto the private balcony.

Principle Tower is one of the area's most sought-after residential developments, in part due to features including the 24-hour concierge, residents' gym, pool, sauna and steam room, as well as communal meeting areas.

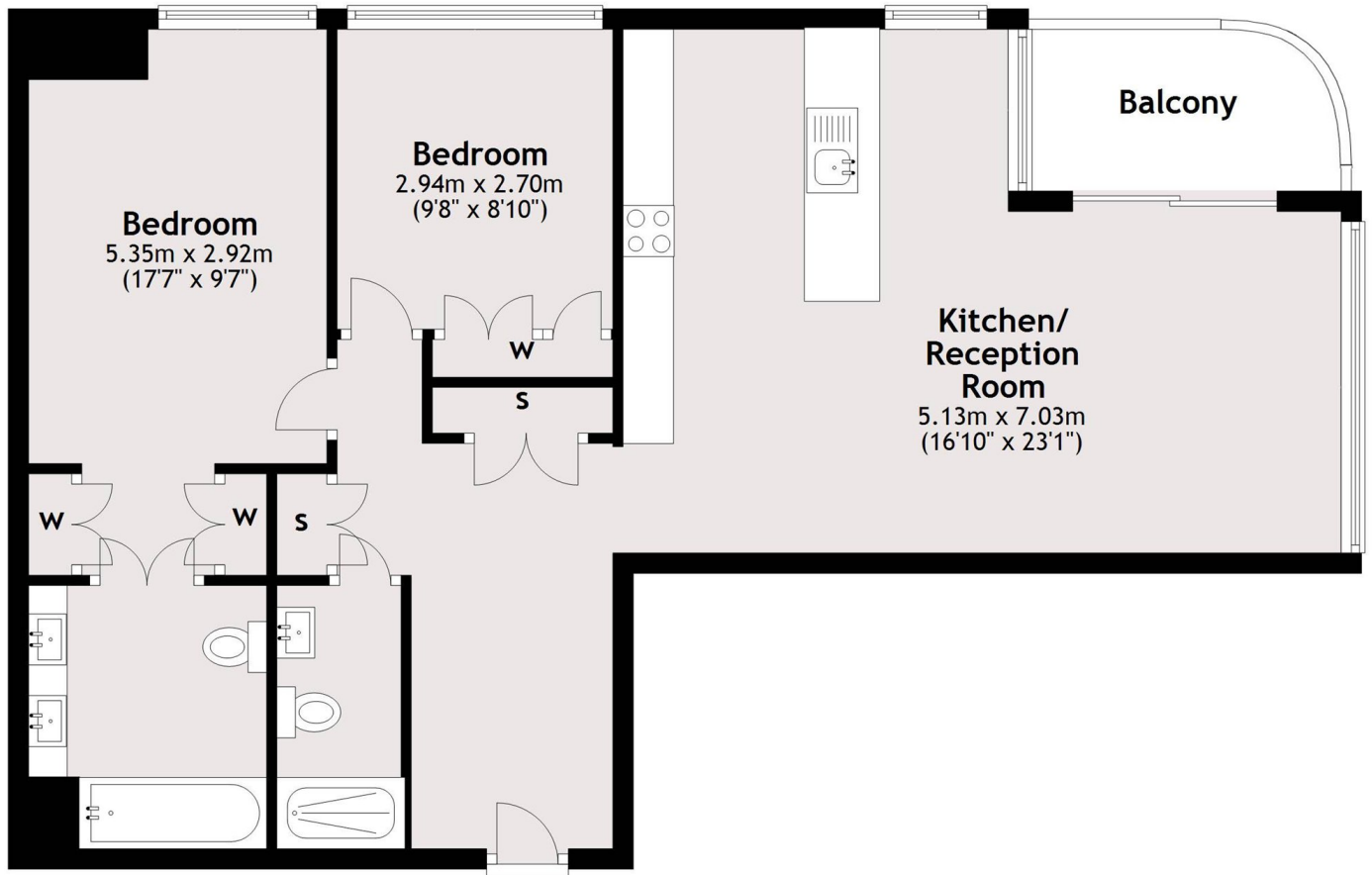
Principal Tower is on the fringe of the City, just moments from Liverpool Street Station and Shoreditch High Street Overground. The development is also very close to a number of popular bars and restaurants in the area, as well as Spitalfields Market.

Features

- Two Double Bedrooms
- Two Bathroom
- Balcony
- 21st Floor
- Health Club
- Concierge

Principal Place,
London, EC2A

Twenty First Floor



Main area: Approx. 76.7 sq. metres (825.6 sq. feet)
Plus balconies, approx. 4.5 sq. metres (48.8 sq. feet)