



PROPERTY
SERVICES
LIMITED



106A Warwick Street , Leamington Spa, CV32 4QP

£3,000 Per Calendar Month



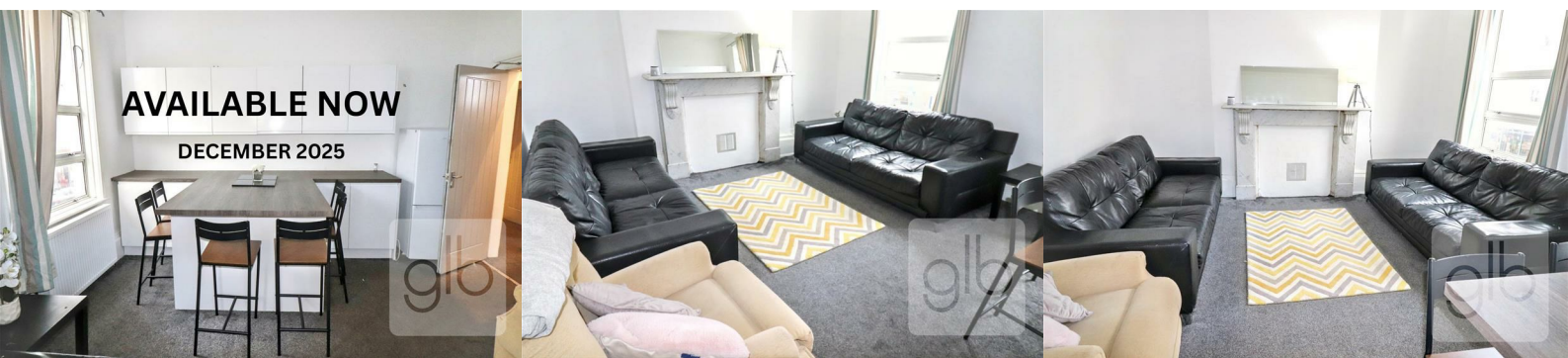
Available NOW

6 Bedroom HMO Available In The Heart Of Leamington Spa Available Immediately -Fantastic Location For Local Amenities, Suitable For Groups Of Professionals & Students.

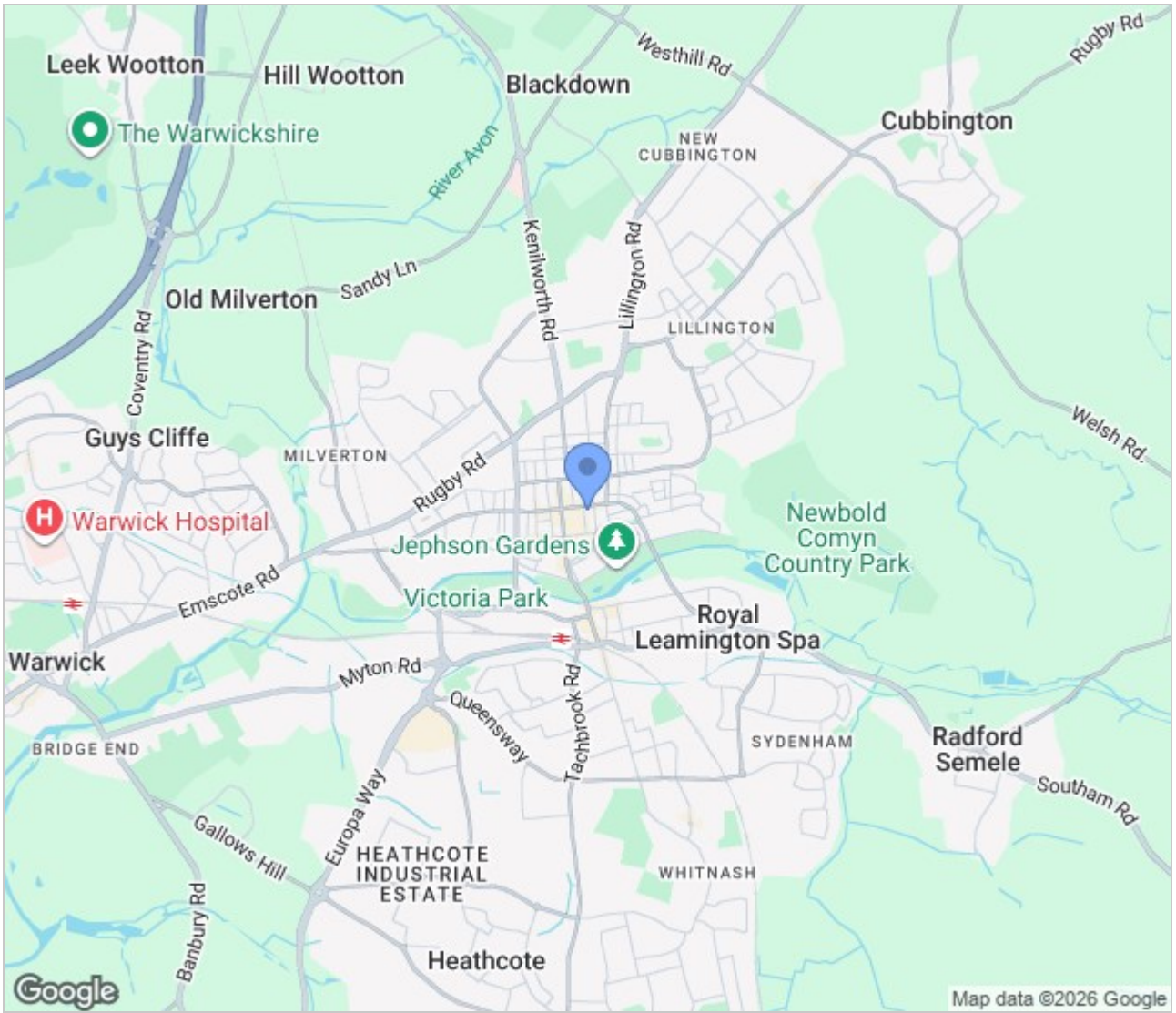
The Property Briefly Comprises Of The Following,

- * Spacious Open Plan Lounge/Dining Area
- * Kitchen Including All Necessary Appliances
- * 3 Bathrooms
- * 6 Bedrooms
- * Fully Furnished

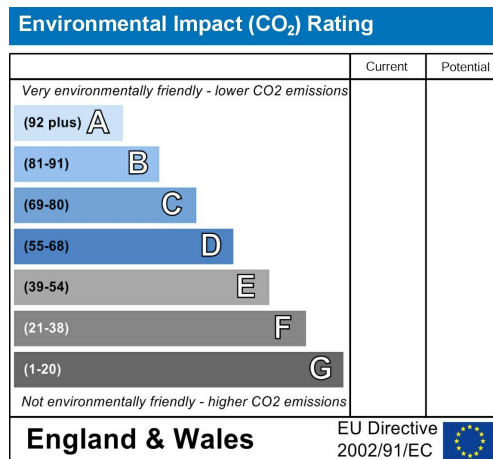
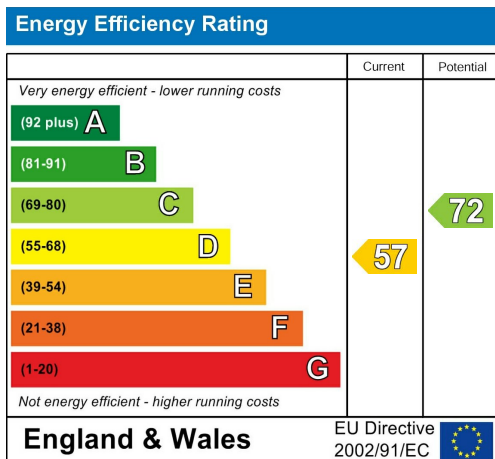
AVAILABLE IMMEDIATELY



Area Map



Energy Efficiency Graph



These particulars, whilst believed to be accurate are set out as a general outline only for guidance and do not constitute any part of an offer or contract. Intending purchasers should not rely on them as statements of representation of fact, but must satisfy themselves by inspection or otherwise as to their accuracy. No person in this firm's employment has the authority to make or give any representation or warranty in respect of the property.