



4 Westmorland House Lake Road, Bowness-On-Windermere

Offers in Region of £115,000



4 Westmorland House Lake Road

Bowness-On-Windermere

Situated in a prime central location, this delightful first-floor apartment presents an excellent opportunity for first-time buyers or investors alike. Boasting a bright open-plan living room with charming bay windows that overlook the bustling street below, this property offers a welcoming ambience throughout. The accommodation comprises a well-proportioned double bedroom complete with a convenient en-suite bathroom, providing comfort and privacy. Residents can benefit from on-street parking facilities, ensuring convenience for those with vehicles, while easy access to local amenities and transport services further enhance the appeal of this property. With road links to the M6 Motorway and the picturesque Lake District National Park, residents can enjoy seamless connectivity to both urban and natural attractions, while the stunning views of the nearby Lakeland fells add a touch of tranquillity to this property.

Whether you are seeking a comfortable and well-connected home in the heart of the city or a lucrative investment opportunity with potential for growth, this one-bedroom flat ticks all the boxes. Don't miss the chance to own a slice of this vibrant urban landscape, with the added benefit of scenic views and convenient amenities just a stone's throw away. Book your viewing today to secure your place in this sought-after locale and embrace the best of city living with a touch of natural beauty on your doorstep.

Local occupancy conditions apply.

- First floor apartment
- Views out to the Lakeland fells
- An open plan living room with bay windows looking out to the front
- Fantastic central location
- One double bedroom with en-suite bathroom
- Easy access to all amenities and local transport services
- On street parking for residents
- Cooker and dishwasher included with sale
- Road links to the M6 Motorway and the Lake District National Park
- Local occupancy conditions apply

IDENTIFICATION CHECKS

Should a purchaser(s) have an offer accepted on a property marketed by THW Estate Agents they will need to undertake an identification check. This is done to meet our obligation under Anti Money Laundering Regulations (AML) and is a legal requirement. We use a specialist third party service to verify your identity. The cost of these checks is £43.20 inc. VAT per buyer, which is paid in advance, when an offer is agreed and prior to a sales memorandum being issued. This charge is non-refundable.

EPC RATING D

SERVICES

Mains electric, mains water, mains drainage

COUNCIL TAX:CURRENTLY BAND A

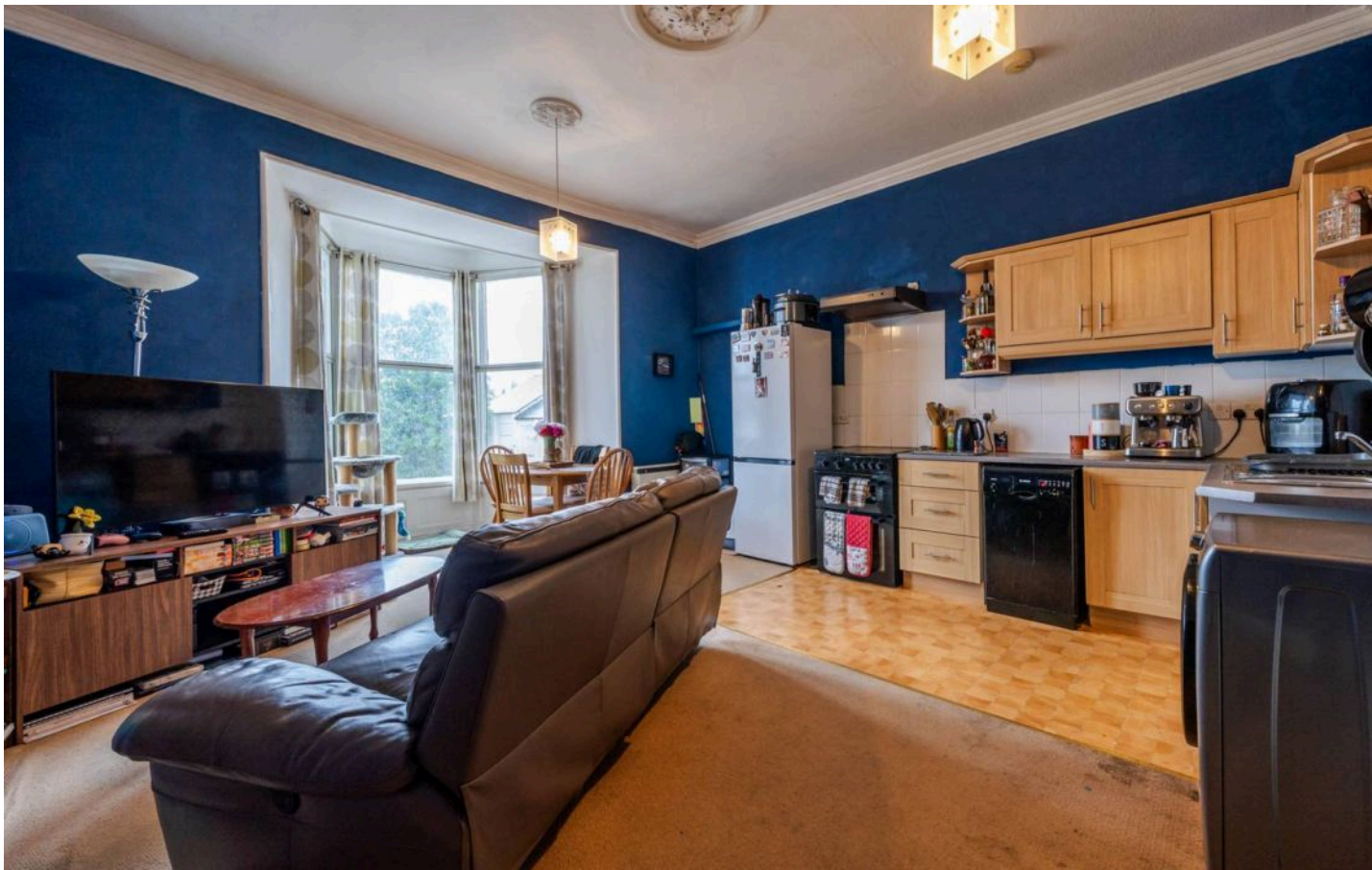
TENURE:LEASEHOLD

DIRECTIONS

From our Windermere office proceed down New Road, which continues along Lake Road from Windermere to Bowness. Westmorland House is located on the left hand side of the road.

WHAT3WORDS:///dorms.shunts.adjusted





FIRST FLOOR

ENTRANCE HALL

6' 1" x 2' 11" (1.86m x 0.90m)

OPEN PLAN LIVING ROOM

20' 0" x 15' 1" (6.10m x 4.60m)

BEDROOM

12' 1" x 11' 10" (3.68m x 3.61m)

BATHROOM

8' 10" x 3' 11" (2.69m x 1.19m)









SippingFox®

The Lake District Drinks Company

THE LAKE DISTRICT
BANSTEE PIE
MOANSBINE

URBAN FOOD HOUSE

A.P. CAR VALETING
Automotive Detailing

STEAK HOUSE
1910
2 x 100000 LBS
BEEF
BONE
BONE
BONE



Approximate total area⁽¹⁾

440 ft²

40.9 m²

(1) Excluding balconies and terraces

While every attempt has been made to ensure accuracy, all measurements are approximate, not to scale. This floor plan is for illustrative purposes only.

Calculations are based on RICS IPMS 3C standard.

GIRAFFE360

THW Estate Agents

25b Crescent Road, Windermere - LA23 1BJ

015394 47825 • windermere@thwestateagents.co.uk • www.thwestateagents.co.uk

Please note that descriptions, photographs and plans are for guidance only. Services and appliances have not been tested, measurements are approximate and alterations may not have necessary consents. Contact us for property availability and important details before travelling or viewing properties. THW Estate Agents Ltd is a separate legal entity to the solicitor firm of THW Legal Ltd which has different ownership and clients of THW Estate Agents Ltd do not have the same protection as those of THW Legal Ltd.