

Hay Close, Summerfield Village



£160,000





Built by Avant Homes and situated in this modern, and very popular Summerfield Village development, this especially impressive two bedroom semi detached property certainly merits closer inspection.

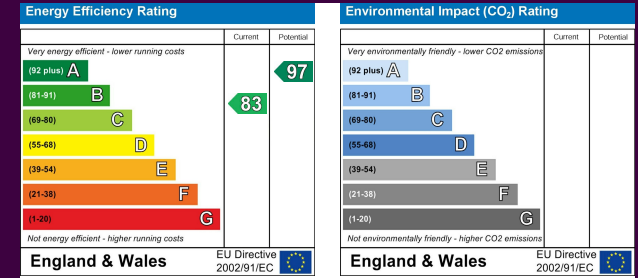
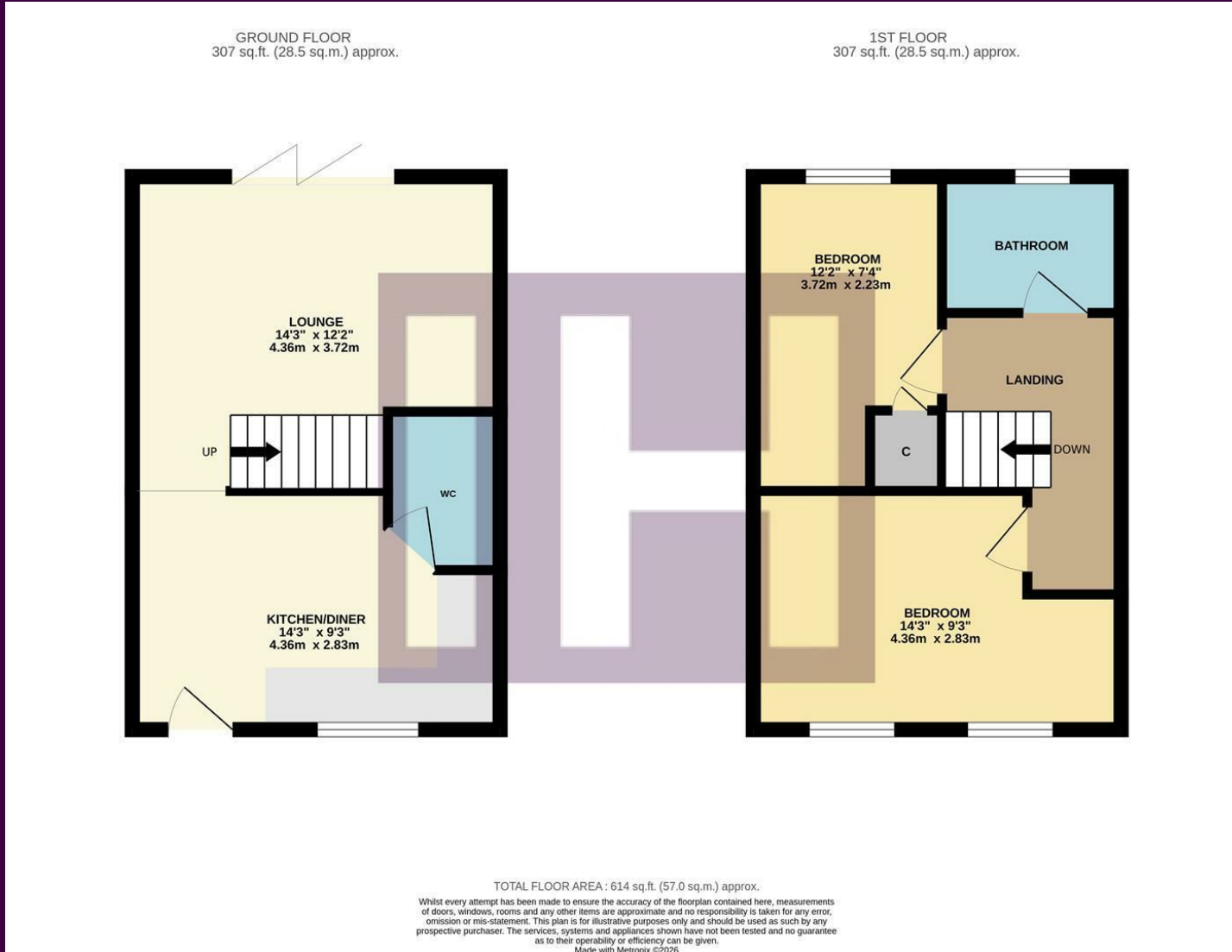
Enjoying a surprisingly generous plot, with large rear garden, side drive and open front outlook, this is a property that may prove to be of particular interest to the first time buyer.

Stylishly delivered, and modern the internal accommodation comprises a smart kitchen/diner, cloakroom/WC and open-plan lounge with feature, bi-fold doors to the garden.

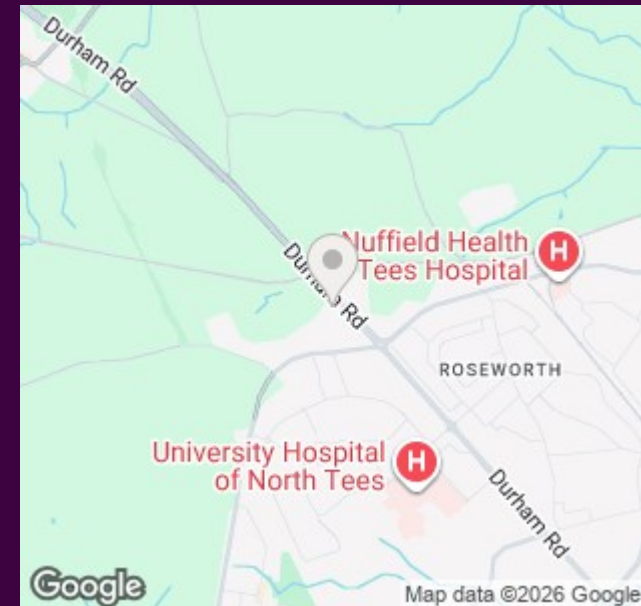


The first floor brings two good bedrooms, and the stylish family bathroom. The front drive allows off-road parking, whilst the rear garden is generous, laid mainly to lawn, fully fence enclosed with near-end patio.

The Layout



The Location



Council Tax Band:

B

Tenure:

Freehold

- Impressive 'Avant' built two-bedroom property
- Contemporary open-plan ground floor living
- Favoured modern development
- Selling as part of a Taylor Wimpey Part Exchange scheme - offers invited
- Stylish kitchen and family bathroom
- Front drive, and generous rear garden