



Guide Price
£290,000

Freehold

3x  1x  1x 

Williamson Road, Lydd
On Sea, Kent, TN29

OVER 60?

Secure this property
for up to **59% less!**

Wards
Helping you move forwards



Main features

- Detached home requiring DIY skills to update
- No onward chain to allow for a quick sale to proceed
- Spacious and bright accommodation
- Walking distance from local shop and beach
- Short drive to New Romney with its many shops and amenities

Accommodation

GROUND FLOOR

Entrance Hall

Lounge/Diner: 22'9 x 13'4 (6.94m x 4.07m) plus 7'1 x 9'1 (2.16m x 2.77m)

Kitchen: 12'9 x 10'5 (3.89m x 3.18m)

Bedroom 1: 11'9 x 11'8 (3.58m x 3.56m)

Bedroom 2: 11'9 x 9'9 (3.58m x 2.97m)

Bedroom 3: 10'1 x 8'6 (3.08m x 2.59m)

Wet Room

Cloakroom

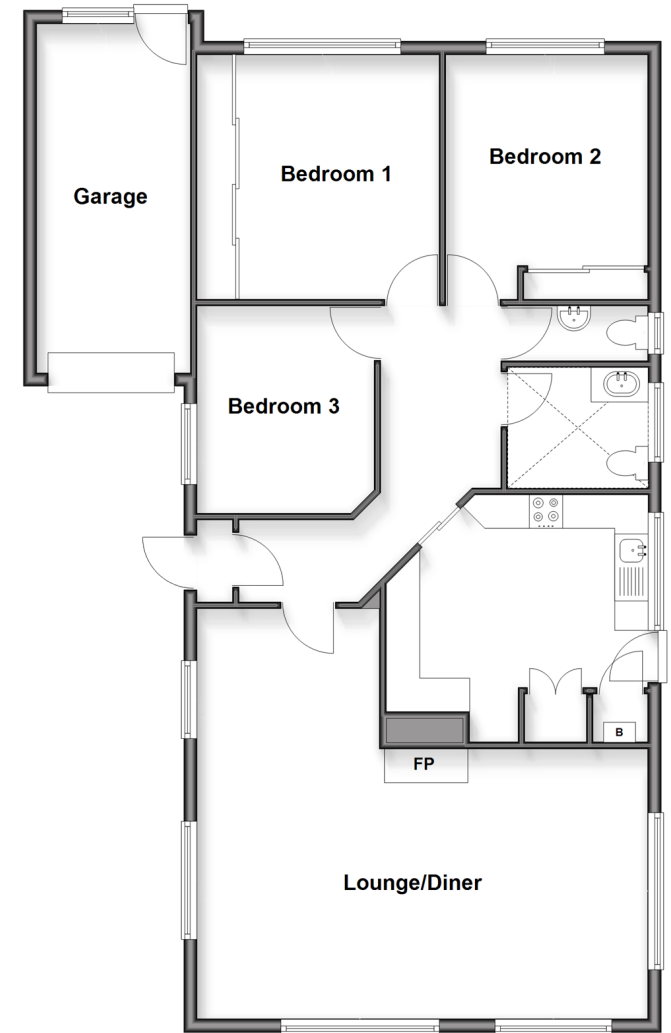
OUTSIDE

Off Road Parking

Garage

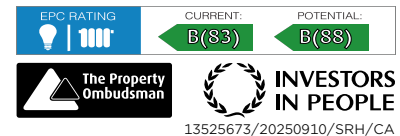
Front & Rear Gardens

Ground Floor
Approx. 109.8 sq. metres (1181.9 sq. feet)



Call New Romney - 01797 363745 ■ wardsofkent.co.uk

- A private rental licensing scheme applies to some properties in this area, please contact us before proceeding
- Legal advice should be taken to verify fixtures/fittings, planning, alterations and/or lease details
- Appliances & services are untested, dimensions are approximate and floor plans are not to scale
- Through a Homewise Home For Life Plan people aged 60+ can secure this property for up to 50% less, by purchasing a Lifetime Lease.



13525673/20250910/SRH/CA