



61 Dartmouth Walk, Basingstoke - RG22 6QX

£320,000 Freehold

Three/four-bedroom end-of-terrace home • EPC - D • Council Tax - C • Conservatory • Communal Paving •
Landscaped rear garden • Downstairs WC and shower room • Family bathroom

01256 321777

www.thepropertyexplorer.co.uk

the property
explorer

EXPLORER are delighted to offer this well-appointed three/four-bedroom end-of-terrace home, providing versatile and spacious accommodation ideal for families, first-time buyers or those seeking flexible living space.

Council Tax band: C

Tenure: Freehold

EPC Energy Efficiency Rating: D

EPC Environmental Impact Rating: D



- › Three/four-bedroom end-of-terrace home
- › EPC - D
- › Council Tax - C
- › Conservatory
- › Communal Paking
- › Landscaped rear garden
- › Downstairs WC and shower room
- › Family bathroom

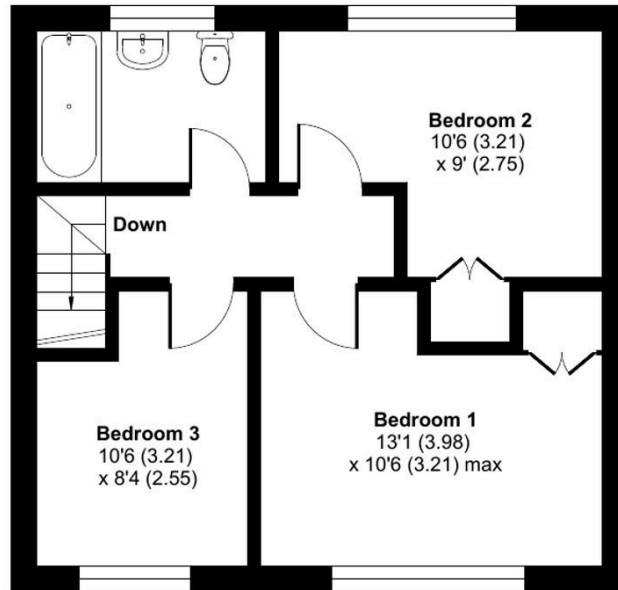




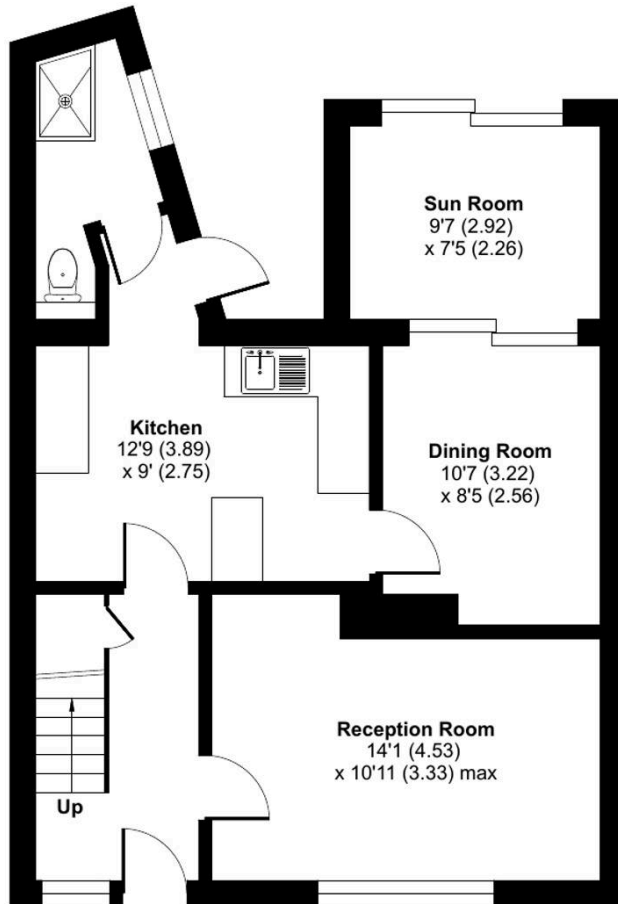
Dartmouth Walk, Basingstoke, RG22

Approximate Area = 1018 sq ft / 94.5 sq m

For identification only - Not to scale



FIRST FLOOR



GROUND FLOOR



Floor plan produced in accordance with RICS Property Measurement 2nd Edition, Incorporating International Property Measurement Standards (IPMS2 Residential). © nchecom 2026. Produced for Property Explorer. REF: 1437689

You can include any text here. The text can be modified upon generating your brochure.