



406 One Park West Kenyons Steps

, Liverpool, L1 3BH

£1,450

Welcome to this charming purpose-built flat located in the desirable area of Kenyons Steps, Liverpool. This modern property, constructed in 2009, offers a spacious living environment with a total area of 861 square feet.

The flat features a well-appointed reception room, perfect for entertaining guests or enjoying a quiet evening at home. With two generously sized bedrooms, this residence is ideal for small families, couples, or professionals seeking a comfortable living space. The property also boasts two bathrooms, providing convenience and privacy for all occupants.

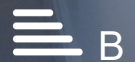
Available for rent at £1,450 per calendar month, this flat represents an excellent opportunity for those looking to settle in a vibrant part of Liverpool. A deposit of £1,673 is required, ensuring peace of mind for both tenants and landlords alike.

This property is available for immediate occupancy, making it a perfect choice for anyone eager to move into their new home without delay. With its modern amenities and prime location, this flat is sure to attract interest. Do not miss the chance to make this lovely property your new home. Available July.

- Two Bedroom Room
- 4th Floor Apartment
- Two Bathrooms
- Furnished
- Available Now
- Council Tax Band C

Viewing

Please contact our Michael Moon Office on 0151 924 1000 if you wish to arrange a viewing appointment for this property or require further information.



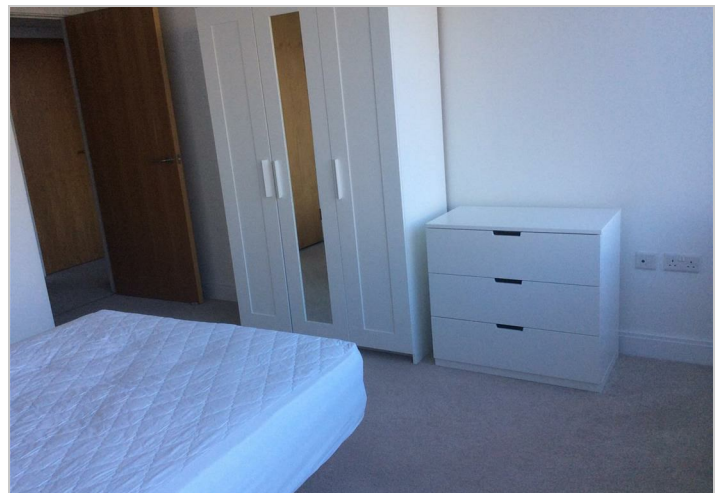
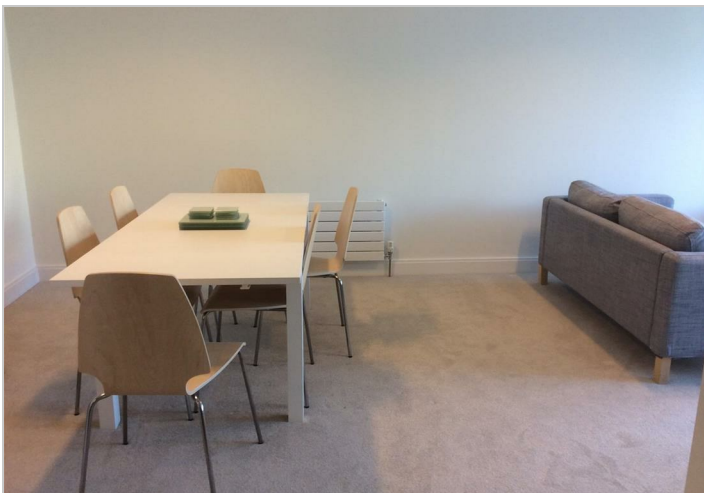
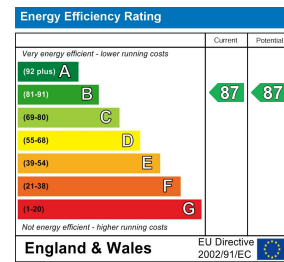
Floor Plan



Area Map



Energy Efficiency Graph



These particulars, whilst believed to be accurate are set out as a general outline only for guidance and do not constitute any part of an offer or contract. Intending purchasers should not rely on them as statements of representation of fact, but must satisfy themselves by inspection or otherwise as to their accuracy. No person in this firm's employment has the authority to make or give any representation or warranty in respect of the property.