



# Warwick Avenue

Little Venice, W9

Asking Price £900,000

A stunning two bedroom apartment finished to a spectacular standard throughout positioned on the first floor of this impressive stucco fronted regency style building.

With an abundance of natural light and wonderfully high ceilings the accommodation comprises of reception room with a fantastic bay window with open views up Warwick Avenue and Formosa Street, a contemporary fully fitted kitchen, a gargantuan master bedroom with plentiful storage and open views over gardens, a further double bedroom and a family bathroom.

This property is located within close proximity of Warwick Avenue underground station and the amenities of Formosa Street and Clifton Road.

**CHESTERTONS**



# Warwick Avenue

Little Venice, W9

- A stunning first floor 2 bedroom apartment.
- Benefitting from high ceilings and plentiful natural light throughout.
- The apartment comes with a share in the freehold and exceptionally long underlying lease.
- Positioned in central Little Venice close to Warwick Avenue underground and Paddington Station.



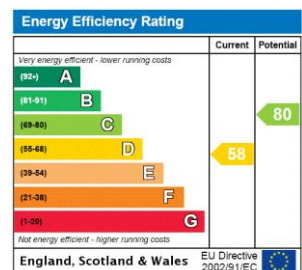
**Tenure:** Share of Freehold 973 years 5 months

**Service Charge:** £4290.13

**Ground Rent:** £0

**Local Authority:** City Of Westminster (4167)

**Council Tax Band:** F



### *Chestertons Little Venice Sales*

26 Clifton Road

Maida Vale

London

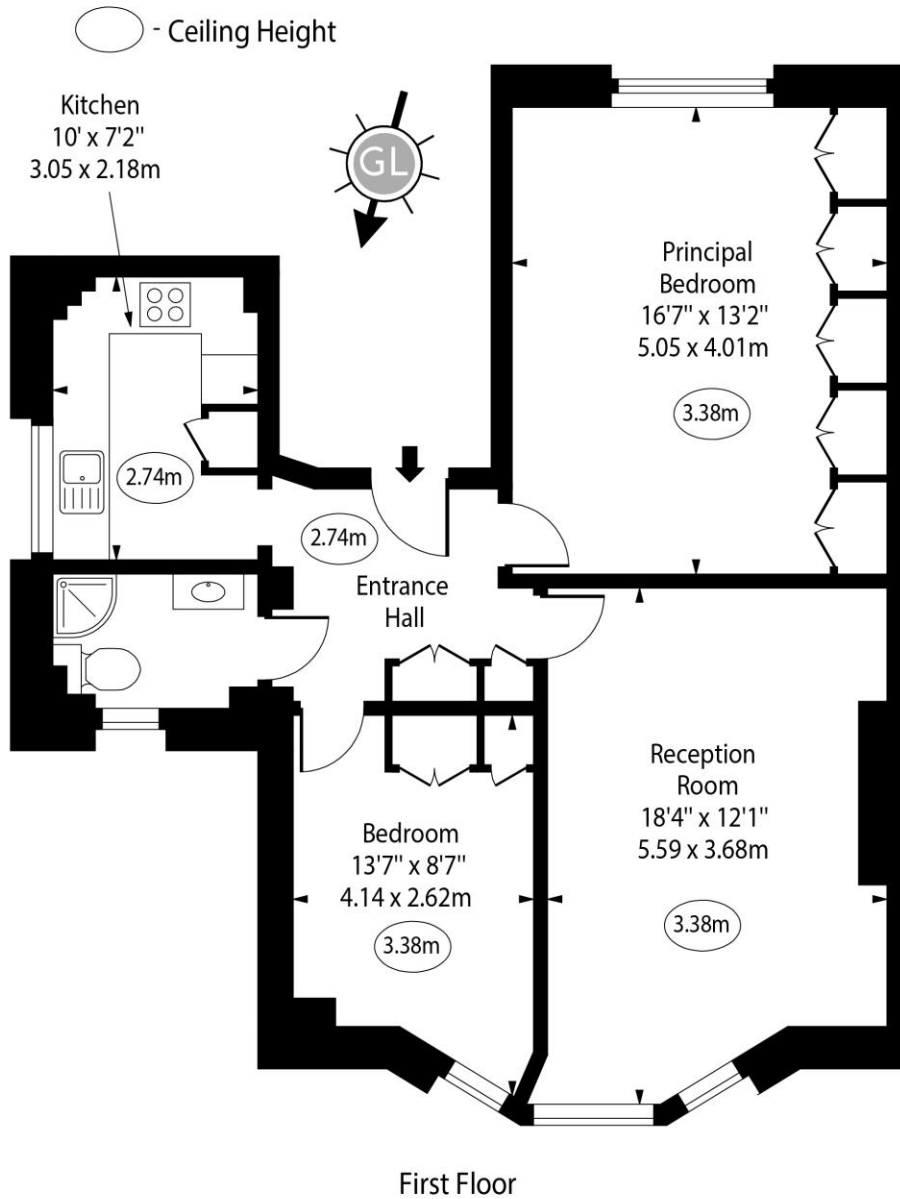
W9 1SX

littlevenice@chestertons.co.uk

020 7286 4632

chestertons.co.uk

# Warwick Avenue, W9



Approx Gross Internal Area 723 Sq Ft - 67.17 Sq M

Every attempt has been made to ensure the accuracy of the floor plan shown. However, all measurements, fixtures, fittings, and data shown are approximate interpretations and for illustrative purposes only. Measured according to the RICS. Not To Scale.

[www.goldlens.co.uk](http://www.goldlens.co.uk)

Ref. No. 030875K

