



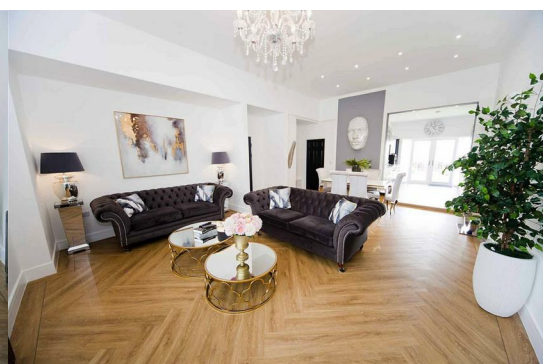
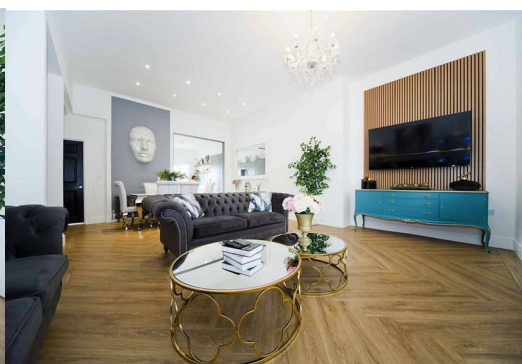
## 31 High Street

Greatham, Hartlepool, TS25 2EN

**£295,000**



Igomove take pleasure in listing this rare to the market three bedroom semi-detached property in a village setting, this highly desirable location offers independent retailers and a village pub and this delightful, unique property provides an abundance of desirable attributes such as; three delightful double bedrooms (master with stylish ensuite facilities), stunning family bathroom, impeccably presented and spacious lounge/diner, newly fitted shaker style kitchen, study, beautiful guest cloakroom, impressive entrance hallway, UPVC triple glazing, gas central heating, traditional style radiators, impeccable decor throughout, stylish flooring, fitted blinds, low maintenance rear garden, large balcony, off street parking, freehold.



Excellent village position in the heart of the High Street, attractive traditional frontage, front door with canopy over into;

Beautiful entrance hallway with stairs to the first floor accommodation and fitted storage cupboard, bespoke wall panelling, stunning flooring.

Guest cloakroom comprising close coupled WC and vanity wash basin combination unit, stylish bespoke wall panelling, tasteful decor, beautiful flooring, recessed spotlights.

Fabulous capacious lounge/diner with window to the front elevation, recessed spotlights, impeccable decor, feature panelling, stylish flooring.

Newly fitted kitchen featuring shaker style larder, wall, base, and drawer cabinetry, complementary surfaces, coordinating backsplash, integrated oven, integrated gas hob, integrated extractor, sink with chrome mixer tap, integrated refrigerator freezer, recessed spotlights, French doors which open to the large rear balcony.

Home office with rear elevation window, pristine decor, stylish flooring.

Cellar ideal for storage.

To the generous first floor landing there is a fitted storage cupboard, stylish bespoke wall panelling, beautiful decor.

Master double bedroom located to the front of the property with delightful decor, benefiting from a walk-in dressing room and with access to;

Huge en suite shower room comprising oversized shower enclosure, concealed cistern WC and vanity washbasin combination unit, recessed spotlights, beautiful marble tiling to floor and contemporary wall panels.

Bedroom two is a good size double situated to the rear, pristine decor.

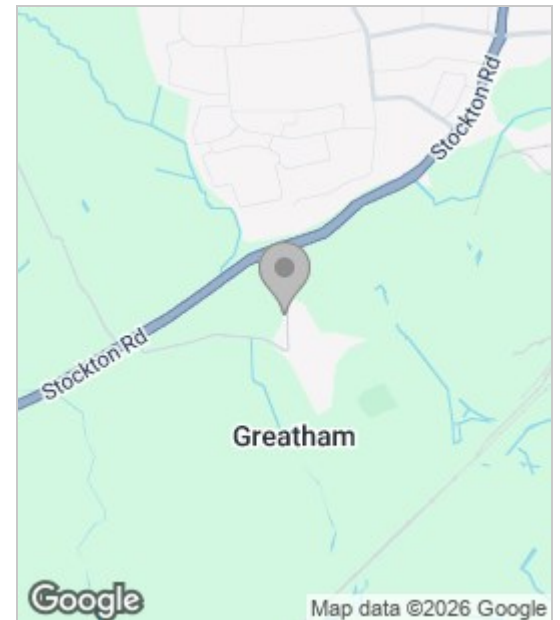
Bedroom three is also a well proportioned double with rear elevation window, immaculate decor.

Stunning family bathroom with custom wall panelling, traditional roll top, claw foot, freestanding bath with Victorian style telephone mixer shower tap, close coupled WC and pedestal wash basin, recessed spotlights, tiled floor.

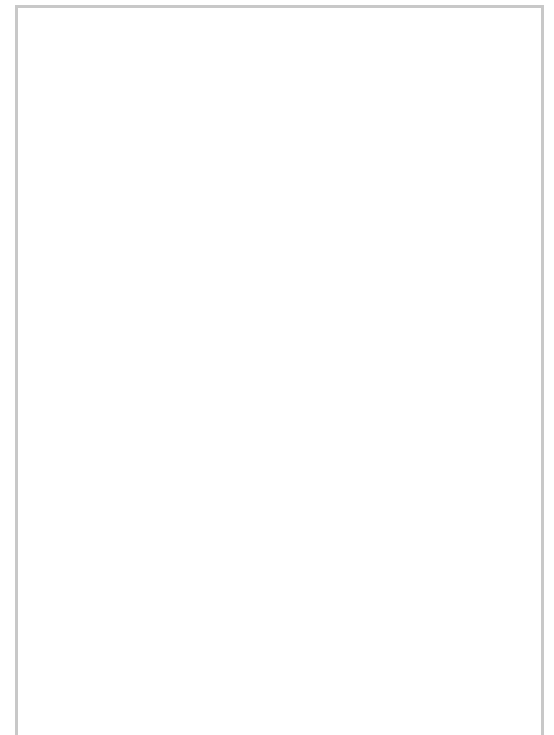
To the rear of the property is an enclosed good size low maintenance landscaped shingled garden with patio and raised well planted beds overlooked from the rear first floor terrace with stairs which lead down to the garden.

Finished to exacting standards, and with an enviable central village location but with outstanding countryside views, homes of this calibre in this location rarely become available to the open market, contact the Igomove team in the first instance to arrange your viewing of this exceptional abode.

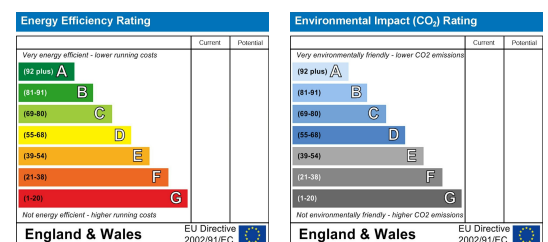
## Area Map



## Floor Plan



## Energy Efficiency Graph



These particulars, whilst believed to be accurate are set out as a general outline only for guidance and do not constitute any part of an offer or contract. Intending purchasers should not rely on them as statements of representation of fact, but must satisfy themselves by inspection or otherwise as to their accuracy. No person in this firm's employment has the authority to make or give any representation or warranty in respect of the property.