



BREENS

Kempe Road

Enfield · EN1

£469,995

FREEHOLD



BREENS

THE HOME

Kempe Road

Enfield · EN1

KEY FEATURES

- Chain-Free
- Living Reception Room
- Kitchen/Dining Room
- Ground Floor Cloakroom/WC
- First Floor Bathroom
- Rear Garden of Approx. 80FT
- Front Off-Street Parking
- Three-Bedroom, End-Terrace House
- Located Within Close Proximity to Local Schools and Transport Links into Central London
- Double Glazed with Gas Central Heating

EPC RATING

D

COUNCIL TAX BAND

D

3

BEDROOMS

1

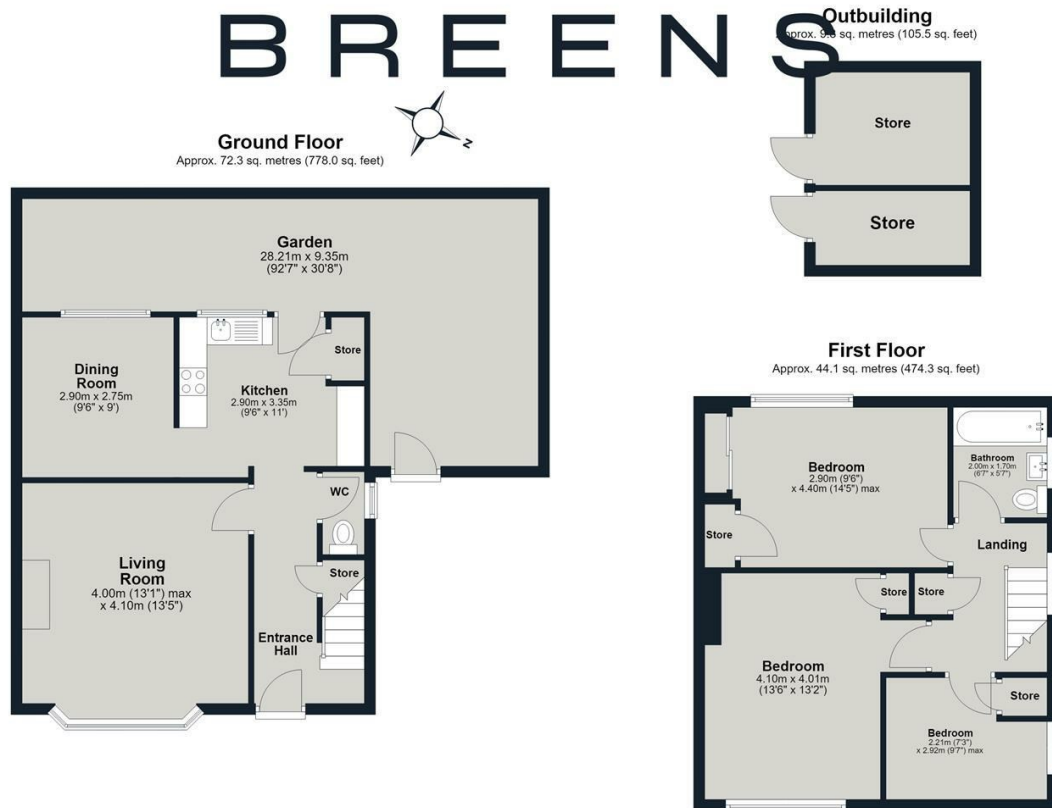
BATHROOMS

2

RECEPTIONS



BREENS



Total area: approx. 126.1 sq. metres (1357.8 sq. feet)
Kempe Road

GET IN TOUCH

020 8804 8989

enfield@breens.property

www.breens.property

VISIT US

557- 559 Hertford Road, Enfield, EN3 5UQ

These particulars are intended as a general guide and are believed to be correct, but their accuracy is not guaranteed and they do not form part of any offer or contract. All measurements are approximate and for guidance only. The Agent has not tested any apparatus, equipment, fixtures, fittings or services and cannot verify they are in working order or fit for purpose. Photographs are for illustration only and may depict items that are not for sale or included in the sale price. References to tenure are based on information supplied by the vendor; the Agent has not seen the title documents, and buyers should obtain verification from their solicitor or surveyor. Under the Money Laundering Regulations 2017, intending purchasers will be asked to produce identification and documentation at a later stage. These particulars are issued on the condition that all negotiations are conducted through Breens Estate Agents. Subject to contract and availability.