

**SW19**

*it's all in the postcode...*



**SW19**

**Boundary Road**

**£375,000**

- Period maisonette
- Sought after location
- Private garden
- No onward chain
- New lease
- Council tax Band B
- EPC Rating C



**SW19**



**SW19**



**SW19**

020 8544 2828

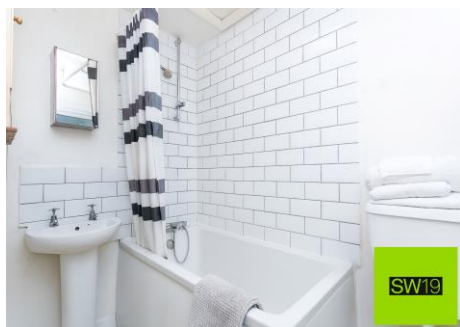
Wimbledon: Wimbledon Park: Colliers Wood

[www.SW19.com](http://www.SW19.com)

SW19 Estate Agents Ltd. Is registered in England & Wales No. 05508737

*it's all in the postcode...*

A charming period maisonette situated on one of Colliers Wood's most sought-after residential roads, just moments from the Northern Line tube station. This well-presented home offers a bright front reception room, along with a generous kitchen/breakfast room to the rear, which opens directly onto a private garden, ideal for both relaxing and entertaining. The property is offered with a new lease and benefits from no onward chain, making it an excellent opportunity for first-time buyers looking to establish themselves in the popular SW19 property mark.

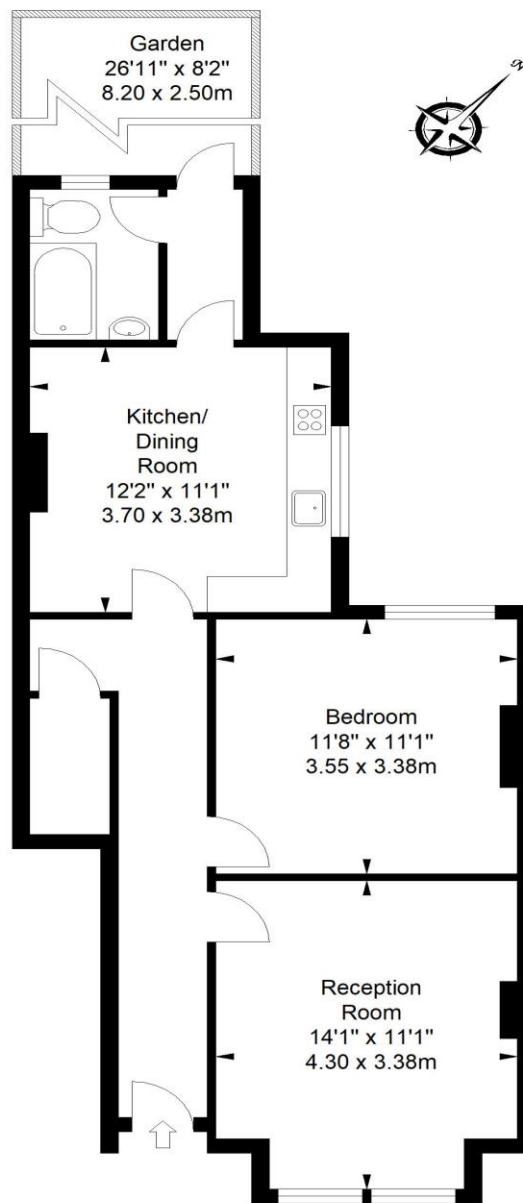


020 8544 2828  
Wimbledon: Wimbledon Park: Colliers Wood  
[www.SW19.com](http://www.SW19.com)  
SW19 Estate Agents Ltd. Is registered in England & Wales No. 05508737

*'it's all in the postcode...'*

## Boundary Road

Approximate Gross Internal Area  
592 sq ft / 55.03 sq m



Ground Floor

ILLUSTRATION FOR IDENTIFICATION PURPOSES ONLY

ALL MEASUREMENTS ARE MAXIMUM, AND INCLUDE WINDOW BAYS AND WARDROBES WHERE APPLICABLE  
THIS PLAN MUST NOT BE REPRODUCED BY ANY OTHER PERSON WITHOUT PERMISSION

SW19

These particulars are for guidance only and should not be relied upon as a statement or representation of fact. All measurements given are approximate only and should not be relied upon for ordering carpets, equipment etc. Purchasers should satisfy themselves by inspection or otherwise as to the accuracy of the statements contained within. Neither SW19 estate agents ltd or related companies or their employees can confirm structural conditions of the property or that any appliances or other facilities are in working order. Purchasers are strongly recommended to arrange their own survey.

020 8544 2828

Wimbledon: Wimbledon Park: Colliers Wood

[www.SW19.com](http://www.SW19.com)

SW19 Estate Agents Ltd. Is registered in England & Wales No. 05508737

*'it's all in the postcode...'*